

Distr.
GENERAL

TRANS/WP.29/GRE/2001/31/Add.1
24 January 2002

Original: ENGLISH

ECONOMIC COMMISSION FOR EUROPE

INLAND TRANSPORT COMMITTEE

World Forum for Harmonisation of Vehicle Regulations (WP.29)

Working Party on Lighting and Light-Signalling (GRE)

(Forty-eighth session, 9-12 April 2002,
agenda item 1.3.)

PROPOSAL FOR DRAFT AMENDMENTS TO REGULATION No. 48

(Installation of lighting and light-signalling devices)

Addendum 1

Transmitted by the Expert from the Working Party "Brussels 1952" (GTB)

Note: The text reproduced below was prepared by the expert from GTB, following the consideration of the original proposal by GRE, during its forty-seventh session (TRANS/WP.29/GRE/47, paras. 20-23). GTB examined the questions and suggestions made, and proposes in this document the improvements regarding definitions only.

Note: This document is distributed to the Experts on lighting and light-signalling only.

GE.02-20436

A. PROPOSAL

The original proposal (TRANS/WP.29/GRE/2001/31) was:

- 2.7. "Lamp" means a device designed to illuminate the road or to emit a light signal to other road users. **Lighting units of adaptive front lighting systems**, rear registration plate lamps and retro-reflectors are likewise to be regarded as lamps;

New proposal is:

Delete the amendment. This should be taken up when inserting the provisions concerning the AFS.

The original proposal (TRANS/WP.29/GRE/2001/31) was:

- 2.7.1.1.1. "Replaceable light source" means a light source which can be inserted in and removed from the holder of its device without tool;
- 2.7.1.1.2. "Non-replaceable light source" means a light source which cannot be removed from its device without damaging the device;
- in case of a light source module: a light source which cannot be removed from its light source module without damaging the light source module.

New proposal is:

- "2.7.1.1.1. "Replaceable light source" means a light source which **is designed** to be inserted in and removed from the holder of its device without tool;
- 2.7.1.1.2. "Non-replaceable light source" means a light source **which can only be replaced by replacement of the device to which this light source is fixed**;
- in case of a light source module: a light source **which can only be replaced by replacement of the light source module to which this light source is fixed.**"
-

The original proposal (TRANS/WP.29/GRE/2001/31) was:

2.7.1.1.5. "Gas-discharge light source" means a light source where the element for optical radiation is a discharge arc producing electro-luminescence / fluorescence;

New proposal is:

The proposal shall not be changed. Do not take out 'fluorescence'; the definition is correct.

The original proposal (TRANS/WP.29/GRE/2001/31) was:

2.7.1.1.7. "Electro-luminescence plate" means a light source where the element for optical radiation is an active layer producing electro-luminescence;

New proposal is:

Delete the proposal and re-submit it as soon as the requirements would be defined.

The original proposal (TRANS/WP.29/GRE/2001/31) was:

The "Annex for clarification" was intended for the GRE document only.

New proposal is:

Insert new annex 10 and add a footnote referring to it to paragraphs 2.7.1. and 2.7.27., to read as follows:

"2.7.1. Light source */

.....

2.7.27. "Distributed lighting system" or "distributed light-signalling system" (DLS).means a lamp or lamp system comprising a light-generator, light guide(s) and outer lens(es). */

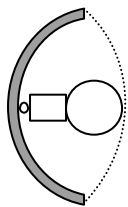
*/ **For clarification see annex 10"**

Insert new annex 10, to read:

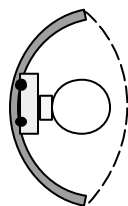
"Annex 10

EXAMPLES OF LIGHT SOURCE OPTIONS

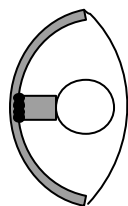
"Standard"



Light Source:
Replaceable
Approved to Regulations

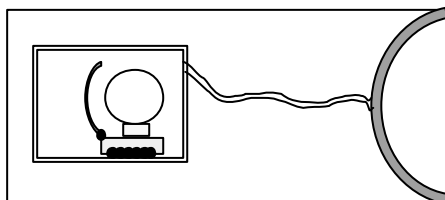
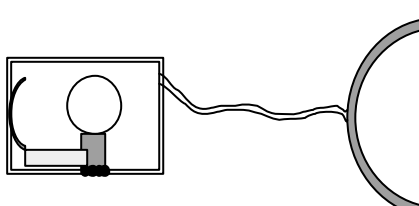
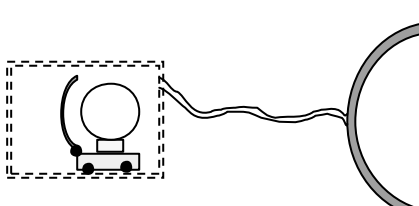
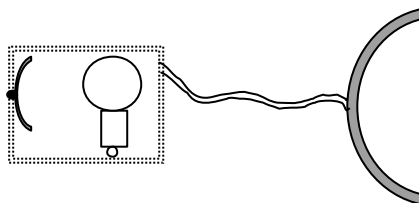


LIGHT SOURCE MODULE
Light Source:
Non-replaceable
Non-approved



SEALED
Light Source:
Non-replaceable
Non-approved

DLS



* * *

B. JUSTIFICATION

The above proposal improves the definitions concerned.
It was prepared in response to the first consideration by GRE of
document TRANS/WP.29/GRE/2001/31.
