

# WP.15/AC.2/13/INF.4

---

**ECONOMIC COMMISSION FOR EUROPE**

**INLAND TRANSPORT COMMITTEE**

Working Party on the Transport of Dangerous Goods  
Joint Meeting of Experts on the Regulations annexed to the  
European Agreement concerning the International Carriage  
of Dangerous Goods by Inland Waterways (ADN)

Thirteenth session  
Geneva, 17-18 June 2008  
Agenda item 4

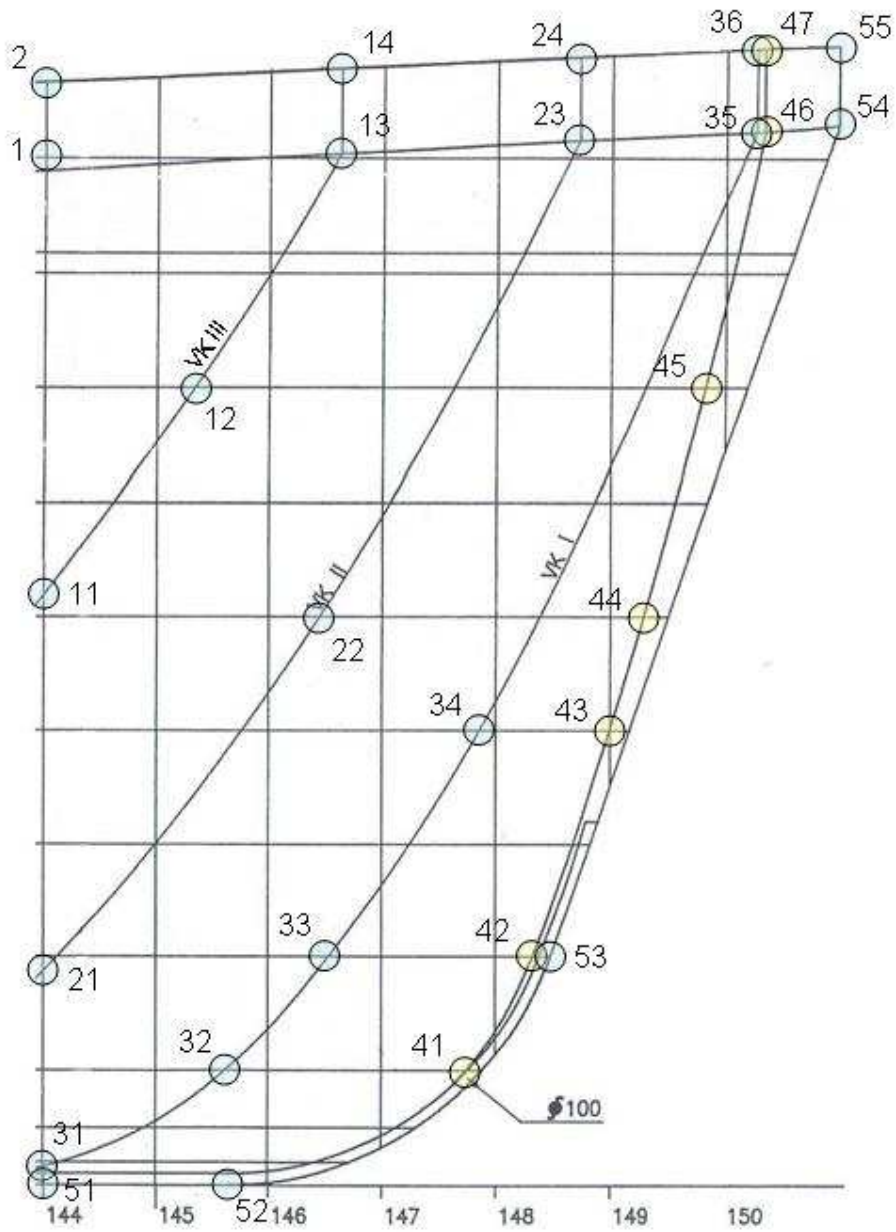
## **ADDITIONAL INFORMATION FOR ECE/TRANS/WP.15/AC.2/2008/7/REV.1 ON ALTERNATIVE TANK CONSTRUCTIONS**

**Transmitted by the Netherlands**

Figures and tables which should go into section 9.3.4.4.7 drawings.

**V-bow**

Shape shall be taken as shown in the figure below.

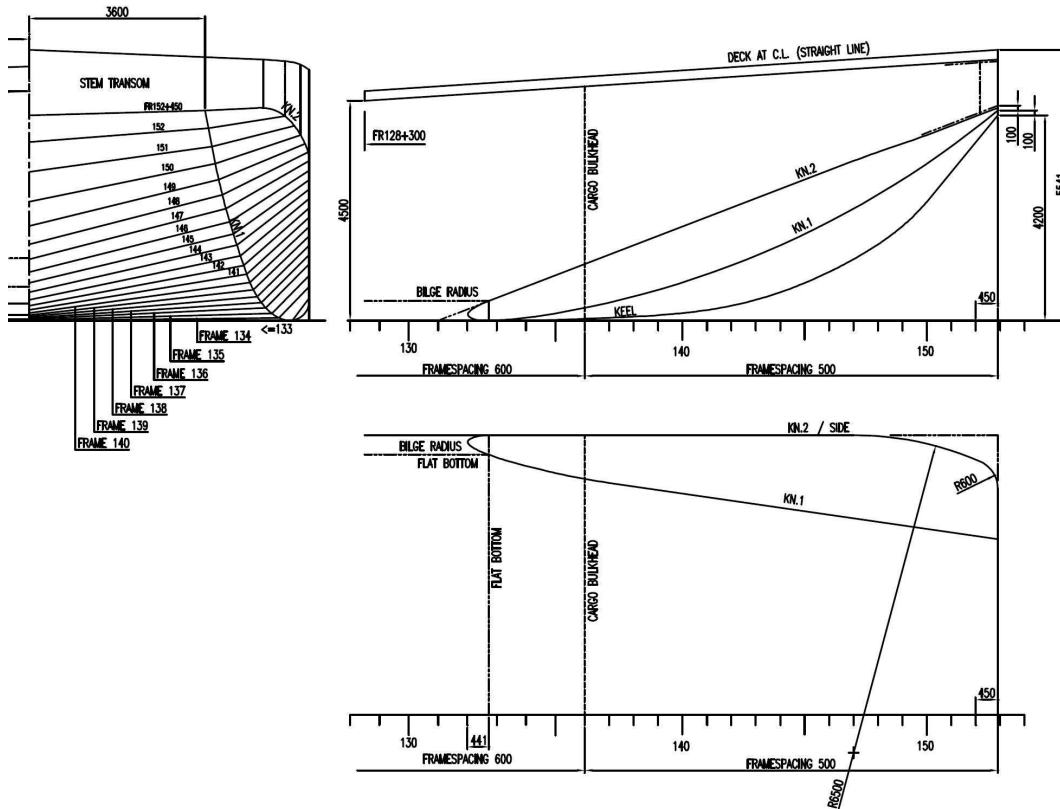


Characteristic dimension shall be taken from the table below.

reference number	x	y	z
1	0.000	3.923	4.459
2	0.000	3.923	4.852
11	0.000	3.000	2.596
12	0.652	3.000	3.507
13	1.296	3.000	4.535
14	1.296	3.000	4.910
21	0.000	2.000	0.947
22	1.197	2.000	2.498
23	2.346	2.000	4.589
24	2.346	2.000	4.955
31	0.000	1.000	0.085
32	0.420	1.000	0.255
33	0.777	1.000	0.509
34	1.894	1.000	1.997
35	3.123	1.000	4.624
36	3.123	1.000	4.986
41	1.765	0.053	0.424
42	2.131	0.120	1.005
43	2.471	0.272	1.997
44	2.618	0.357	2.493
45	2.895	0.588	3.503
46	3.159	0.949	4.629
47	3.159	0.949	4.991
51	0.000	0.000	0.000
52	0.795	0.000	0.000
53	2.212	0.000	1.005
54	3.481	0.000	4.651
55	3.485	0.000	5.004

**Push barge bow**

Bow to be modelled from frame 145 to fwd transom.  
 The shape shall be as shown in the figure below.



Characteristic dimension shall be taken from the table below.

fr	half breadths			heights			
	knuckle 1	knuckle 2	deck	stem	knuckle 1	knuckle 2	deck
145	4.173	5.730	5.730	0.769	1.773	2.882	5.084
146	4.100	5.730	5.730	0.993	2.022	3.074	5.116
147	4.028	5.730	5.730	1.255	2.289	3.266	5.149
148	3.955	5.711	5.711	1.559	2.576	3.449	5.181
149	3.883	5.653	5.653	1.932	2.883	3.621	5.214
150	3.810	5.555	5.555	2.435	3.212	3.797	5.246
151	3.738	5.415	5.415	3.043	3.536	3.987	5.278
152	3.665	5.230	5.230	3.652	3.939	4.185	5.315
transom	3.600	4.642	4.642	4.200	4.300	4.351	5.340

-----