

---

# WorldSID 50<sup>th</sup> and 5<sup>th</sup> Update

Z. Jerry Wang, Ph.D.

First Technology Safety Systems, Inc.

February 4, 2010

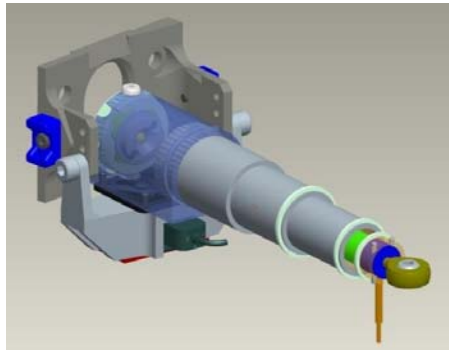
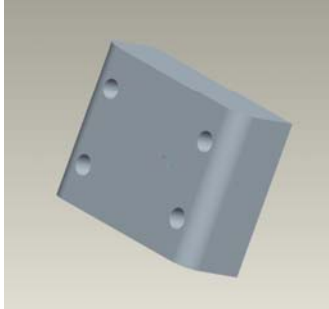
# WorldSID Additional Tests

---

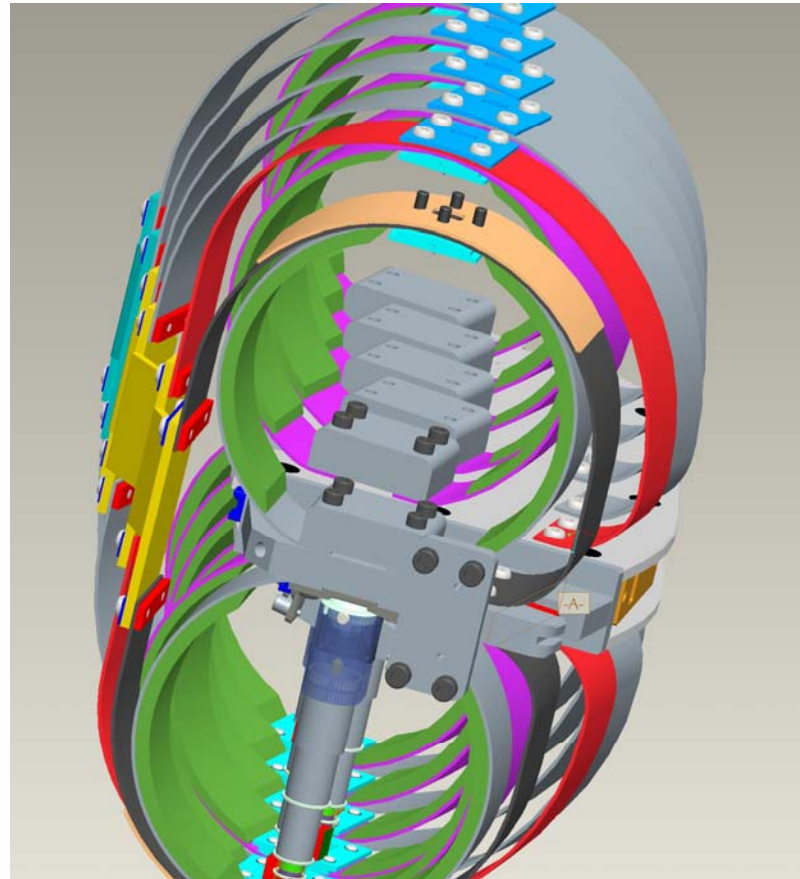
- Autoliv Side Impact Test Programs
- Test Configurations
  - Car to car crash tests.
  - WorldSID 50<sup>th</sup> driver, WorldSID 5<sup>th</sup> rear seat passenger, THOR front seat passenger (far side).
  - 55 KPH, 70 KPH and 80 KPH Speed.
- Instrumentation
  - 2D IR-TRACCs were instrumented for both WSID 50<sup>th</sup> and 5<sup>th</sup>.
  - 2D IRTRACCs were installed on both sides of the rib cages.
- Observations
  - Instrumentation from both sides provide good information for side impact analysis.
  - Injury criteria with 2D IRTRACC needs to be developed.
- Data will be presented by Autoliv when analysis is completed.

# Ballast rib clamp 2D IR-TRACC kit

---



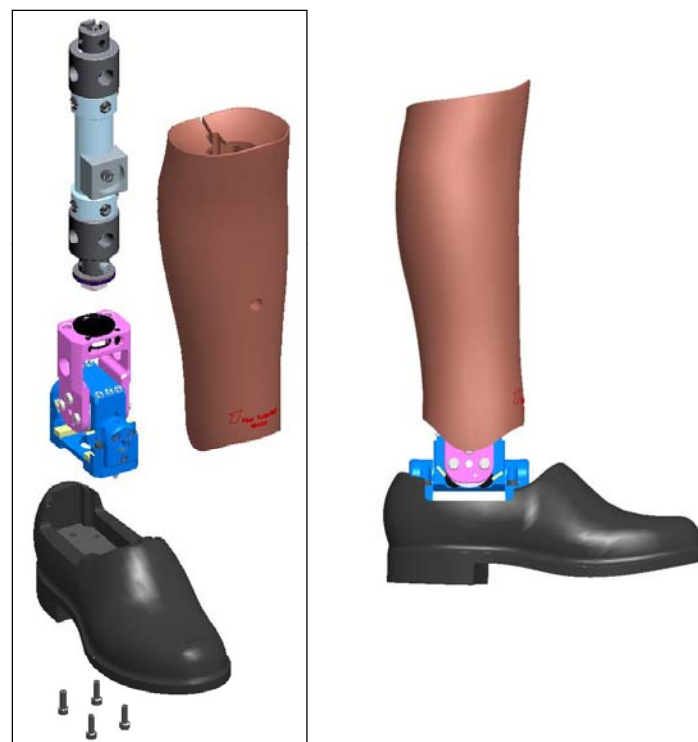
Rib ballast clamp, plated steel  
0.28 kg replaces non struck side  
IRTRACC



# WSID 5<sup>th</sup> Lower Leg Update

---

- Scaled down from the WorldSID 50<sup>th</sup> design
- Machining parts are fabricated.
- Foot mold is due Feb 5<sup>th</sup> for validation.
- Lower leg mold is in the process of fabrication.
- Phase II legs will be delivered with the 1<sup>st</sup> NHTSA dummy. Replacement legs will be delivered with the 2<sup>nd</sup> NHTSA dummy.



# WorldSID 5<sup>th</sup> NHTSA Dummy Delivery

---

- First Dummy will be delivered on Feb 15<sup>th</sup>.
- Second Dummy tentative delivery date April 23<sup>rd</sup>.