



Economic and Social Council

Distr.: General
23 December 2011
English
Original: English and French

Economic Commission for Europe

Inland Transport Committee

World Forum for Harmonization of Vehicle Regulations

One-hundred-and-fifty-third session

Geneva, 8–11 March 2011

Item 4.8.4 of the provisional agenda

1958 Agreement – Consideration of draft amendments to existing Regulations submitted by GRSG

Proposal for Supplement 2 to the 03 series of amendments to Regulation No. 107 (M₂ and M₃ vehicles)

Submitted by the Working Party on General Safety Provisions*

The text reproduced below was adopted by the Working Party on General Safety Provisions (GRSG) at its ninety-ninth session in October 2010 in order to incorporate a 25 mm radius at the base of the gangway gauging device and to prohibit escape hatches fitted in the roof of a vehicle when the use of such hatches may present a danger to passengers. It is based on ECE/TRANS/WP.29/GRSG/2010/27 not amended and ECE/TRANS/WP.29/GRSG/2010/35 not amended. It is submitted to the World Forum for Harmonization of Vehicle Regulations (WP.29) and to the Administrative Committee (AC.1) for consideration (ECE/TRANS/WP.29/GRSG/78 paras. 8 and 16).

* In accordance with the programme of work of the Inland Transport Committee for 2006–2010 (ECE/TRANS/166/Add.1, programme activity 02.4), the World Forum will develop, harmonize and update Regulations in order to enhance the performance of vehicles. The present document is submitted in conformity with that mandate.

Annex 3

Paragraph 7.6.1.11., amend to read:

"7.6.1.11. Escape hatches, additional to the emergency doors and windows, shall be fitted in vehicles of Class II, III and B (in the upper deck roof in the case of double-deck vehicles). Except as provided in paragraph 7.6.1.12., they may also be fitted in the case of Class I and A vehicles. There shall not be any escape hatches fitted in the roof of a trolleybus. The minimum number of hatches shall be:"

Insert a new paragraph 7.6.1.12., to read:

"7.6.1.12. Vehicles of Class I and A shall not have escape hatches fitted where technical components are installed which present possible dangers to passengers using the escape hatches (e.g. high voltage systems, systems containing dangerous liquids and/or gas, etc.)."

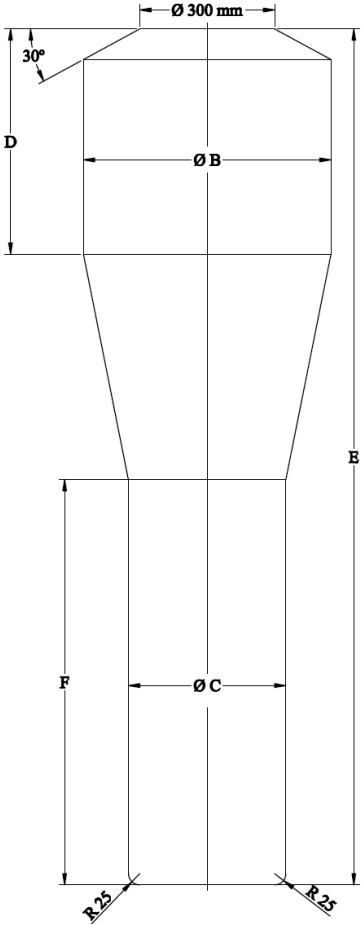
Paragraphs 7.6.1.12. (former) to 7.6.1.15., renumber as paragraphs 7.6.1.13. to 7.6.1.16.

Paragraph 7.6.2.4., amend to read:

"7.6.2.4. At least one exit shall be situated either in the rear face or in the front face of the vehicle respectively. For Class I and A vehicles and for vehicles with a rear part permanently closed off from the passenger compartment, this provision is fulfilled if an escape hatch is fitted, or, if paragraph 7.6.1.12. applies, an additional exit to those specified in paragraph 7.6.1., is fitted on each side of the vehicle. For double-deck vehicles ..."

Annex 4, Figure 6, amend to read:

"Figure 6:
Gangway Mannequin.



"