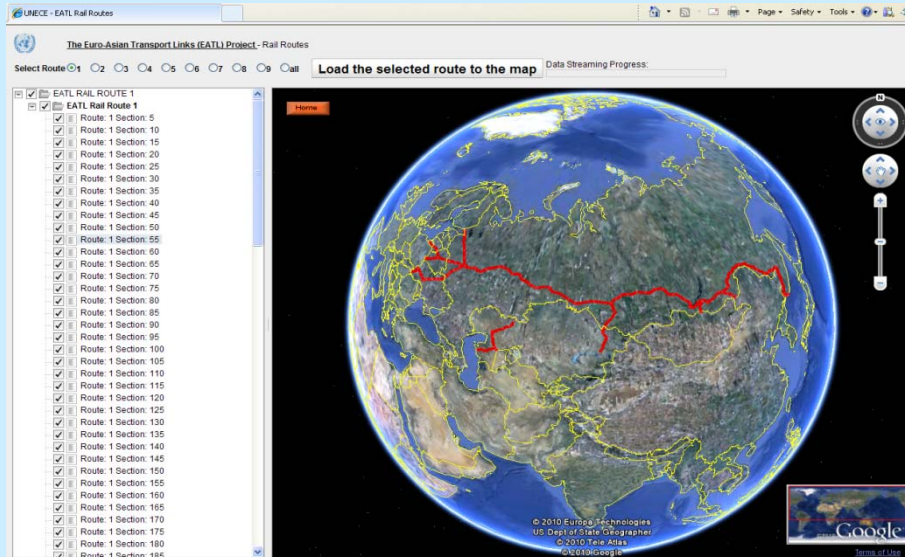




UNITED NATIONS ECONOMIC COMMISSION FOR EUROPE

7th session of the Expert Group on Euro-Asian Transport Linkages



EATL GIS Work and Internet Application

The EATL Phase II
October 2011



GIS work Objectives

EATL Phase II work plan

Expected Accomplishment

Further developed and updated GIS database

Main Activities

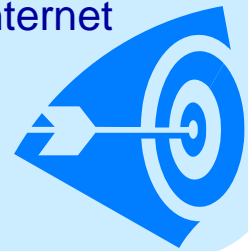
Review, update and extend existing GIS database based on country inputs

Description of Action

Collect country data Subject to quality inputs update database and projects

Secretariat's vision has targeted far beyond

Develop an Internet Application for the presentation of the EATL GIS work in Internet environments for access free to interested users





EATL GIS Status

- GIS MapInfo Professional version 7.5 and EATL Database
- Basic layers & data merged: Provide nodes, line sections, objects situated along sections
- Workspaces and maps designed, to be published on Internet and printed documents
- EATL GIS database and predefined workspaces ready to be delivered



Topics covered by GIS

- Defined rail line sections and routes
- Defined road sections and routes
- Nodes: Cities, rail, road, stations, BCP
- Inland Waterways
- Maritime and inland ports
- Border crossing points
- Rail Projects
- Road Projects



GIS Layers

- Predefined – from official sources
 - Border Shapes
 - Rivers and Lakes
 - Cities (Capitals, Small Cities, Populated places, Build up areas)
 - Railway Lines – all
 - Railway Stations
 - Road by categories
- EATL Specific – Nodes
 - EATL Rail Routes
 - EATL Road Routes
 - EATL Rail Line Sections with associated data
 - EATL Road Line Sections with associated data
 - EATL Rail Projects
 - EATL Road Projects
 - Sea and inland ports
 - Border crossing points



EATL GIS Application based on available Web technologies

ESRI GIS Map Server Online + Silverlight + SharpMap

- Query Web GIS Services from ESRI Online Map Server Online for background layers (images)
- Require Silverlight plug-in installation on end user computer (free)
- Load shape files (ESRI)
- No GIS server needed for EATL GIS Data
- Need a set of libraries to be installed in an Microsoft IIS server of the application publisher (UNECE-EATL)
- Good security level for EATL GIS Data Managed offered
- Designed to view and query Data placed on Map



View and Query Data

- Application allows the following queries:
 - **Point and click** to identify the GIS object
 - **Mouse over** to get the figures of the pointed GIS “object”
 - Query the data of selected layer based on the figure of an attribute
- Three types of backgrounds available to be selected:
 - **Streets view**
 - **Topographic Map**
 - Worldwide **Satellite Imagery Map**
- Implemented tools are:
 - Toggle visibility of the base map switcher
 - Toggle visibility of the overview map
 - Toggle visibility of the magnifying glass
 - Area object select

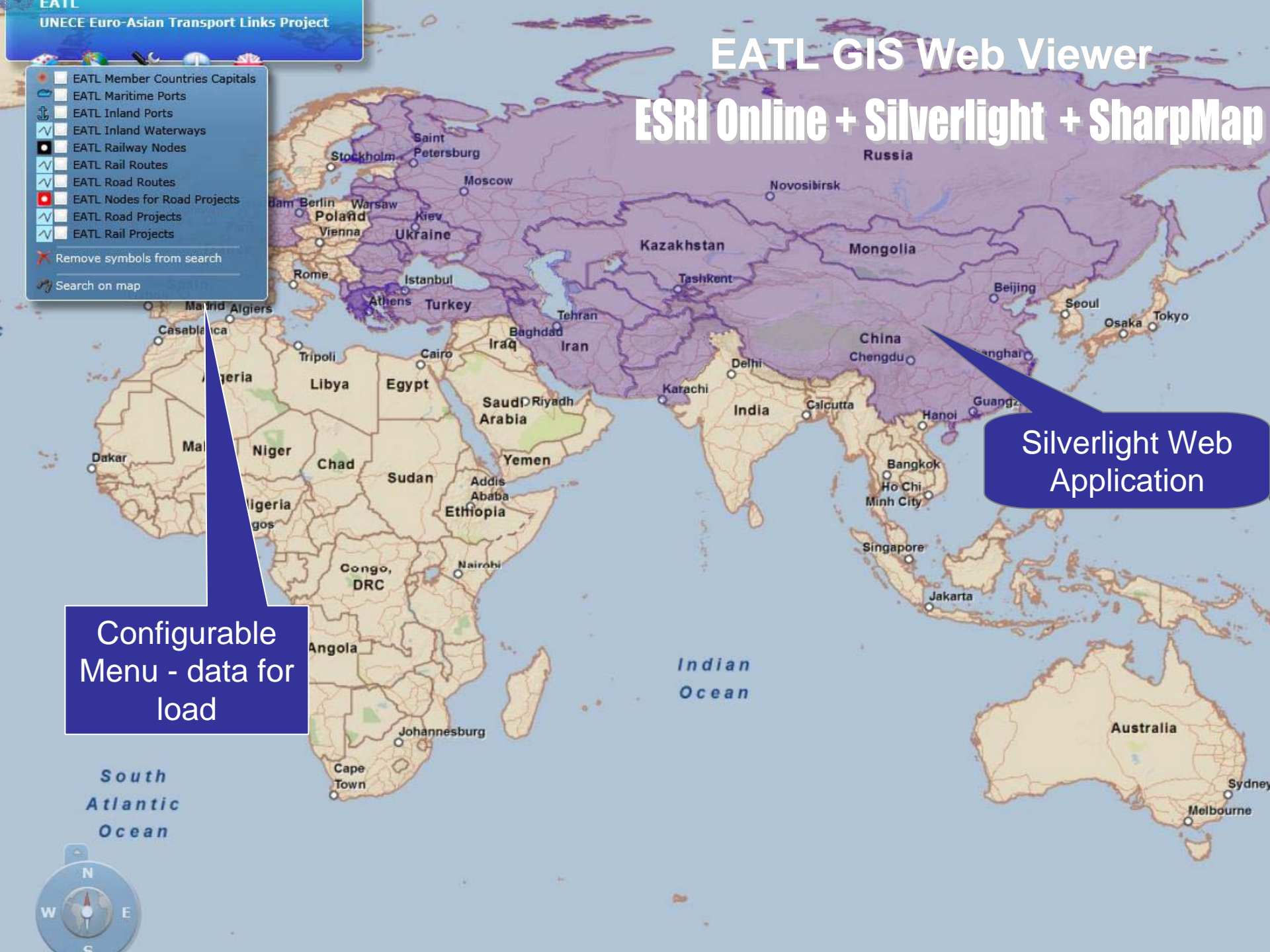
EATL GIS Web Viewer

ESRI Online + Silverlight + SharpMap

- EATL Member Countries Capitals
- EATL Maritime Ports
- EATL Inland Ports
- EATL Inland Waterways
- EATL Railway Nodes
- EATL Rail Routes
- EATL Road Routes
- EATL Nodes for Road Projects
- EATL Road Projects
- EATL Rail Projects
- Remove symbols from search
- Search on map

Silverlight Web Application

Configurable Menu - data for load

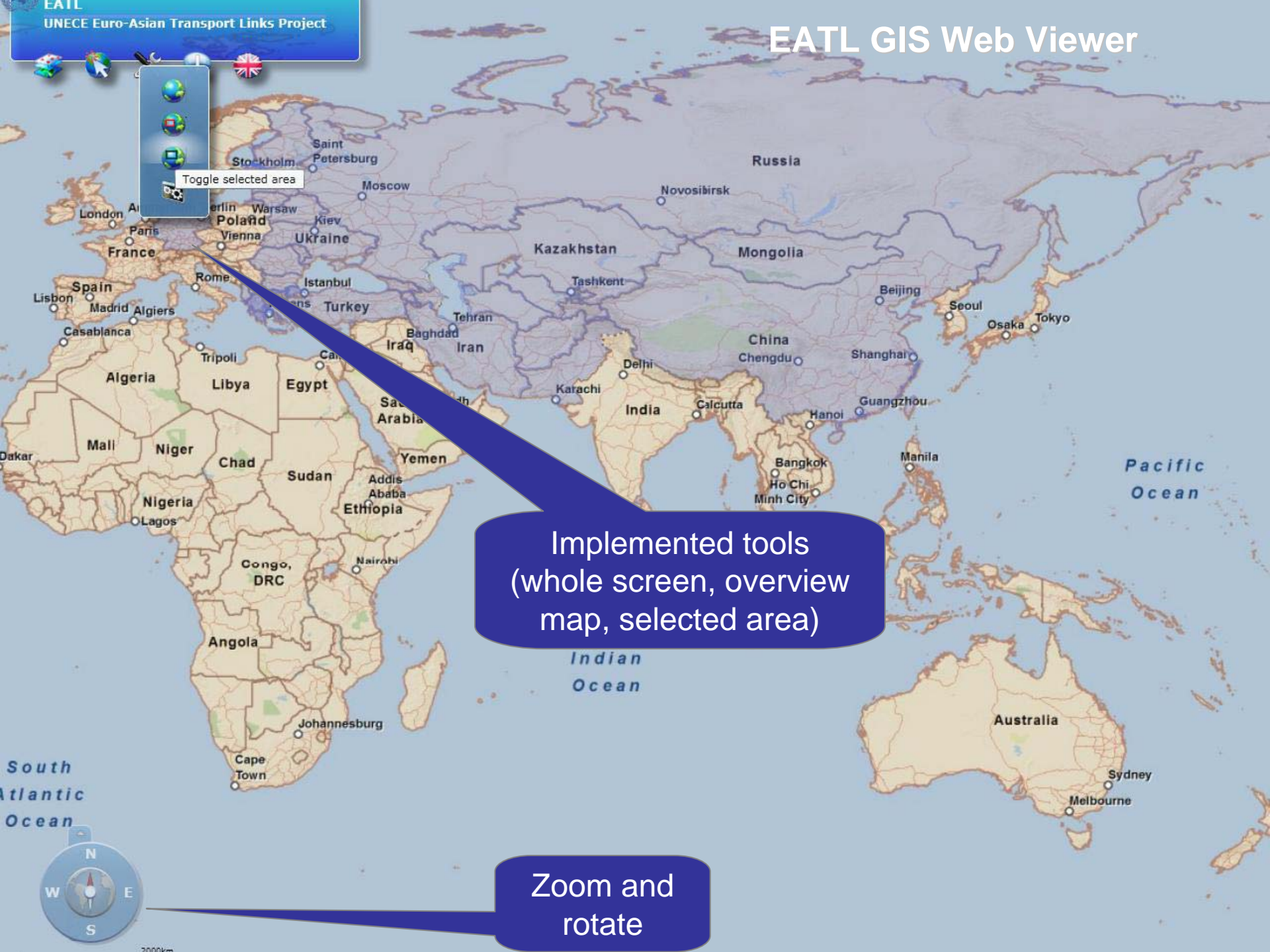




- Streets map
- Topographical map
- Imagery map (satelit)

Available background types for the map (Streets, Topographical, Imagery)







EATL GIS Web Viewer

Search on map

- EATL Maritime Ports
- EATL Inland Ports
- EATL Inland Waterways
- EATL Rail Routes

4 Xozhou - Lianyungan

Zoom to selected symbol

Ok

Cancel

Query data on a selected visible layer

South Atlantic Ocean



2000km

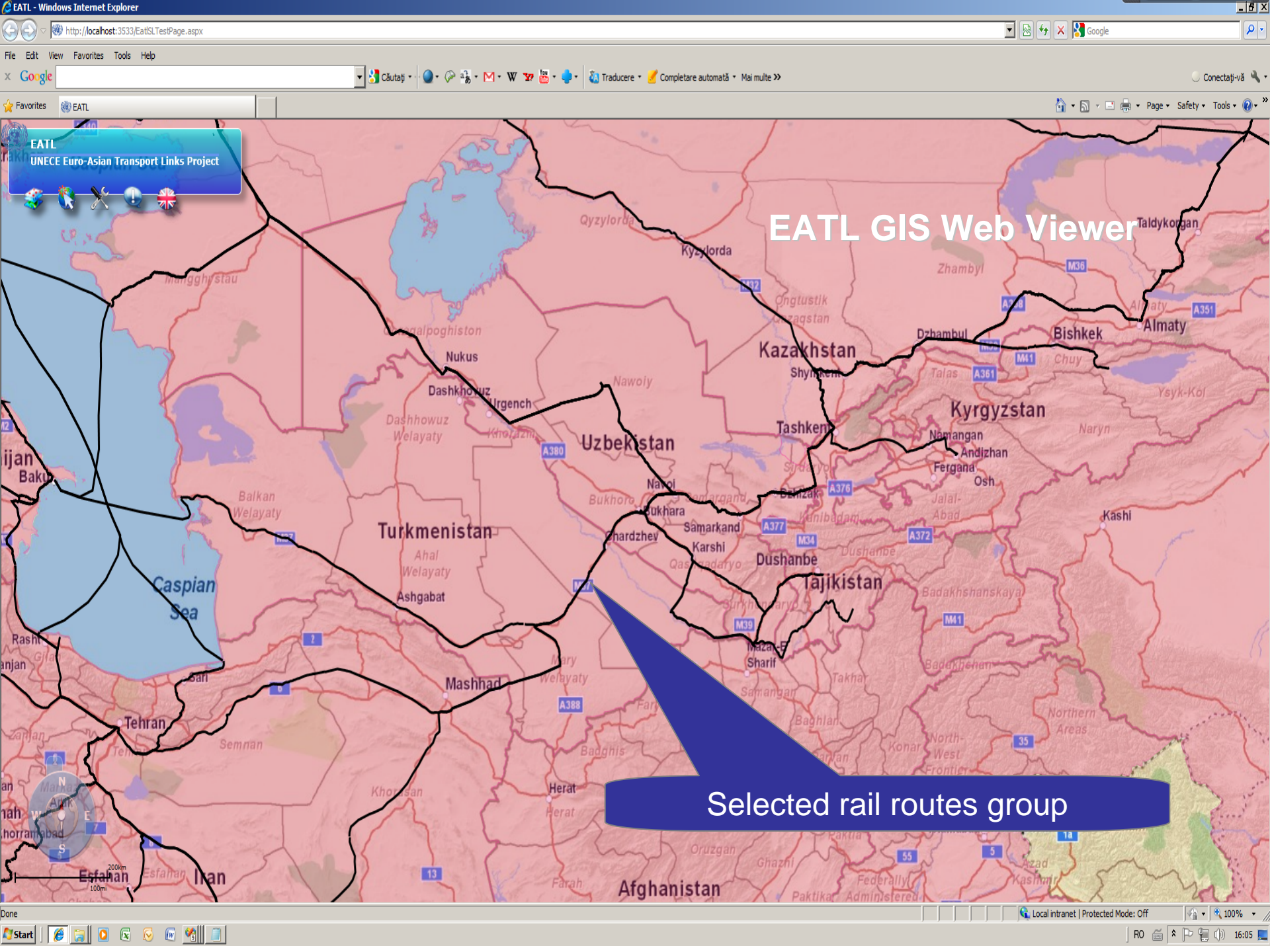


RailRoutes

- 1 Bremenhaven - Bremen - Berlin/Seddin - Fra
- 2 Bremenhaven - Bremen - Berlin/Seddin - Fra
- 3 Curtici - Arad - Bucharest - Constanta (Port)
- 4 Dragoman - Sofia - Svilengrad - Kapikule - I
- 4.a. Mersin (Port) / Iskenderun (Port) - Malaty
- 4.b. Ilychevsk (Port) - Samsun (Port) - Kalin
- 4.c. Tehran - Qom - Meybod - Yazd - Bafgh - I
- 4.d. Aliağa - Menemen - Izmir (Port) - Balikes
- 4.e. Izmir (Port) - Usak - Afyon - Yenice - Mer
- 4.f. Pehlivankoy - Uzun-kopru - Border with G
- 4.g. Ilychevsk (Port) - Derince (Port) - Izmit
- 4.h. Constanta (Port) - Derince (Port) - Izmit
- 4.i. Constanta (Port) / Kavkaz (Port) - Samsui
- 4.j. Irmak - Çankın -Çerkeş - İsmetpaşa - Kar
- 4.k. Frontier with TR and BG borders - Alexanc

Ok Cancel

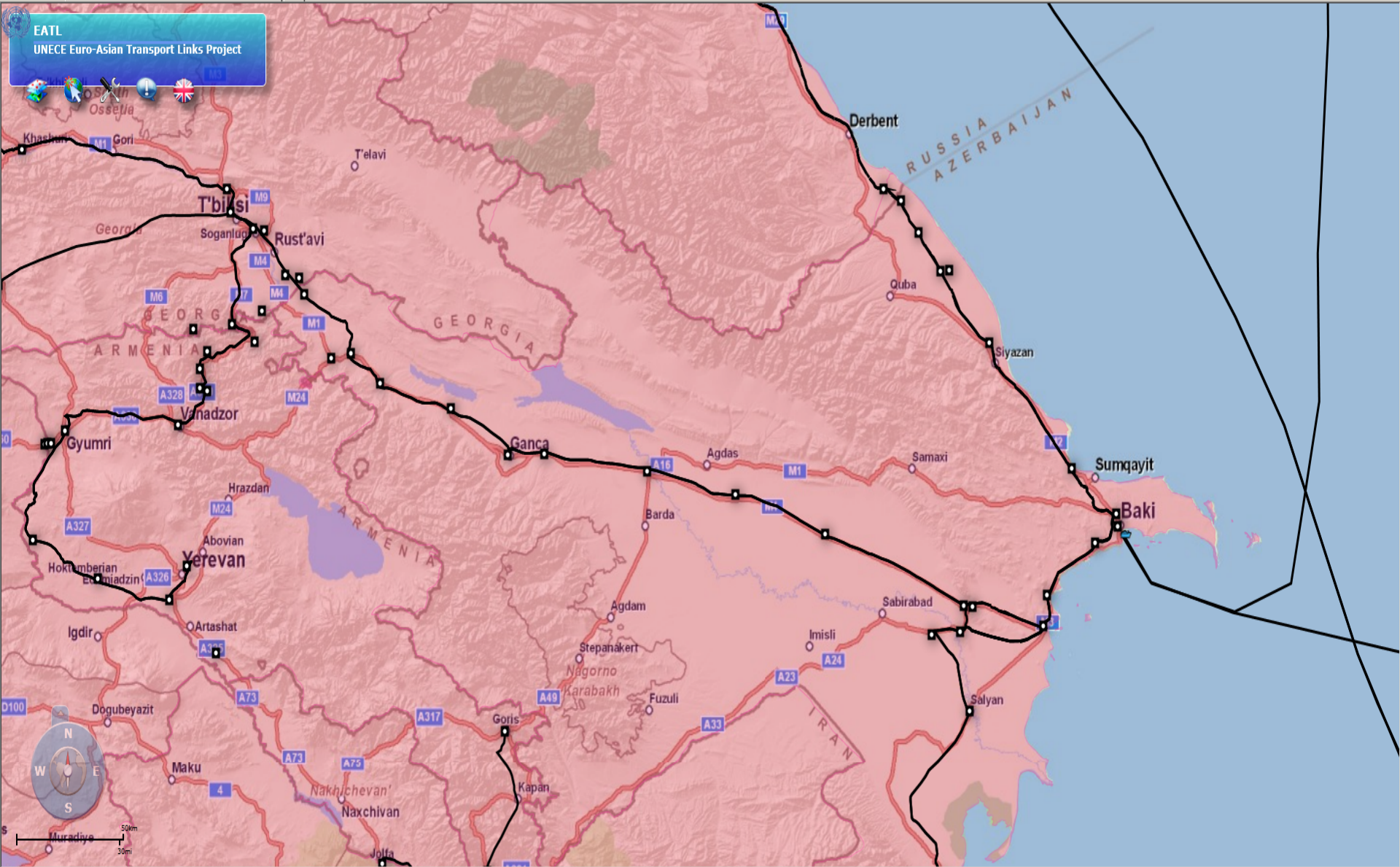
Load the selected routes group

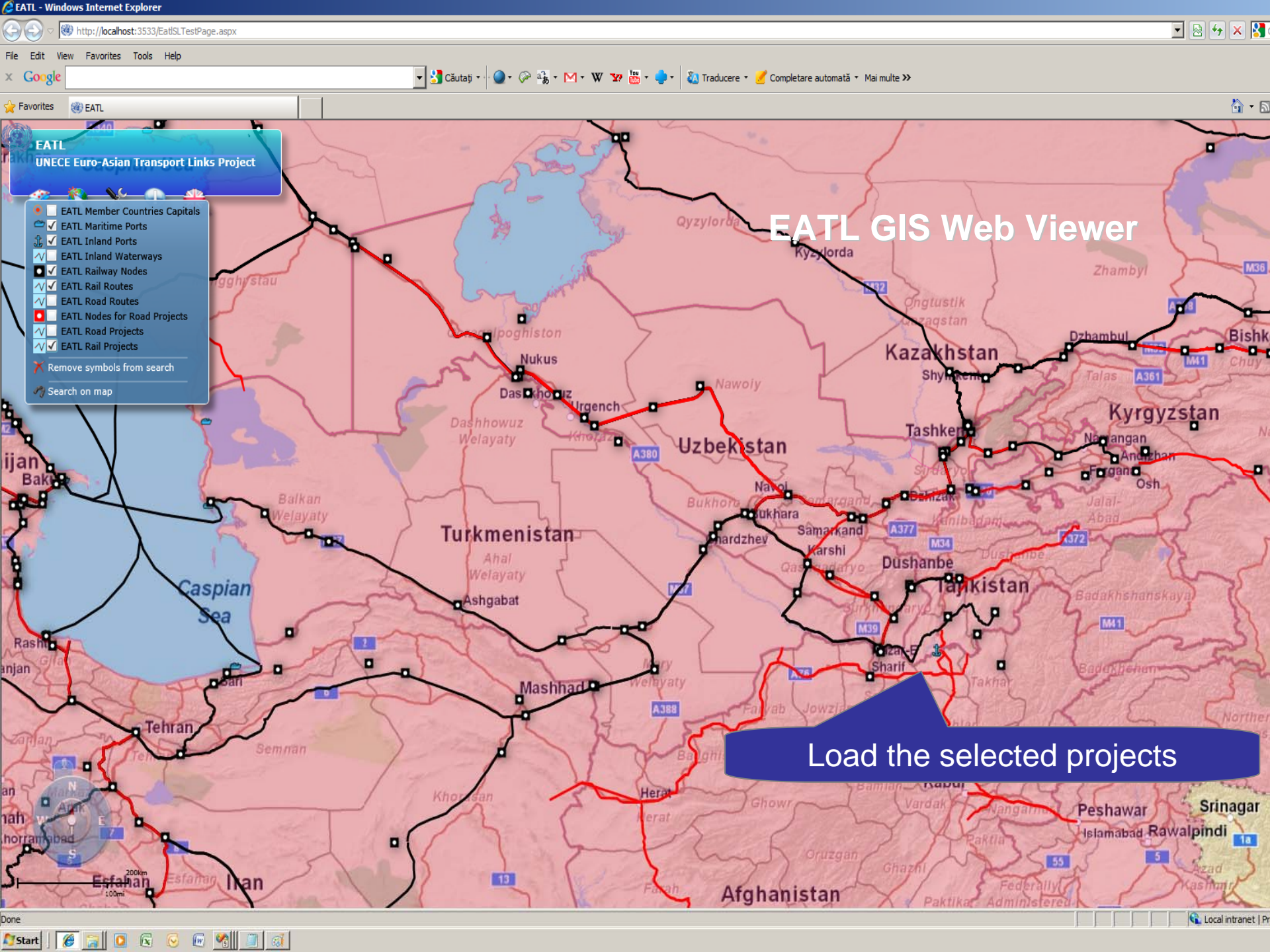


EATL
UNECE Euro-Asian Transport Links Project

EATL GIS Web Viewer

Selected rail routes group



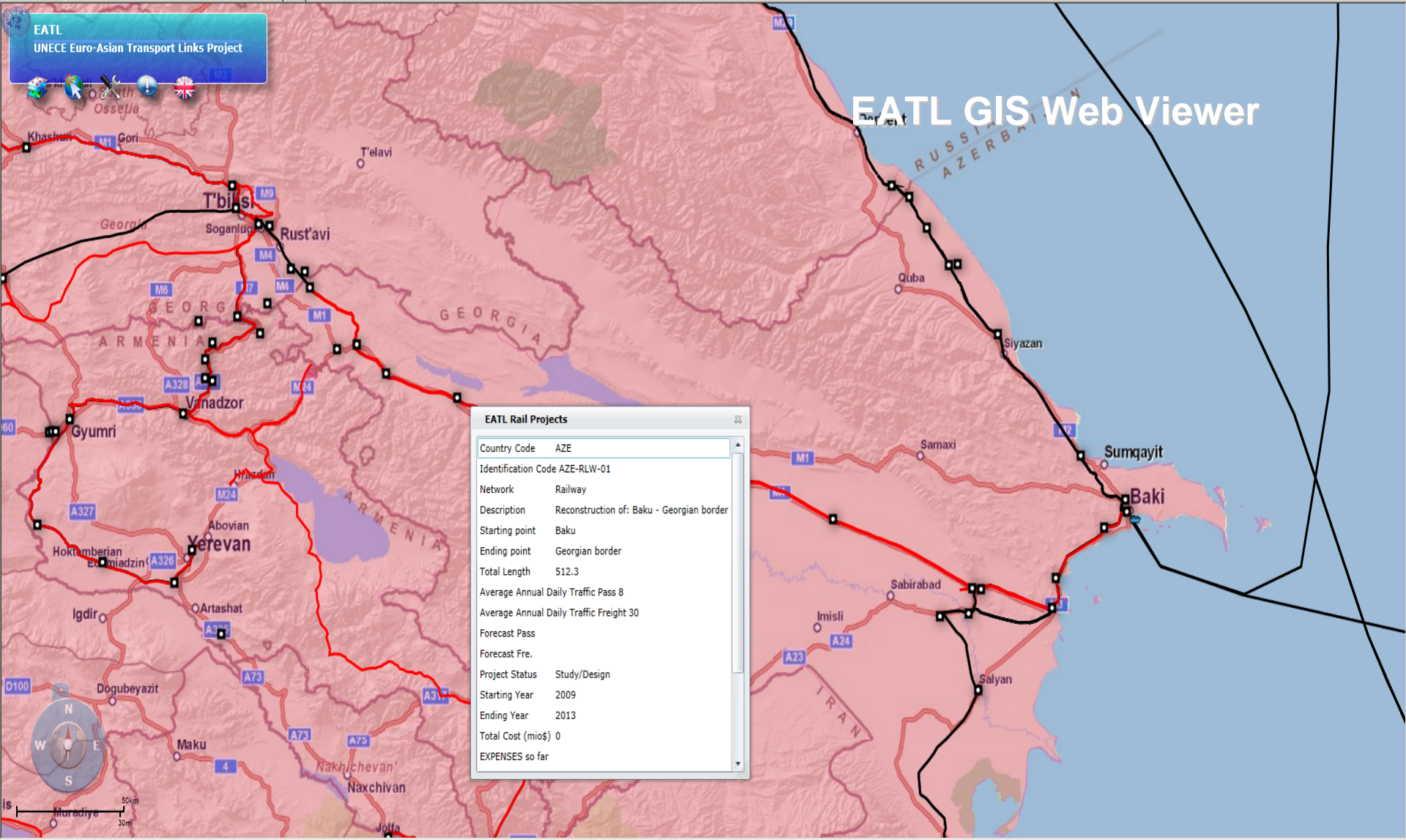


EATL UNECE Euro-Asian Transport Links Project

- EATL Member Countries Capitals
- EATL Maritime Ports
- EATL Inland Ports
- EATL Inland Waterways
- EATL Railway Nodes
- EATL Rail Routes
- EATL Road Routes
- EATL Nodes for Road Projects
- EATL Road Projects
- EATL Rail Projects
- Remove symbols from search
- Search on map

EATL GIS Web Viewer

Load the selected projects

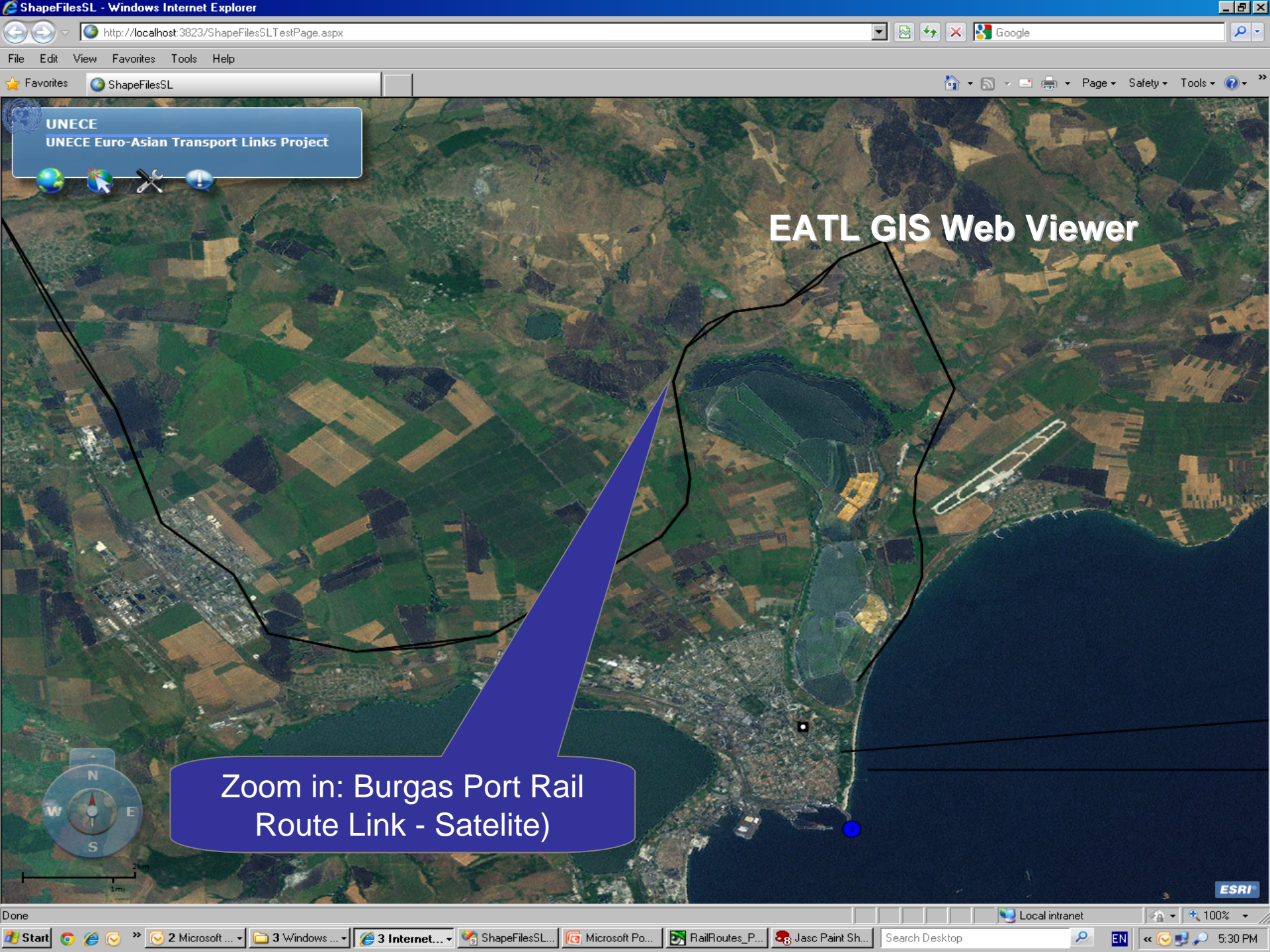


EATL GIS Web Viewer

EATL
 UNECE Euro-Asian Transport Links Project

EATL Rail Projects

Country Code	AZE
Identification Code	AZE-RLW-01
Network	Railway
Description	Reconstruction of: Baku - Georgian border
Starting point	Baku
Ending point	Georgian border
Total Length	512.3
Average Annual Daily Traffic Pass	8
Average Annual Daily Traffic Freight	30
Forecast Pass	
Forecast Fre.	
Project Status	Study/Design
Starting Year	2009
Ending Year	2013
Total Cost (mio\$)	0
EXPENSES so far	



UNECE
UNECE Euro-Asian Transport Links Project

EATL GIS Web Viewer

Zoom in: Burgas Port Rail
Route Link - Satelite)

ESRI



**UNITED NATIONS
ECONOMIC COMMISSION FOR EUROPE**

Thank you!

For not asking me so many questions

Developed by Romeo Galbenu
Exclusively for the UNECE EATL Project Phase II
Email: yellrom@gmail.com