

WP5 Working Party on Transport Trends & Economics

Workshop on Ports Hinterland Connections: the case of the South East Transport Axis project

11 September 2013, Geneva, Switzerland

# MEDNET (Mediterranean Network for Custom Procedures and Simplification of Clearance in Ports)– A Programme MED Project *Liaison and Synergies with SETA*

Professor Dimitrios Tsamboulas

Department of Transportation Planning & Engineering  
National Technical University of Athens (NTUA), Greece



# The MEDNET Project

<http://www.mednetproject.eu>

- ▶ European project co-financed by MED Programme.
- ▶ Aiming at simplifying and harmonising maritime, port and customs procedures within the Mediterranean region.



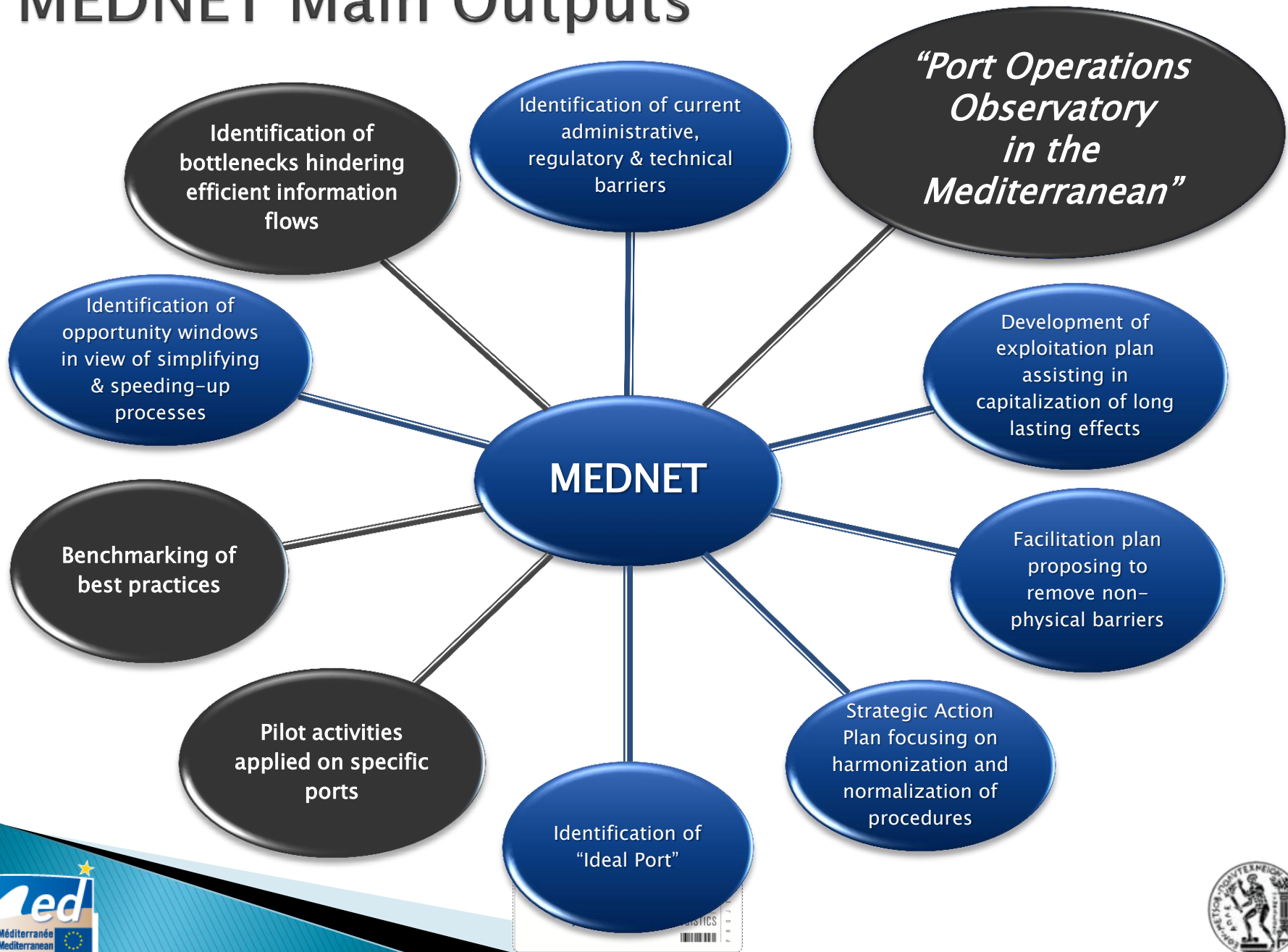
# MEDNET Partners

Country	Organization/Institution		
Italy	RAM – Rete Autostrade Mediterranee	Ancona Port Authority	Taranto Port Authority
Greece	NTUA – National Technical University of Athens	Igoumenitsa Port Authority	Patras Port Authority
France	Chamber of Commerce & Industry of Marseille Provence		
Spain	CENIT – Center for Innovation in Transportation	Valenciaport Foundation	
Slovenia	Prometni Institut Ljubljana		
Cyprus	Cyprus University of Technology	Maritime Institute of Eastern Mediterranean	
Portugal	TIS – Consultores em Transportes Inovação e Sistemas		
Croatia	KIP–Intermodal Transport Cluster	Port of Rijeka Authority	Zadar Port Authority
Albania	AIT – Albania Institute of Transport		
Malta	Transport Malta		

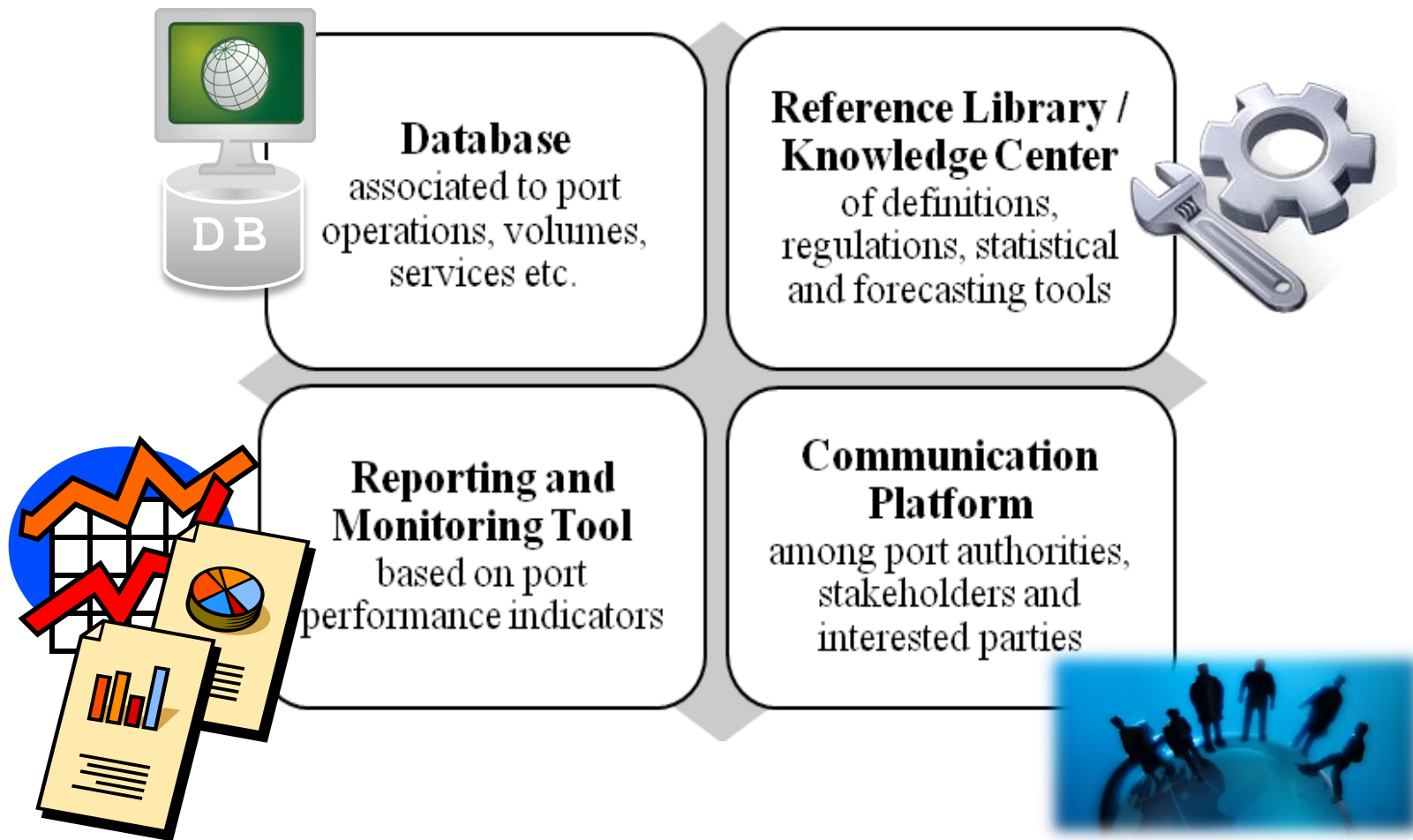
# MEDNET Objectives

- ▶ Establishment and operation of a network of port authorities and transport experts in the Mediterranean area for:
  - a) information/experience exchange on port operations and customs procedures
  - b) simplification of clearances for vessels and cargoes
- ▶ expecting to...
  - enhance **interoperable** and **intermodal operations**
  - lead to **seamless transport logistic chain** including both **maritime and hinterland transport connections**
  - develop a common **understanding of custom procedures** and clearances across the region
  - promote the introduction of **IT systems to ports** and potentially to other **intermodal nodes**

# MEDNET Main Outputs



# The Port Operations Observatory in the Mediterranean



# Web Portal Snapshot: 'Dictionary'

MEDNET PROJECT - Port O

MEDNET SEAMLESS LOGISTICS

PRIVATE AREA

Observatory Indicators **Tools** Outputs Links News & Events

Home / Port Operations Observatory

**Reference Library**

- Dictionary
- Legislation
- Studies & Projects

**Knowledge Tools**



- Ports Information
- Network / Routes
- Volume Forecast
- Data Analysis
- Reports
- Best Practices

**Data Editing**

**Search / Queries**

**CATEGORIES**

- MARITIME & VESSEL RELATED PROCEDURES (ALL VESSELS)
- PASSENGER SERVICES (PASSENGER & RO-PAX VESSELS)
- CARGO HANDLING PROCEDURES (FREIGHT VESSELS)
- ADMINISTRATIVE & LOGISTICS PROCEDURES (INCL. CUSTOMS & COMMUNICATION AMONG PORT ACTORS)
- ENVIRONMENTAL PROTECTION RELATED PROCEDURES
- PORT INFRASTRUCTURE RELATED PROCEDURES
- VESSEL INSPECTION & MAINTENANCE OPERATIONS



 Project cofinanced by the European Regional Development Fund

MEDNET project - All rights reserved - Designed by Com4EU - Legal notices

# Web Portal Snapshot: 'Ports Information'

The screenshot displays the MEDNET web portal interface. At the top, the logo reads "MEDNET SEAMLESS LOGISTICS" with a stylized blue and white graphic. A "PRIVATE AREA" button is visible in the top right. Below the logo is a navigation menu with tabs for "Observatory", "Indicators", "Tools", "Outputs", "Links", and "News & Events". The main content area features a map of Igoumenitsa Port, overlaid with a "Port Operations Observatory" data layer. A left-hand sidebar contains a "Reference Library" with sub-items: "Knowledge Tools", "Pilot Actions", "Data Editing", and "Search / Queries". The map sidebar lists various port-related points of interest, including "Port of Igoumenitsa", "Main access to port", "Customs Office", "Central Port Terminal", "Intercity Bus Station", "Ethniki Odos", and "Egnatia Odos Motorway". The map itself shows the port area with labels for "Customs Office", "Intercity Bus Station", "Port of Igoumenitsa", "Central Port Terminal", and "Main access to port". A red line indicates the "Egnatia Odos Motorway" with an arrow pointing "To Ioannina, Thessalon...". The map is powered by "Google Maps Engine" and includes a copyright notice for 2013.



Project cofinanced by the European Regional Development Fund

MEDNET project - All rights reserved - Designed by Com4EU - Legal notices

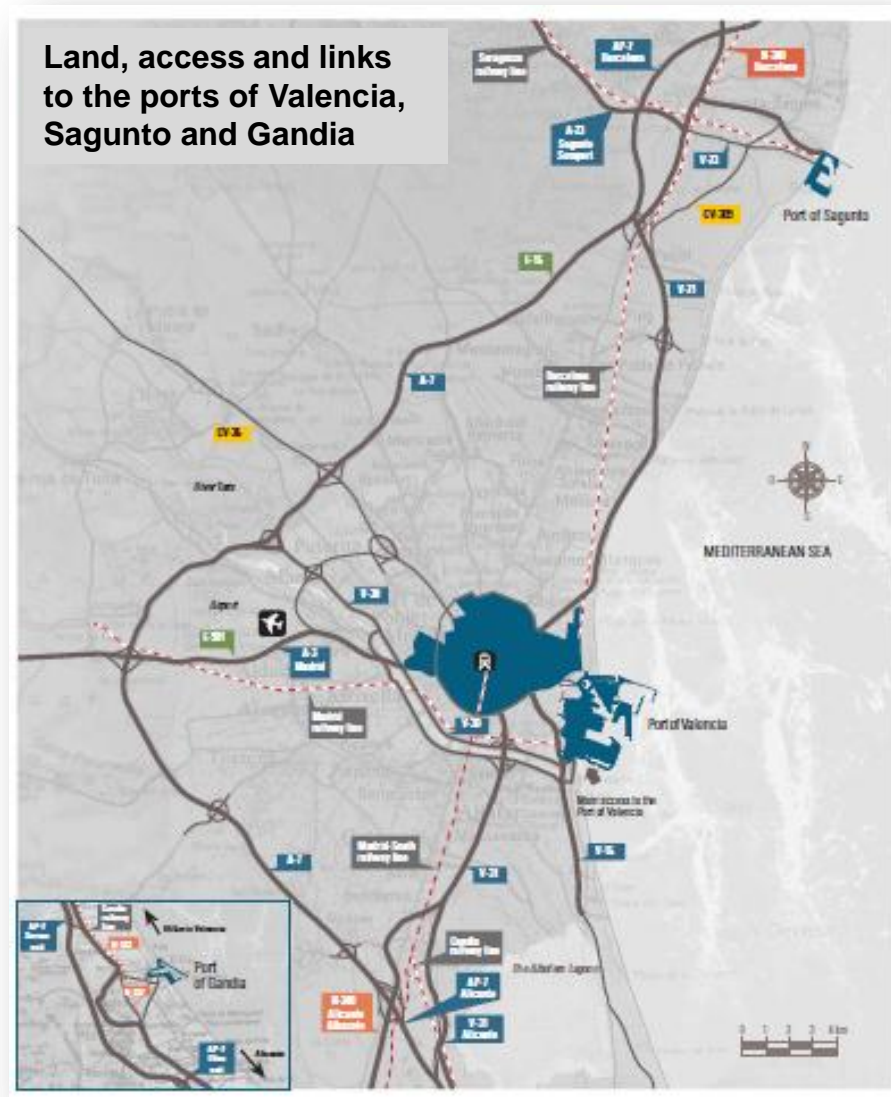




# Hinterland transport connections

The Observatory includes:

- ▶ Detailed description of hinterland infrastructure, operations, maritime and intermodal transport connections for Mediterranean seaports
- ▶ Dedicated function for knowledge and best practices sharing among maritime, logistics and port related actors



Source: Valencia Port Annual Report: 09

# MEDNET Pilot Actions

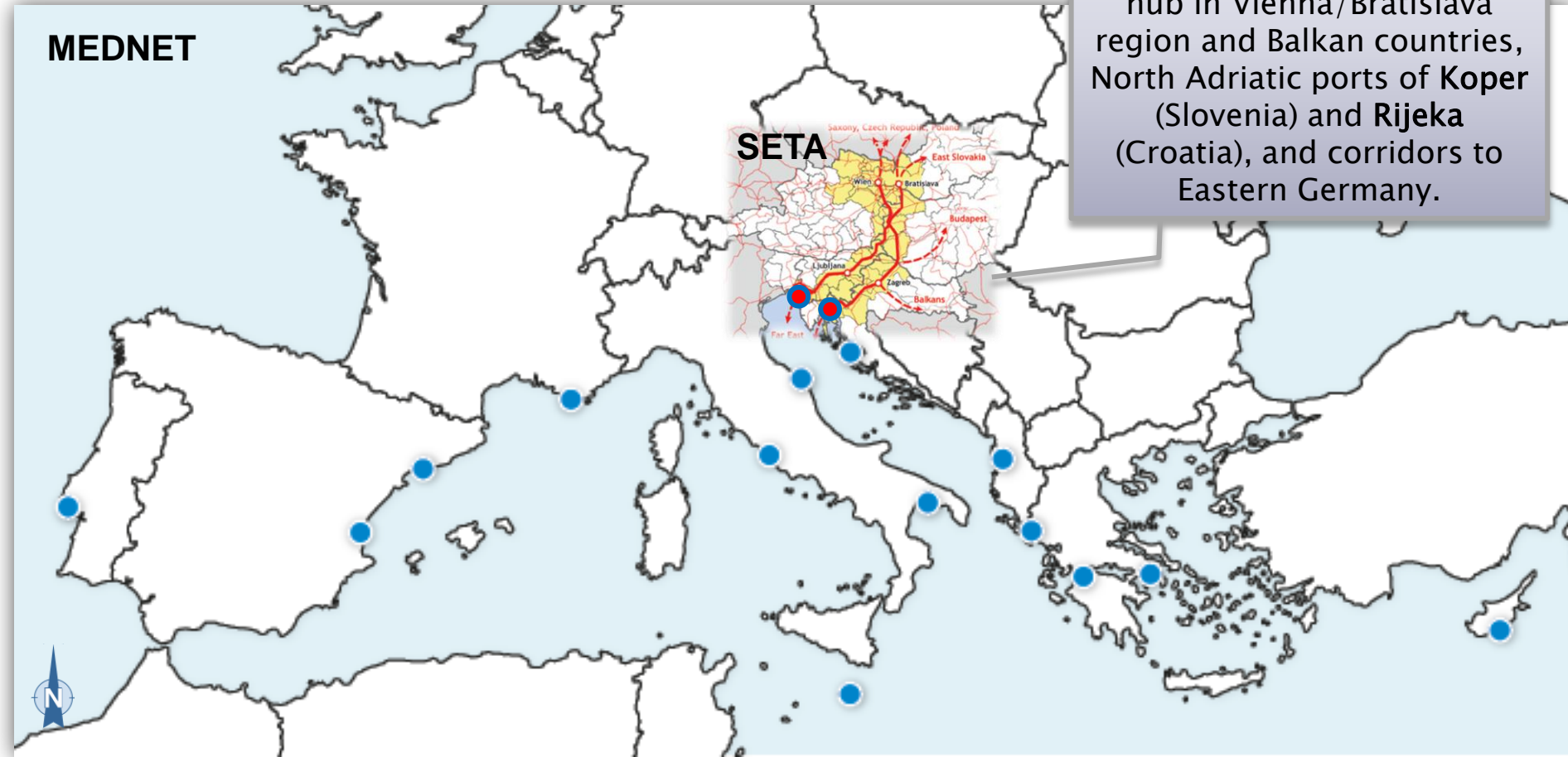
- ▶ Pilot Actions' common goal: to improve/streamline logistics chains.
  1. Simplification of procedures related to new Customs declarations: Entry/Exit Summary Declarations (ENS/EXS) and Summary Declaration for Temporary Storage (SDTS)
  2. Promotion and introduction of electronic T2L for justifying the Community status of the goods
  3. Introduction of electronic mechanisms for improving sanitary, phytosanitary and veterinary controls
  4. Parking management and Customs procedures improvements for RO-RO traffic
  5. Implementation of e-Customs procedures for RO-RO and cruise traffic
  6. Single Window and Port Community System pilots
  7. Master Plan of Malta
  8. "Port Operations Observatory in the Mediterranean"

# Geography of MEDNET & SETA

**MEDNET**

**SETA**

SETA Corridor connecting rail hub in Vienna/Bratislava region and Balkan countries, North Adriatic ports of Koper (Slovenia) and Rijeka (Croatia), and corridors to Eastern Germany.



# Rijeka Port: a MEDNET pilot action site

- ▶ A common port for MEDNET and SETA
- ▶ Pilot actions:

MEDNET	SETA
Simplification of procedures related to new Customs declarations (ENS, EXS, SDTS) → Implementation of Single Window system for Summary Declaration for Temporary Storage (SDTS) at Port of Rijeka	Business plans and demonstrators of new freight transport services (freight/block trains) along the SETA corridor to the ports of Rijeka & Koper
Promotion and introduction of electronic T2L for justifying the Community status of the goods → Testing the electronic T2L at Port of Rijeka	



Source:

[http://www.lukarijeka.hr/en/port\\_hanbook/location/default.aspx](http://www.lukarijeka.hr/en/port_hanbook/location/default.aspx)

# Liaisons and synergies

- ▶ Common key issues addressed:
  - Low level of regional, transnational and seaport accessibility
  - Growth of road transport freight volumes
- ▶ Relevant objectives:
  - Improve accessibility and logistics chain performance
  - Develop environmentally friendly freight transport corridors
  - Improve (economic) cooperation within European regions
  - Identify best practices related to port operations and formalities, customs procedures, vessels and goods clearances, hinterland access, and use of information systems.

# Cooperation and Benefits

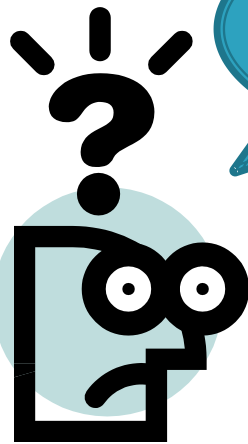
- ▶ Exchange of data, knowledge and best practices between projects
- ▶ Benefits from joining the MEDNET Knowledge Community
- ▶ Pilot actions in the Adriatic ports of Koper (Slovenia) and Rijeka (Croatia)
- ▶ Synergies between SEE & MED Programmes
- ▶ Establishment of communication channel between the participating partners
- ▶ Mutual agreement on regular updates of data, results and/or reports

**MEDNET**

SEAMLESS LOGISTICS



# Thank you for your attention!



Any  
questions?