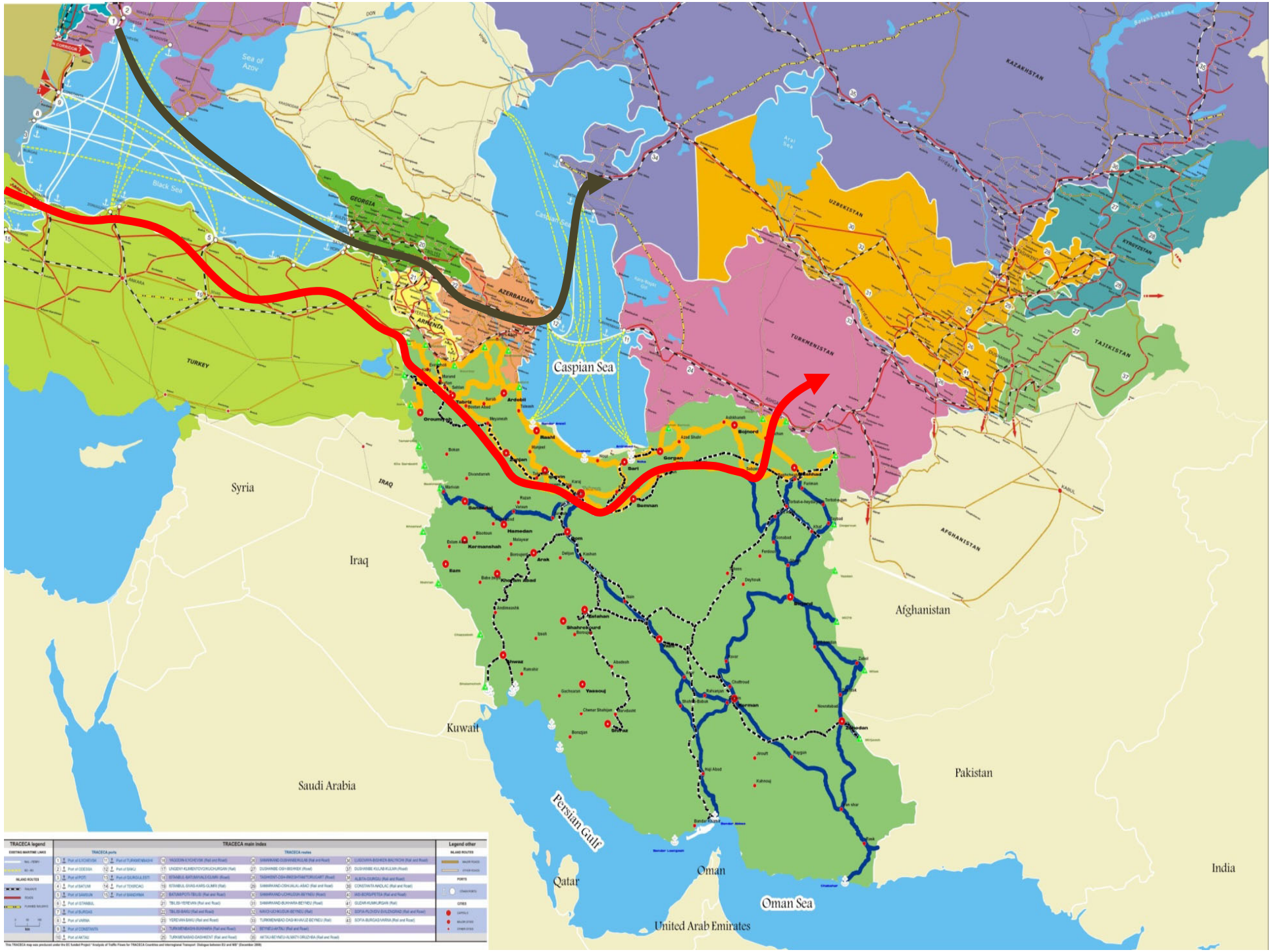




UN ECE workshop on “Road and Rail transport corridors along Europe and Asia”

7 of September 2015
Geneva, Switzerland



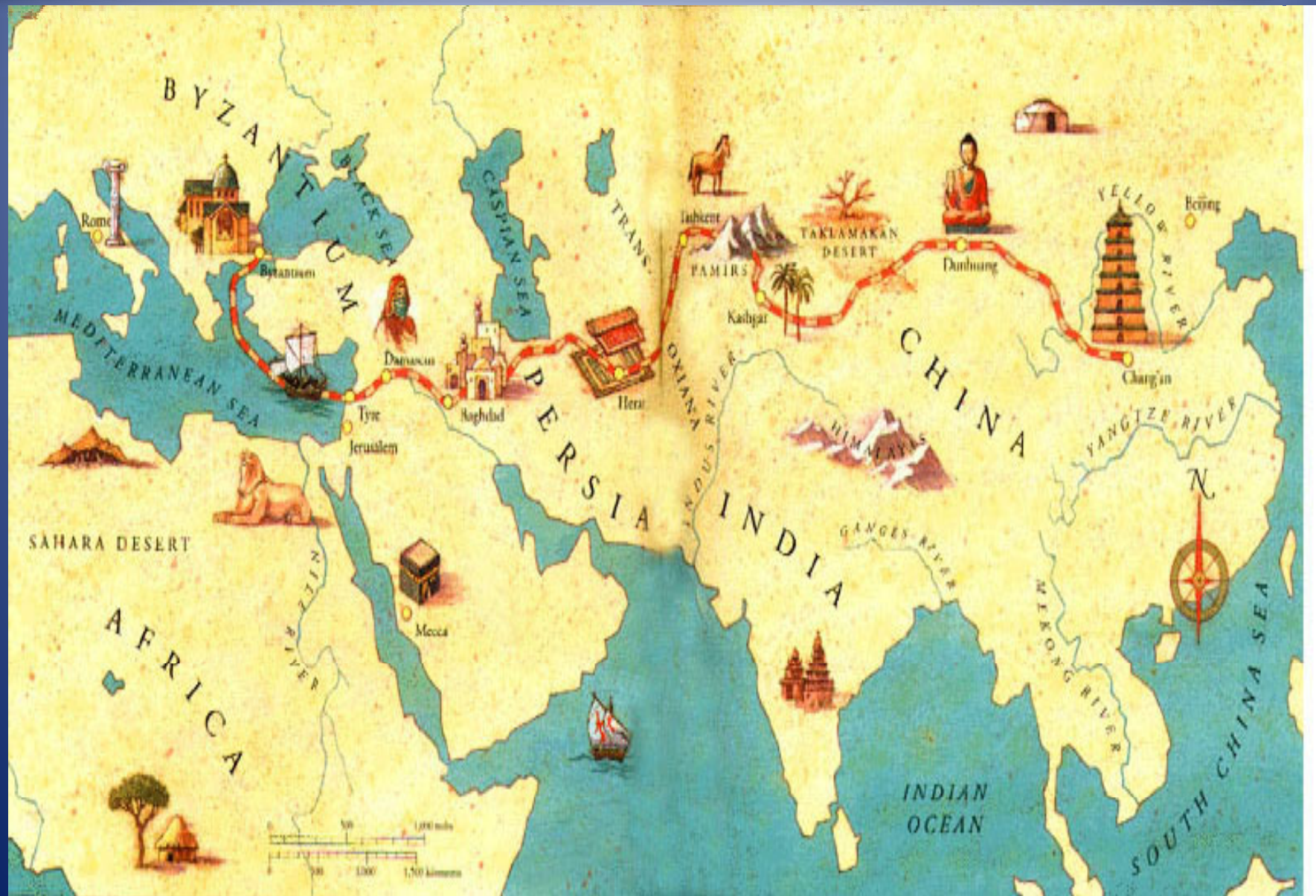
TRACECA legend		TRACECA main index		Legend other	
	1. Part of TRACECA		1. Part of TRACECA		1. Part of TRACECA
	2. Part of TRACECA		2. Part of TRACECA		2. Part of TRACECA
	3. Part of TRACECA		3. Part of TRACECA		3. Part of TRACECA
	4. Part of TRACECA		4. Part of TRACECA		4. Part of TRACECA
	5. Part of TRACECA		5. Part of TRACECA		5. Part of TRACECA
	6. Part of TRACECA		6. Part of TRACECA		6. Part of TRACECA
	7. Part of TRACECA		7. Part of TRACECA		7. Part of TRACECA
	8. Part of TRACECA		8. Part of TRACECA		8. Part of TRACECA
	9. Part of TRACECA		9. Part of TRACECA		9. Part of TRACECA
	10. Part of TRACECA		10. Part of TRACECA		10. Part of TRACECA
	11. Part of TRACECA		11. Part of TRACECA		11. Part of TRACECA
	12. Part of TRACECA		12. Part of TRACECA		12. Part of TRACECA
	13. Part of TRACECA		13. Part of TRACECA		13. Part of TRACECA
	14. Part of TRACECA		14. Part of TRACECA		14. Part of TRACECA
	15. Part of TRACECA		15. Part of TRACECA		15. Part of TRACECA

The TRACECA map was produced under the EU-Silk Road Project - 'Analysis of Supply Routes for TRACECA Countries and Neighboring Countries' (Silk Road Routes for EU and EU) (November 2016).



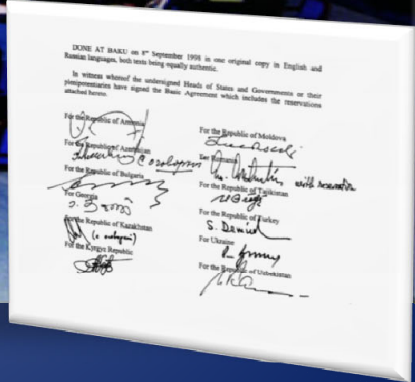
Significant geo-strategic location of the MLA Parties

Silk Road Restoration





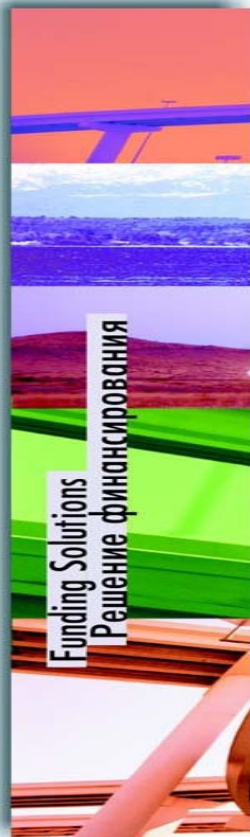
TRACECA Member States





STRATEGY OF THE IGC TRACECA for DEVELOPMENT of the INTERNATIONAL TRANSPORT CORRIDOR «EUROPE-CAUCASUS-ASIA» for the period up to 2015

Objective: Sustainable, Efficient and Integrated Multi-Modal Transport System at EU-TRACECA and TRACECA-TRACECA Levels
Цель: устойчивая, эффективная и интегрированная мультимодальная транспортная система на уровнях ЕС-ТРАСЕКА и ТРАСЕКА-ТРАСЕКА



Funding Solutions

Решение финансирования



Safe, Secure and Sustainable Transport

Сохранность, безопасность и стабильность перевозок



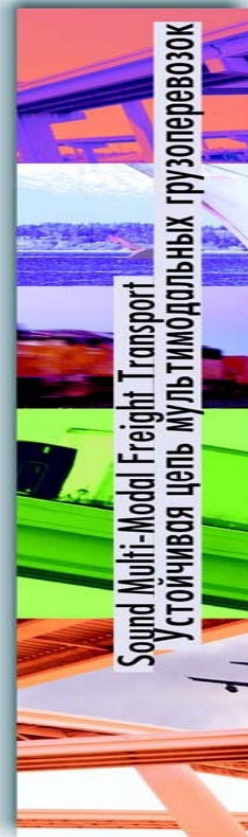
Institutional Dimension

Институциональная составляющая



Integration and Cohesion of Infrastructure Networks

Интеграция и связь между сетями инфраструктуры



Sound Multi-Modal Freight Transport

Устойчивая цепь мультимодальных грузоперевозок



Full Potential and Boosting of Air Transport

Использование потенциала воздушных перевозок

Further Institutionalisation
MLA, Achievements and Relevant Experiences
Дальнейшая институционализация
ОМС, достижения и опыт

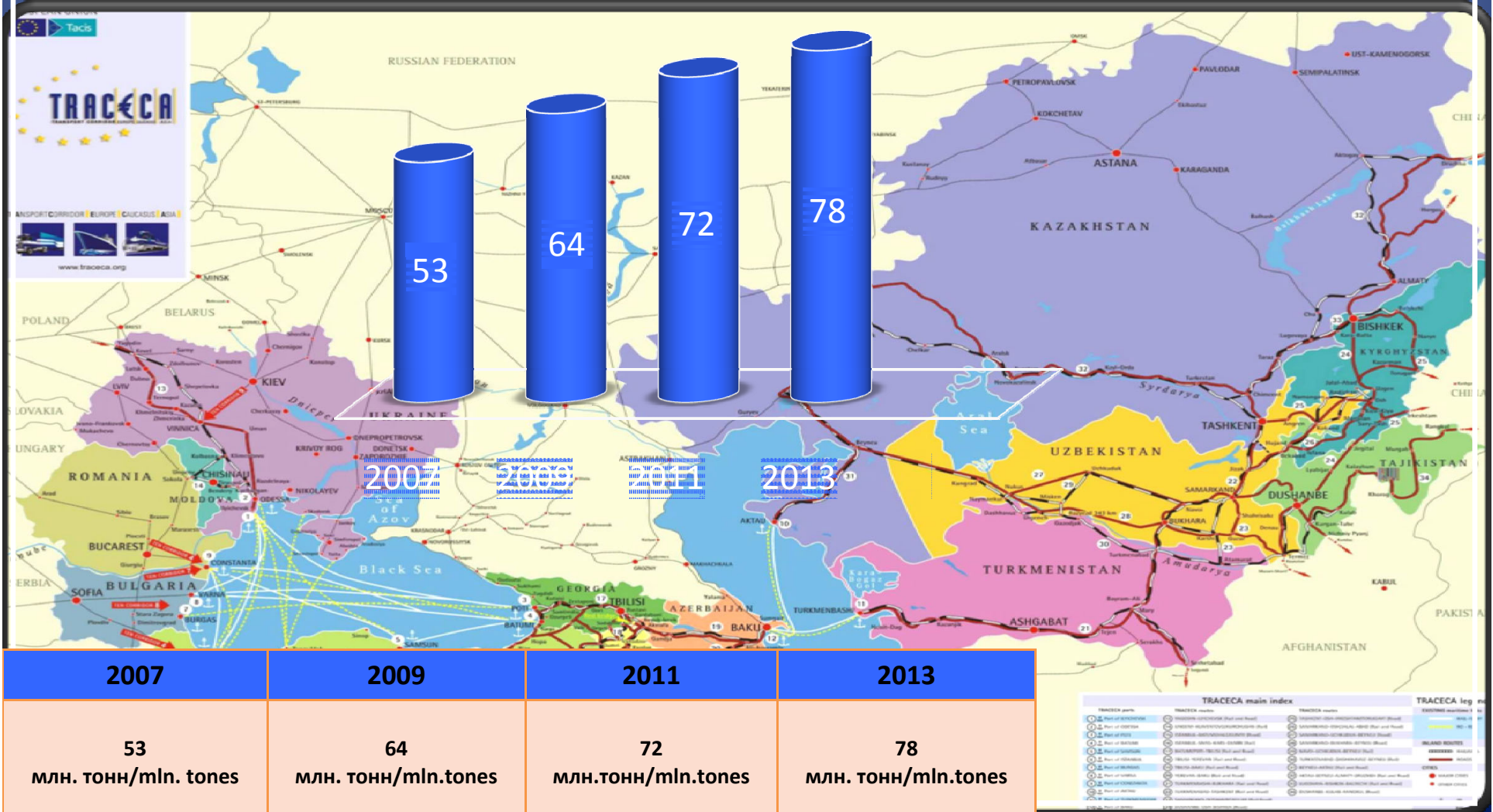


TRACECA IGC Strategy in brief:

- **Strengthening and Modernising the Institutional Dimensions of Transport:** this is aimed at ensuring the existence of strong, competent and well-designed institutions in the various TRACECA countries that can guide, support and nurture the future progress and development of the regional transport system.
- **Integration and Cohesion of Infrastructure Networks:** this is aimed at putting in place a modern, compatible and interoperable physical infrastructure network that is well-connected across the different transport modes and across the various TRACECA countries, and having good links to the trans-European transport network.
- **Sound Multimodal Freight Transport Chain:** this is aimed at ensuring the smooth and uninterrupted flow of trade, for all types of freight, across different modes of transport and across different countries.
- **Exploiting the Full Potential of Air Transport and Boosting Air Passenger Traffic:** this is aimed at enhancing the movement of passengers between the EU and TRACECA countries and therefore focuses on air transport as the predominant type of passenger travel in the region.
- **Making Transport Safer, Secure and Sustainable:** this is aimed at ensuring that the regional transport system has both social and environmental faces, and that it actively promotes the safety, security and protection of users, property, general public and environment that might be involved in or affected by this system.
- **Secure Funding:** this is aimed at tapping at different sources of financing to ensure that sustainable and sufficient funds will be available to successfully initiate and complete the investments that are required in regional transport infrastructure and other projects.



Dynamics of freight traffic through the TRACECA international transport corridor





TRACECA PROJECTS



82 Projects -178,5 million Euros

14 Investment Projects

68 Technical Assistance Projects



On going TA projects

Transport Dialogue and Networks Interoperability



TRACECA Road Safety



TRACECA Civil Aviation Safety



Maritime Safety and Security



TRACECA International Investment Forum

Standing mechanism providing for direct and consistent interaction of TRACECA with investors

First and Second TRACECA Investment Forum in 2010 and 2012, Brussels:
32 projects in the size of more than 6 billion Euros from 12 TRACECA countries

- ❖ Projects covered all modes of transport including intermodal
- ❖ More than 200 participants from 25 countries of the world
- ❖ During Forums 3 projects in the size of more than 600 million Euro received financial support
- ❖ Other projects are negotiated between countries and investors

	International Convention on Harmonization and Simplification of Customs Procedures, 1973 (amended and added in 1993).	International Convention on the Harmonization of Frontier Controls of Goods , 1982.	AGREEMENT on the International Carriage of Perishable Foodstuffs and on the Special Equipment to be Used for such Carriage (ATP)
Azerbaijan			
Armenia			
Bulgaria			
Georgia			
Iran			
Kazakhstan			
Kyrgyzstan			
Moldova			
Romania			
Tajikistan			
Turkey			
Uzbekistan			
Ukraine			



TRACECA PERMIT



INTERGOVERNMENTAL COMMISSION TRACECA PERMANENT SECRETARIAT
МЕЖПРАВИТЕЛЬСТВЕННАЯ КОМИССИЯ ТРАСЕКА ПОСТОЯННЫЙ СЕКРЕТАРИАТ

PERMIT for international road carriage of goods (1 round trip) through the territory of the member countries of the TRACECA Multilateral Permit System

РАЗРЕШЕНИЕ на осуществление международной автомобильной перевозки грузов (1 рейс/оборот) по территории стран – участниц системы многосторонних разрешений ТРАСЕКА



Flag
Флаг

Series and number №2016/
Серия и номер

Country of issue:
Страна-эмитент:

Permit is valid till 31/01/2017
Разрешение действительно до 31/01/2017

Legal name of the carrier identification
Юридическое наименование перевозчика с реквизитами

Registration number of freight motor vehicle
Регистрационный номер грузового АТС

Trailer (semitrailer)*
Прицеп (полуприцеп)*

TRAFFIC TERMS AND RESTRICTIONS SHALL BE REGULATED ACCORDING TO THE USER GUIDE FOR "TRACECA MULTILATERAL PERMIT" MINIMUM "EURO-3 SAFE LORRY/E-3 SAFE" УСЛОВИЯ ПЕРЕВОЗКИ И ОГРАНИЧЕНИЯ РЕГУЛИРУЮТСЯ СОГЛАСНО РУКОВОДСТВУ ПОЛЬЗОВАТЕЛЯ «МНОГОСТОРОННЕЕ РАЗРЕШЕНИЕ ТРАСЕКА» МИНИМУМ "EURO-3 SAFE LORRY/E-3 БЕЗОПАСНЫЙ"

General Provisions (on the basis of the "TRACECA Multilateral Permit" User Guide)

- TRACECA Permit is a multilateral permit authorizing to perform bilateral, transit traffic and road haulage to/from third countries by carriers' vehicles of the member countries of the TRACECA Permits System through the territory of other TRACECA Permits System member countries over a certain period of time.
- The TRACECA Permit is valid for the following traffic performed along the ITC TRACECA across the border check-points of the Parties to the Basic Agreement given in Appendix 3:
 - a) transport services between the member countries of the TRACECA Permits System;
 - b) transit transport services through the territory of the member country of the TRACECA Permits System;
 - c) transport services to/from third countries from/to the member country of the TRACECA Permits System.
- The TRACECA Permit is valid for one occasion (designed for one-time use) and authorizes carriers to perform loaded or unloaded haulage in the forward or reverse directions over a period of one trip. At the same time the number of entries to any member country of the TRACECA Permit System should not exceed two times.
- The TRACECA Permit does not authorize cabotage, unless otherwise provided in the national legislation of the TRACECA Permits System member countries.
- The TRACECA Permit does not exempt the carrier from the liability of paying dues, fees as well as other charges provided in the national legislation of each country, the collection of which does not contradict the MLA provisions unless otherwise provided in bilateral agreements in the field of international road traffic between individual TRACECA Permits system member countries.
- The TRACECA Permit does not exempt the carrier from meeting the requirements related to the carriage of dangerous goods, the passage of oversized and heavy-weight vehicles, as well as - from observing the national legislation of the country of entry or transit.
- The TRACECA Permits may not be used for other trips except for those which are given in Article 3 of the "TRACECA Multilateral Permit" User Guide.
- The TRACECA Permit may be valid for the period – from 1 January of the corresponding year till 31 January of the next year.
- The carrier who obtained a TRACECA Permit may not transfer or sell it to another carrier and shall have to return the permit to the competent authority.
- The original of the TRACECA Permit shall be distributed to the road carrier and kept on board the vehicle over the whole period of the trip
- Amendments in the completed TRACECA Permit shall not be allowed.

Общие положения (на основании Руководства Пользователя «Многостороннее разрешение ТРАСЕКА»)

- Разрешение ТРАСЕКА - это многостороннее разрешение, которое дает право на осуществление двусторонних, транзитных перевозок и перевозок в/из третьих стран автотранспортными средствами перевозчиков стран-участниц Системы разрешений ТРАСЕКА по территориям других стран-участниц Системы разрешений ТРАСЕКА на протяжении определенного периода.
- Разрешение ТРАСЕКА действительно на следующие виды перевозок, осуществляемых по МТК ТРАСЕКА через погранично-пропускные пункты Стран Основного Соглашения, указанные в Приложении 3:
 - a) перевозки между странами-участницами Системы разрешений ТРАСЕКА;
 - b) перевозки транзитом через территорию страны-участницы Системы разрешений ТРАСЕКА
 - c) перевозки в/из третьих стран в/из страны-участницы Системы разрешений ТРАСЕКА.
- Разрешение ТРАСЕКА является разовым (предназначено для однократного использования) и дает право на выполнение поездки с грузом или же без груза, в прямом и обратном направлении на протяжении одного курорта. При этом количество заездов в любую страну - участницу Системы разрешений ТРАСЕКА не должно превышать двух раз.
- Разрешение ТРАСЕКА не дает право на каботаж, если иное не предусмотрено национальным законодательством страны-участницы Системы разрешений ТРАСЕКА.
- Разрешение ТРАСЕКА не освобождает от обязанности уплаты обязательных платежей, сборов, а также других платежей, предусмотренных национальным законодательством каждой из стран, вхождение которых не противоречит положениям СМС, если иное не предусмотрено двусторонними соглашениями в области международных автомобильных перевозок между отдельными странами-участницами Системы разрешений ТРАСЕКА.
- Разрешение ТРАСЕКА не освобождает перевозчика от требований, связанных с перевозкой опасных грузов, движением негабаритных и тяжеловесных автомобильных транспортных средств, а также соблюдения требований национального законодательства страны ввоза или транзита.
- Разрешения ТРАСЕКА не могут использоваться на другие поездки, кроме тех, что указаны в статье 3 Руководства Пользователя «Многостороннее Разрешение ТРАСЕКА».
- Разрешения ТРАСЕКА могут быть использованы в период с 1 января соответствующего года по 31 января следующего года.
- Перевозчик, получивший разрешение ТРАСЕКА, не может передать или продать его другому перевозчику и обязан вернуть разрешение компетентному органу.
- Оригинал разрешения ТРАСЕКА выдается автомобильному перевозчику и хранится на борту автотранспортного средства на протяжении всей перевозки.
- Внесение исправлений в разрешение ТРАСЕКА не допускается.

Name of the National Competent Authority which issued the permit

Signature, stamp / Date of issue

Наименование Национального Компетентного Органа, выдавшего разрешение

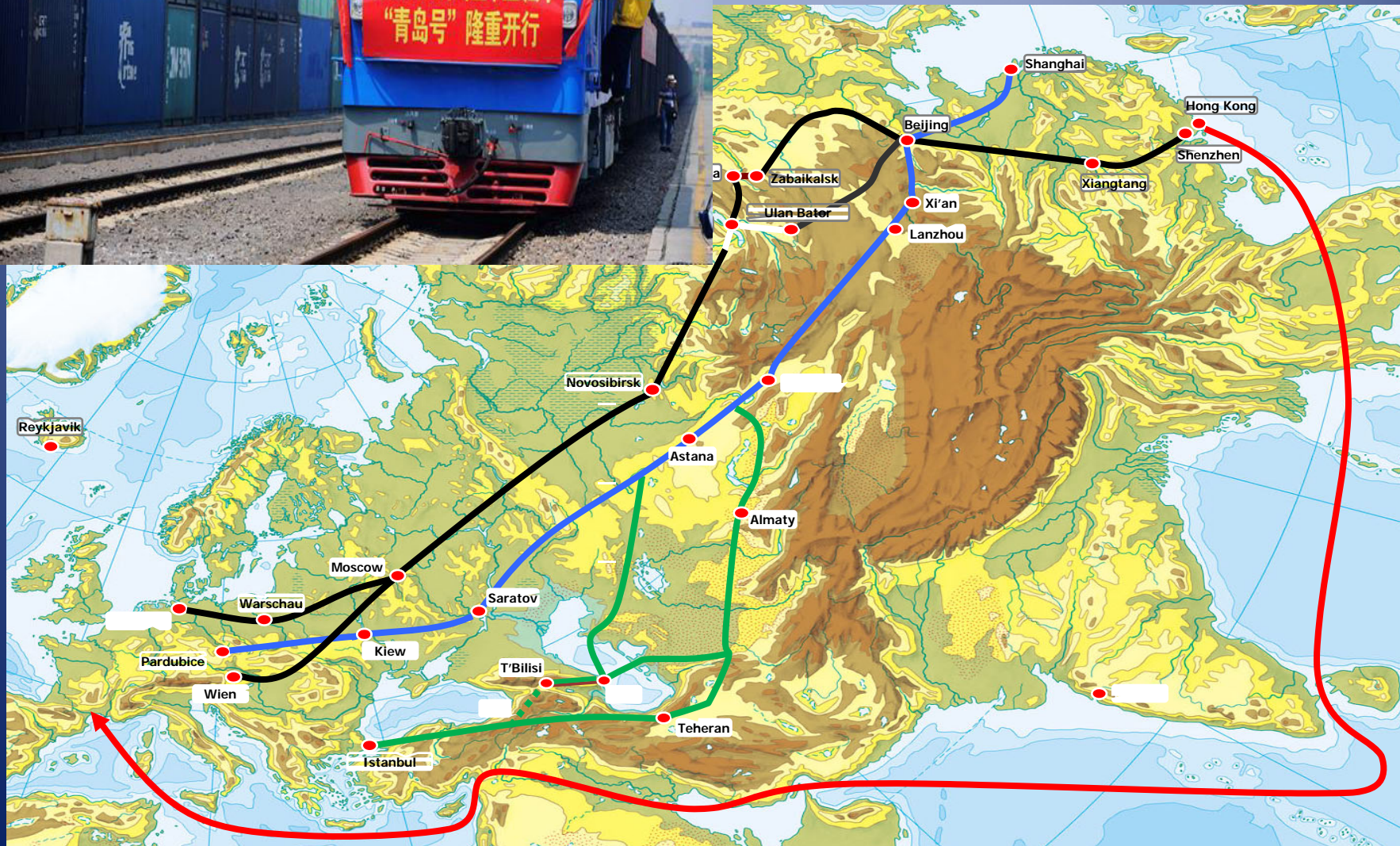
Подпись, печать / Дата выдачи

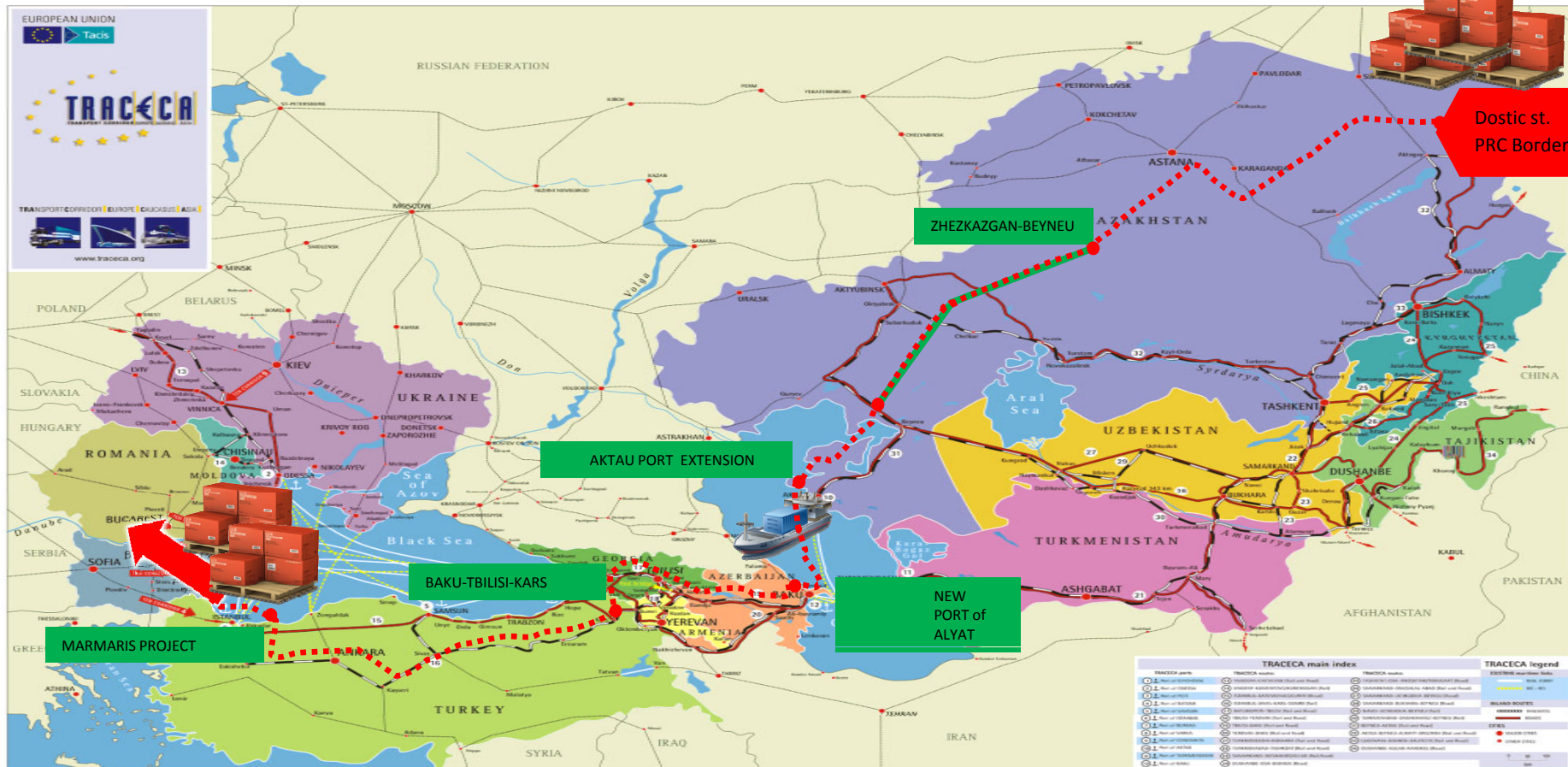
* - to be filled in by carrier's wish / вносится при желании перевозчика



In 2014 between China and Europe 308 block-train trips

26070 TEU (increase 258%)





«Silk Wind» Project (Шелковый ветер)

AZERBAIJAN-GEORGIA-TURKEY

Baku-Tbilisi-Kars new railway link (completion –end of 2015, capacity - 6 million tons per year) Reconstruction of rail network from Baku to Border of Georgia – 503 km. Construction of new rail line within Georgia – 30 km, Turkey - 68 km.





First block-train from China "Nomad express"





TRACECA ROUTES		TRACECA ROUTES main index		TRACECA routes		TEN - T		ISLAND ROUTES	
MARITIME LINES		TRACECA ports		TRACECA routes		Priority Axes		ISLAND ROUTES	
1. RAIL - BERRY	1. Part of KYIVCHENSK	1. Part of TURKMENBASHI	14. YAGODIN - KYIVCHENSK (Rail and Road)	24. SAMARKAND - DUSHANBE/KULAB (Rail and Road)	24. LUDSHIVA - BISHKEK - BALKHON (Rail and Road)	Priority Axes	ISLAND ROUTES	ISLAND ROUTES	
2. RAIL - NO	2. Part of ODESSA	2. Part of BAKU	15. URGENTY - KLIMENTOVOKUCHURGAN (Rail)	27. DUSHANBE - OSH - BISHKEK (Road)	27. DUSHANBE - KULAB - KOLMA (Road)	Road Priority Axis	Other Routes	Other Routes	
3. RAIL - PO	3. Part of POTI	3. Part of SHIRKISLEBTI	16. ISTANBUL - BATUMI/VALEJOVIRI (Road)	28. TASHKENT - OSH - IRKESHTANTORIGART (Road)	28. ALMATA - GURJAN (Rail and Road)	Rail Priority Axis	Ports	Ports	
4. RAIL - BAKUMI	4. Part of BAKUMI	4. Part of TEBULI	17. ISTANBUL - TRABZON - KARS - GUMRI (Rail)	29. SAMARKAND - CHIRCHIK/AL-ABAD (Rail and Road)	29. COCOSTAN - SHAKHAC (Rail and Road)	Airports and Ports	Airports	Airports	
5. RAIL - SAMURSI	5. Part of SAMURSI	5. Part of BAKUMI	18. BAKUMI - TRABZON - KARS - GUMRI (Rail)	30. SAMARKAND - UCHKODUK - BENEU (Road)	30. UCHKODUK - BENEU (Road)	Cities	Cities	Cities	
6. RAIL - BAKUMI	6. Part of BAKUMI	6. Part of ALMATA	19. BAKUMI - TRABZON - KARS - GUMRI (Rail)	31. SAMARKAND - BISHKEK - BENEU (Road)	31. SOFIA - PLOVDIV - SVILENGRAD (Rail and Road)	Other Cities	Other Cities	Other Cities	
7. RAIL - BAKUMI	7. Part of BAKUMI	7. Part of BAKUMI	20. BAKUMI - TRABZON - KARS - GUMRI (Rail)	32. BAKUMI - UCHKODUK - BENEU (Rail)	32. TURKMENABAD - GASHKHOVIZ - BENEU (Rail)				
8. RAIL - BAKUMI	8. Part of BAKUMI	8. Part of BAKUMI	21. BAKUMI - TRABZON - KARS - GUMRI (Rail)	33. TURKMENABAD - GASHKHOVIZ - BENEU (Rail)	33. BENEU - AKTALI (Rail and Road)				
9. RAIL - BAKUMI	9. Part of BAKUMI	9. Part of BAKUMI	22. BAKUMI - TRABZON - KARS - GUMRI (Rail)	34. BENEU - AKTALI (Rail and Road)	34. AKTALI - BENEU - ALMATA - DZUZHBA (Rail and Road)				
10. RAIL - BAKUMI	10. Part of BAKUMI	10. Part of BAKUMI	23. BAKUMI - TRABZON - KARS - GUMRI (Rail)	35. AKTALI - BENEU - ALMATA - DZUZHBA (Rail and Road)	35. MERKIN - KAPKOVYBENDERE (Road)				
11. RAIL - BAKUMI	11. Part of BAKUMI	11. Part of BAKUMI	24. BAKUMI - TRABZON - KARS - GUMRI (Rail)						
12. RAIL - BAKUMI	12. Part of BAKUMI	12. Part of BAKUMI	25. BAKUMI - TRABZON - KARS - GUMRI (Rail)						
13. RAIL - BAKUMI	13. Part of BAKUMI	13. Part of BAKUMI	26. BAKUMI - TRABZON - KARS - GUMRI (Rail)						
14. RAIL - BAKUMI	14. Part of BAKUMI	14. Part of BAKUMI	27. BAKUMI - TRABZON - KARS - GUMRI (Rail)						
15. RAIL - BAKUMI	15. Part of BAKUMI	15. Part of BAKUMI	28. BAKUMI - TRABZON - KARS - GUMRI (Rail)						
16. RAIL - BAKUMI	16. Part of BAKUMI	16. Part of BAKUMI	29. BAKUMI - TRABZON - KARS - GUMRI (Rail)						
17. RAIL - BAKUMI	17. Part of BAKUMI	17. Part of BAKUMI	30. BAKUMI - TRABZON - KARS - GUMRI (Rail)						
18. RAIL - BAKUMI	18. Part of BAKUMI	18. Part of BAKUMI	31. BAKUMI - TRABZON - KARS - GUMRI (Rail)						
19. RAIL - BAKUMI	19. Part of BAKUMI	19. Part of BAKUMI	32. BAKUMI - TRABZON - KARS - GUMRI (Rail)						
20. RAIL - BAKUMI	20. Part of BAKUMI	20. Part of BAKUMI	33. BAKUMI - TRABZON - KARS - GUMRI (Rail)						
21. RAIL - BAKUMI	21. Part of BAKUMI	21. Part of BAKUMI	34. BAKUMI - TRABZON - KARS - GUMRI (Rail)						
22. RAIL - BAKUMI	22. Part of BAKUMI	22. Part of BAKUMI	35. BAKUMI - TRABZON - KARS - GUMRI (Rail)						
23. RAIL - BAKUMI	23. Part of BAKUMI	23. Part of BAKUMI	36. BAKUMI - TRABZON - KARS - GUMRI (Rail)						
24. RAIL - BAKUMI	24. Part of BAKUMI	24. Part of BAKUMI	37. BAKUMI - TRABZON - KARS - GUMRI (Rail)						
25. RAIL - BAKUMI	25. Part of BAKUMI	25. Part of BAKUMI	38. BAKUMI - TRABZON - KARS - GUMRI (Rail)						
26. RAIL - BAKUMI	26. Part of BAKUMI	26. Part of BAKUMI	39. BAKUMI - TRABZON - KARS - GUMRI (Rail)						
27. RAIL - BAKUMI	27. Part of BAKUMI	27. Part of BAKUMI	40. BAKUMI - TRABZON - KARS - GUMRI (Rail)						
28. RAIL - BAKUMI	28. Part of BAKUMI	28. Part of BAKUMI	41. BAKUMI - TRABZON - KARS - GUMRI (Rail)						
29. RAIL - BAKUMI	29. Part of BAKUMI	29. Part of BAKUMI	42. BAKUMI - TRABZON - KARS - GUMRI (Rail)						
30. RAIL - BAKUMI	30. Part of BAKUMI	30. Part of BAKUMI	43. BAKUMI - TRABZON - KARS - GUMRI (Rail)						
31. RAIL - BAKUMI	31. Part of BAKUMI	31. Part of BAKUMI	44. BAKUMI - TRABZON - KARS - GUMRI (Rail)						
32. RAIL - BAKUMI	32. Part of BAKUMI	32. Part of BAKUMI	45. BAKUMI - TRABZON - KARS - GUMRI (Rail)						
33. RAIL - BAKUMI	33. Part of BAKUMI	33. Part of BAKUMI	46. BAKUMI - TRABZON - KARS - GUMRI (Rail)						
34. RAIL - BAKUMI	34. Part of BAKUMI	34. Part of BAKUMI	47. BAKUMI - TRABZON - KARS - GUMRI (Rail)						
35. RAIL - BAKUMI	35. Part of BAKUMI	35. Part of BAKUMI	48. BAKUMI - TRABZON - KARS - GUMRI (Rail)						
36. RAIL - BAKUMI	36. Part of BAKUMI	36. Part of BAKUMI	49. BAKUMI - TRABZON - KARS - GUMRI (Rail)						
37. RAIL - BAKUMI	37. Part of BAKUMI	37. Part of BAKUMI	50. BAKUMI - TRABZON - KARS - GUMRI (Rail)						
38. RAIL - BAKUMI	38. Part of BAKUMI	38. Part of BAKUMI	51. BAKUMI - TRABZON - KARS - GUMRI (Rail)						
39. RAIL - BAKUMI	39. Part of BAKUMI	39. Part of BAKUMI	52. BAKUMI - TRABZON - KARS - GUMRI (Rail)						
40. RAIL - BAKUMI	40. Part of BAKUMI	40. Part of BAKUMI	53. BAKUMI - TRABZON - KARS - GUMRI (Rail)						
41. RAIL - BAKUMI	41. Part of BAKUMI	41. Part of BAKUMI	54. BAKUMI - TRABZON - KARS - GUMRI (Rail)						
42. RAIL - BAKUMI	42. Part of BAKUMI	42. Part of BAKUMI	55. BAKUMI - TRABZON - KARS - GUMRI (Rail)						
43. RAIL - BAKUMI	43. Part of BAKUMI	43. Part of BAKUMI	56. BAKUMI - TRABZON - KARS - GUMRI (Rail)						
44. RAIL - BAKUMI	44. Part of BAKUMI	44. Part of BAKUMI	57. BAKUMI - TRABZON - KARS - GUMRI (Rail)						
45. RAIL - BAKUMI	45. Part of BAKUMI	45. Part of BAKUMI	58. BAKUMI - TRABZON - KARS - GUMRI (Rail)						
46. RAIL - BAKUMI	46. Part of BAKUMI	46. Part of BAKUMI	59. BAKUMI - TRABZON - KARS - GUMRI (Rail)						
47. RAIL - BAKUMI	47. Part of BAKUMI	47. Part of BAKUMI	60. BAKUMI - TRABZON - KARS - GUMRI (Rail)						
48. RAIL - BAKUMI	48. Part of BAKUMI	48. Part of BAKUMI	61. BAKUMI - TRABZON - KARS - GUMRI (Rail)						
49. RAIL - BAKUMI	49. Part of BAKUMI	49. Part of BAKUMI	62. BAKUMI - TRABZON - KARS - GUMRI (Rail)						
50. RAIL - BAKUMI	50. Part of BAKUMI	50. Part of BAKUMI	63. BAKUMI - TRABZON - KARS - GUMRI (Rail)						
51. RAIL - BAKUMI	51. Part of BAKUMI	51. Part of BAKUMI	64. BAKUMI - TRABZON - KARS - GUMRI (Rail)						
52. RAIL - BAKUMI	52. Part of BAKUMI	52. Part of BAKUMI	65. BAKUMI - TRABZON - KARS - GUMRI (Rail)						
53. RAIL - BAKUMI	53. Part of BAKUMI	53. Part of BAKUMI	66. BAKUMI - TRABZON - KARS - GUMRI (Rail)						
54. RAIL - BAKUMI	54. Part of BAKUMI	54. Part of BAKUMI	67. BAKUMI - TRABZON - KARS - GUMRI (Rail)						
55. RAIL - BAKUMI	55. Part of BAKUMI	55. Part of BAKUMI	68. BAKUMI - TRABZON - KARS - GUMRI (Rail)						
56. RAIL - BAKUMI	56. Part of BAKUMI	56. Part of BAKUMI	69. BAKUMI - TRABZON - KARS - GUMRI (Rail)						
57. RAIL - BAKUMI	57. Part of BAKUMI	57. Part of BAKUMI	70. BAKUMI - TRABZON - KARS - GUMRI (Rail)						
58. RAIL - BAKUMI	58. Part of BAKUMI	58. Part of BAKUMI	71. BAKUMI - TRABZON - KARS - GUMRI (Rail)						
59. RAIL - BAKUMI	59. Part of BAKUMI	59. Part of BAKUMI	72. BAKUMI - TRABZON - KARS - GUMRI (Rail)						
60. RAIL - BAKUMI	60. Part of BAKUMI	60. Part of BAKUMI	73. BAKUMI - TRABZON - KARS - GUMRI (Rail)						
61. RAIL - BAKUMI	61. Part of BAKUMI	61. Part of BAKUMI	74. BAKUMI - TRABZON - KARS - GUMRI (Rail)						
62. RAIL - BAKUMI	62. Part of BAKUMI	62. Part of BAKUMI	75. BAKUMI - TRABZON - KARS - GUMRI (Rail)						
63. RAIL - BAKUMI	63. Part of BAKUMI	63. Part of BAKUMI	76. BAKUMI - TRABZON - KARS - GUMRI (Rail)						
64. RAIL - BAKUMI	64. Part of BAKUMI	64. Part of BAKUMI	77. BAKUMI - TRABZON - KARS - GUMRI (Rail)						
65. RAIL - BAKUMI	65. Part of BAKUMI	65. Part of BAKUMI	78. BAKUMI - TRABZON - KARS - GUMRI (Rail)						
66. RAIL - BAKUMI	66. Part of BAKUMI	66. Part of BAKUMI	79. BAKUMI - TRABZON - KARS - GUMRI (Rail)						
67. RAIL - BAKUMI	67. Part of BAKUMI	67. Part of BAKUMI	80. BAKUMI - TRABZON - KARS - GUMRI (Rail)						
68. RAIL - BAKUMI	68. Part of BAKUMI	68. Part of BAKUMI	81. BAKUMI - TRABZON - KARS - GUMRI (Rail)						
69. RAIL - BAKUMI	69. Part of BAKUMI	69. Part of BAKUMI	82. BAKUMI - TRABZON - KARS - GUMRI (Rail)						
70. RAIL - BAKUMI	70. Part of BAKUMI	70. Part of BAKUMI	83. BAKUMI - TRABZON - KARS - GUMRI (Rail)						
71. RAIL - BAKUMI	71. Part of BAKUMI	71. Part of BAKUMI	84. BAKUMI - TRABZON - KARS - GUMRI (Rail)						
72. RAIL - BAKUMI	72. Part of BAKUMI	72. Part of BAKUMI	85. BAKUMI - TRABZON - KARS - GUMRI (Rail)						
73. RAIL - BAKUMI	73. Part of BAKUMI	73. Part of BAKUMI	86. BAKUMI - TRABZON - KARS - GUMRI (Rail)						
74. RAIL - BAKUMI	74. Part of BAKUMI	74. Part of BAKUMI	87. BAKUMI - TRABZON - KARS - GUMRI (Rail)						
75. RAIL - BAKUMI	75. Part of BAKUMI	75. Part of BAKUMI	88. BAKUMI - TRABZON - KARS - GUMRI (Rail)						
76. RAIL - BAKUMI	76. Part of BAKUMI	76. Part of BAKUMI	89. BAKUMI - TRABZON - KARS - GUMRI (Rail)						
77. RAIL - BAKUMI	77. Part of BAKUMI	77. Part of BAKUMI	90. BAKUMI - TRABZON - KARS - GUMRI (Rail)						
78. RAIL - BAKUMI	78. Part of BAKUMI	78. Part of BAKUMI	91. BAKUMI - TRABZON - KARS - GUMRI (Rail)						
79. RAIL - BAKUMI	79. Part of BAKUMI	79. Part of BAKUMI	92. BAKUMI - TRABZON - KARS - GUMRI (Rail)						
80. RAIL - BAKUMI	80. Part of BAKUMI	80. Part of BAKUMI	93. BAKUMI - TRABZON - KARS - GUMRI (Rail)						
81. RAIL - BAKUMI	81. Part of BAKUMI	81. Part of BAKUMI	94. BAKUMI - TRABZON - KARS - GUMRI (Rail)						
82. RAIL - BAKUMI	82. Part of BAKUMI	82. Part of BAKUMI	95. BAKUMI - TRABZON - KARS - GUMRI (Rail)						
83. RAIL - BAKUMI	83. Part of BAKUMI	83. Part of BAKUMI	96. BAKUMI - TRABZON - KARS - GUMRI (Rail)						
84. RAIL - BAKUMI	84. Part of BAKUMI	84. Part of BAKUMI	97. BAKUMI - TRABZON - KARS - GUMRI (Rail)						
85. RAIL - BAKUMI	85. Part of BAKUMI	85. Part of BAKUMI	98. BAKUMI - TRABZON - KARS - GUMRI (Rail)						
86. RAIL - BAKUMI	86. Part of BAKUMI	86. Part of BAKUMI	99. BAKUMI - TRABZON - KARS - GUMRI (Rail)						
87. RAIL - BAKUMI	87. Part of BAKUMI	87. Part of BAKUMI	100. BAKUMI - TRABZON - KARS - GUMRI (Rail)						



TRACECA Master Plan

www.traceca-org.org/en/technical-assistance/traceca-regional-project-logistics-processes-and-motorways-of-the-sea-ii/master-plan/main-document

Search My TRACECA Login Home / Forum / Contact / Sitemap / Glossary English



TRACECA of 21 century



TRACECA | Countries | Routes | Investments | Events | News | Publications | Technical Assistance

Technical Assistance / Traceca Regional Project - Logistics Processes an... / Master Plan / Main Document

+ A - Countries

Traceca Regional Project - Logistics Processes and Motorways of the Sea II

- About the LOGMOS Project
- Newsletters
- Documents

Master Plan

Main Document

- Annex 1 – Improvement of Legal Environment
- Annex 2 – Trade Flow Potential
- Annex 3.1 – Maritime Sector
- Annex 3.2 – Shipping Lines
- Annex 4 – Railway Sector
- Annex 5 – Road Sector
- Annex 6.1 – Dnepr Case Study
- Annex 6.2 – Danube Case Study
- Annex 7 – Hinterland Connections, Multimodal and Logistics Capabilities
- Annex 8 – Pilot Project MCA
- Annex 9 – Country Profiles and Project Fiches
- Contact Us



ENPI 2011 / 264 459

Logistics Processes and Motorways of the Sea II

In Armenia, Azerbaijan, Georgia, Kazakhstan, Kyrgyzstan, Moldova, Tajikistan, Turkmenistan, Ukraine, Uzbekistan

Draft LOGMOS Master Plan

October 2013



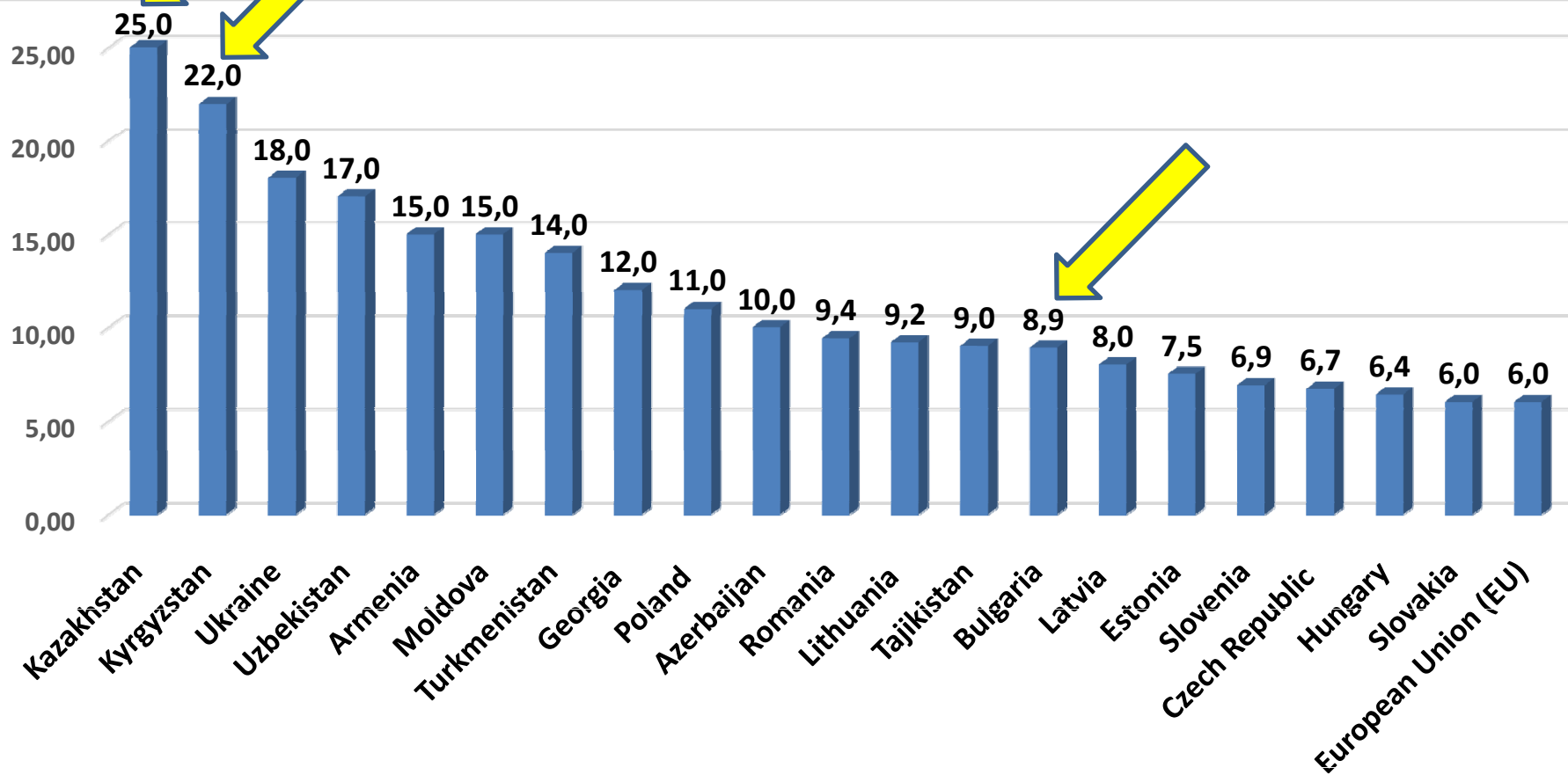
egisInternational

DORNIER



Accident Statistics

Deaths per 100 000 population in 2010





Regional Road Safety Action Plan in the TRACECA countries





Project funded by EU

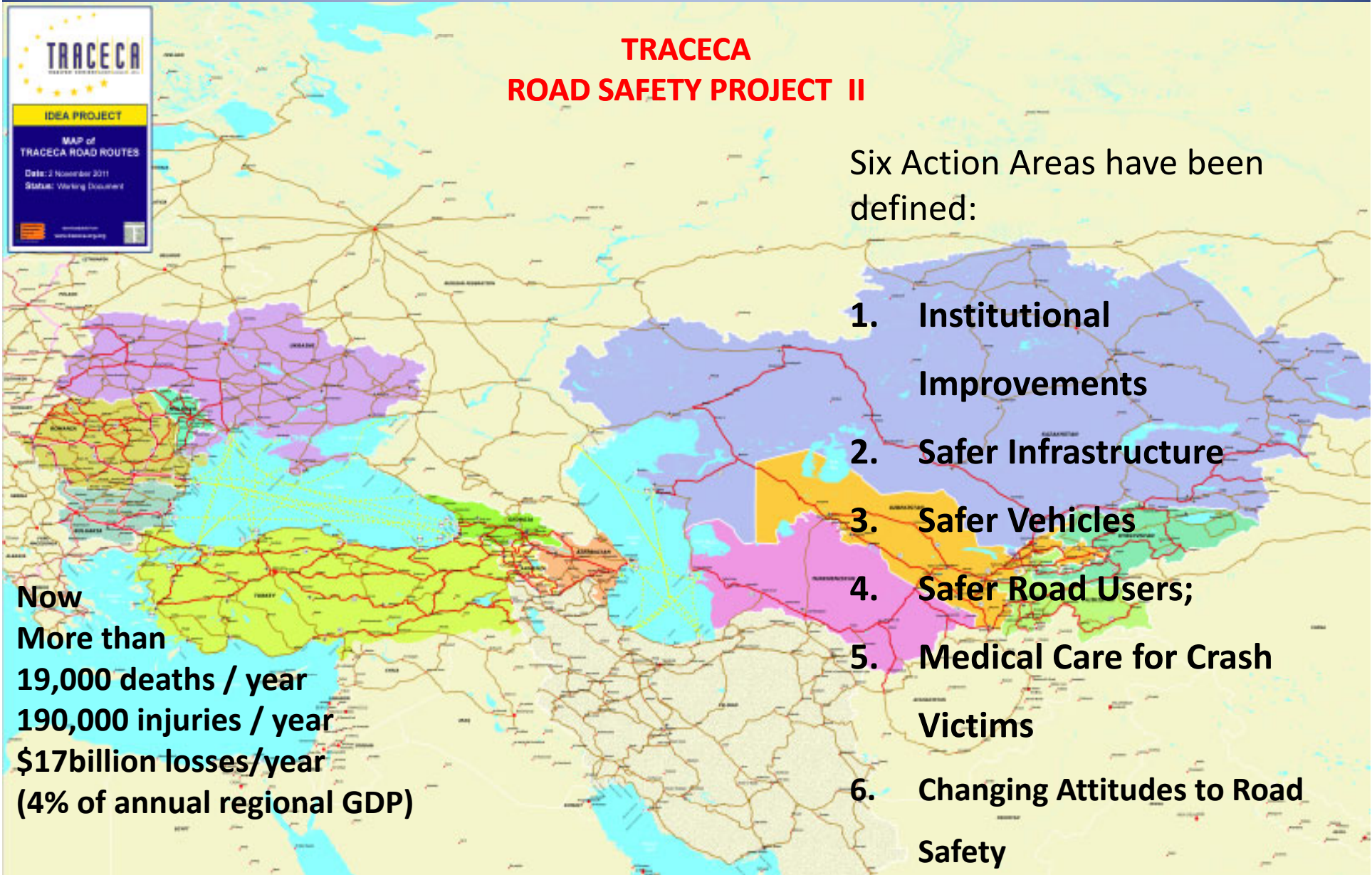


TRACECA ROAD SAFETY PROJECT II

Six Action Areas have been defined:

1. Institutional Improvements
2. Safer Infrastructure
3. Safer Vehicles
4. Safer Road Users;
5. Medical Care for Crash Victims
6. Changing Attitudes to Road Safety

Now
More than
19,000 deaths / year
190,000 injuries / year
\$17billion losses/year
(4% of annual regional GDP)





THANK YOU FOR ATTENTION

Mr. Mircea Ciopraga / Secretary General

Our contact details:

**Permanent Secretariat of the
Intergovernmental Commission TRACECA**

Azerbaijan, Baku, General Aliyarbekov street 8/2, AZ 1005 tel. :

(+994 12) 598 27 18 (+994 12) 498 64 26

e-mail: office@ps.traceca-org.org

website: www.traceca-org.org