

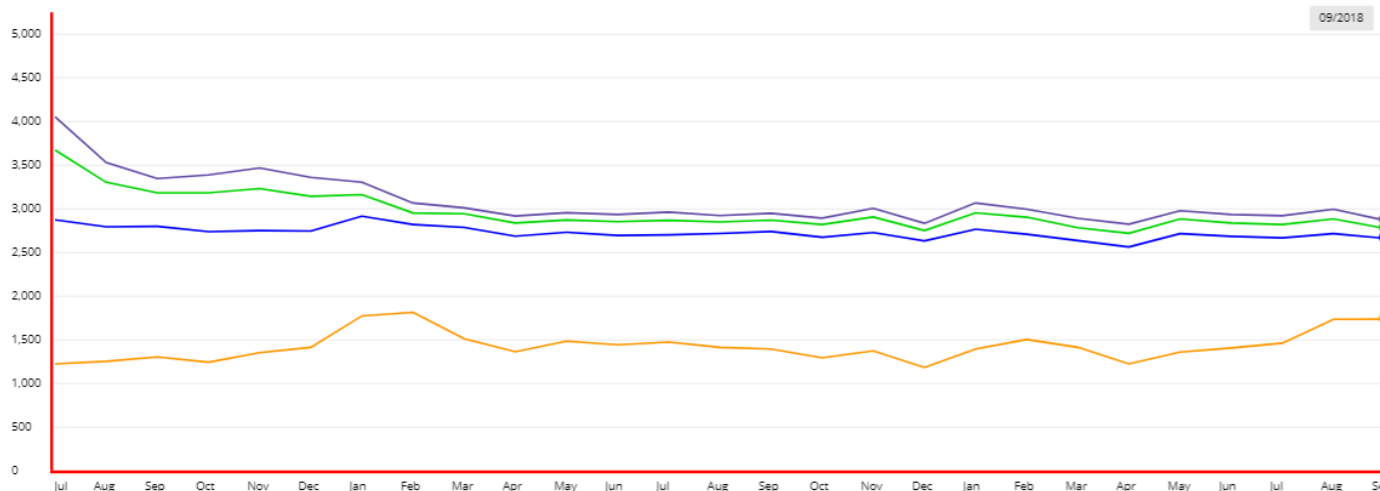
**ERAI**  
Eurasian Rail Alliance Index

**2,783.00** USD -107 -3.70% ▼

Transit time  
5,5 days

1 Year 2 Years **3 Years** 4 Years 5 Years

ERAI Composite Index ERAI U-East ERAI U-West WCI Drewry Freight turnover (x10)



**Main parameters of the index**

**Index measurement unit**

USD/FEU

**Routes**

Dostyk/Altynkol -  
Brest/Bruzhi/Svislach/Kaliningrad

**Transit time**

5,5 days  
target for 2025 - 3,5 days

**Average travelling speed**

930 - 1 020 km/day,  
target for 2020 - 1 500 km/day

**Index operator**

JSC UTLC ERA

**Update period**

Monthly

**Update procedure**

Analytics publication in English,  
Russian and Chinese

**ERAI U-East**  
2,667.00 USD -55 -2.02% ▼

**ERAI U-West**  
2,875.00 USD -127 -4.23% ▼

**WCI Drewry**  
1,743.00 USD +3 +0.17% ▲

**Freight turnover (x10)**  
27,680 TEU -470 -1.67% ▼

EURASIAN RAIL ALLIANCE INDEX (ERAI) is a composite indicator of the cost of transit container traffic in the Eurasian railway which connects China-EU and EU-china crossing the EEU territory.  
ERAI is published on the websites of international organizations (OSJD, CCTT, UIC, FIATA), analytical and media agencies (Drewry, Rail Freight).