



UNECE

UNECE Road Safety Statistics Dissemination

Working Party on Transport Statistics

Geneva, 12-14 June 2018

TRANSPORT





UNECE

- **Ongoing updates**

- UNECE Statistical Database - w3.unece.org/PXWeb/en

Use our new Android mobile app to get statistics both in English and Russian

Rankings Profiles Charts Maps PDF

GDP in millions of USD adjusted by purchasing power parities, year 2015

United States: 18 026 600 0 (mln. of USD)

Powered by Leaflet

Previous Next

Country Overviews
UNECE Member Countries in Figures

Population and Gender
Country Profiles
Work-life balance
Migration
Population
Fertility, families and households
Work and economy
Education
Public life and decision making
Health and mortality
Crime and violence
Science and ICT

Economy
Overview Tables
National Accounts
Labour Force & Wages
Price Indices
Industrial Production
External Economic Relations
Globalization Indicators

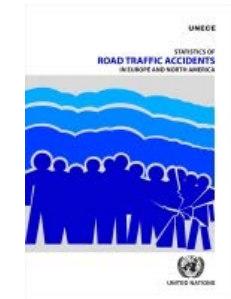
Millennium Development Goals
Poverty, Employment and Hunger (MDG 1)
Education Enrolment, Completion & Literacy (MDG 2)
Gender in Education, Employment & Politics (MDG 3)
Child Mortality and Immunization (MDG 4)
Maternal and Reproductive Health (MDG 5)
HIV/AIDS, Malaria and Tuberculosis (MDG 6)
Environment, Water & Sanitation (MDG 7)

Transport
Road Traffic Accidents
Railway Employment
Road Traffic
Road Vehicle Fleet
Railway Traffic
Railway Vehicles
Inland Waterway Traffic
Inland Waterway Vessels
Oil Pipeline Transport

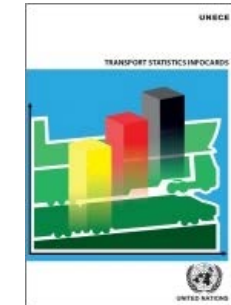
Forestry (FOREST EUROPE/UNECE/FAO)
Overview Tables
Forest Resources
Forest Health and Vitality
Productive Functions
Biological Diversity
Protective Functions
Socio-Economic Functions

- **Periodic Updates**

- **Statistics of Road Traffic Accidents in Europe and North America**



- **Transport Statistics Infocards**

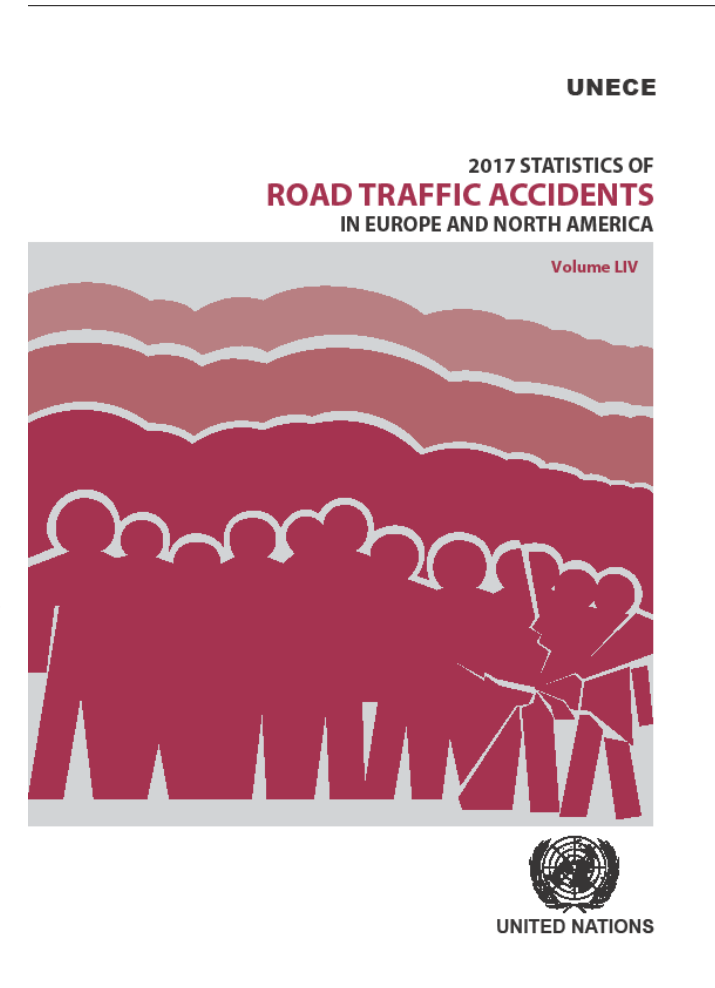


Statistics of Road Traffic Accidents in Europe and North America



UNECE

- **Based on data as available on website**
 - Questionnaires sent to countries in advance of publication
 - Most recent three years of data, with summary tables for ten years
- **Published every two years (2013, 2015, 2017...)**
 - English, French, Russian versions
- **Topics**
 - Accidents, injuries and fatalities
 - by location, time of occurrence, road condition, nature of accident, category of user, age group
 - gender breakdown added to 2017 publication
 - Background statistics on road vehicle fleet, road vehicle-kms and population by age group
 - Further discussion on expanding published and collected data



Transport Statistics Infocards



UNECE

Transport Statistics Infocard

GERMANY



• Area: 357,030 km² • Inhabitants: 82,491,000 (2016)

Contracting Party to 33 UN Transport Conventions under the purview of UNECE Inland Transport Committee. Contracting Party to 12 UN Road Safety Conventions.

Road and rail traffic

Number of passenger cars (thousand), 2015	45,071
Motorization rate (No. of passenger cars per thousand inhabitants), 2015	552
Passenger-km by road (million), 2014	999,590
Tonne-km by road (million), 2014	310,142
Passenger-km by rail (million), 2015	90,944
Tonne-km by rail (million), 2014	112,629
Tonne-km by Inland Waterways (million), 2015	55,315

Road casualty statistics

Fatalities, 2015	3,459
Injured, 2015	393,432
Injury accidents, 2015	305,659

Road deaths per

Million inhabitants, 2015	42
100,000 passenger cars, 2015	8

Severity of road traffic accidents

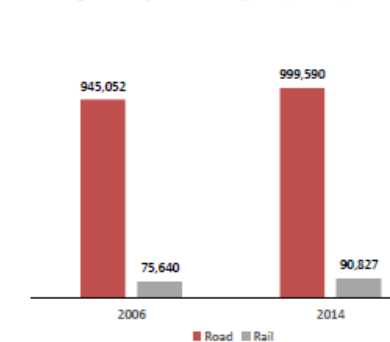
Fatalities per 1,000 injury accidents, 2015	11
---	----

- Based on data as available on website
- Published every year in advance of Inland Transport Committee meetings

• Topics

- Fatality and injury rate
- Motorization rate
- Passenger kilometres by transport mode
- Tonne kilometres by transport mode
- Others

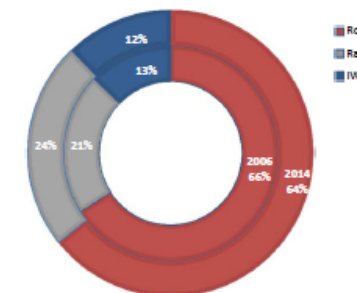
Passenger-km by road and by rail (million)



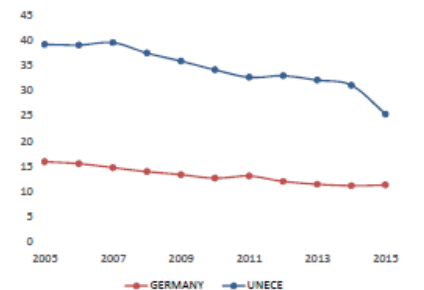
Fatalities per million inhabitants



Inland transport modal split - Freight (Tonne-km)



Severity of road traffic accidents (Fatalities per 1,000 injury accidents)



Source: UNECE Transport Statistics Database.

Note: For road safety graphics, UNECE refers to the average value of UNECE member States. IWW = inland waterways. - Not applicable / . Not available.

www.unece.org/trans/main/wp6/infocards.html





- **Part of series of articles on transport related SDGs**
 - Based on data from UNECE database
 - Indicators combined to show relationships at detailed levels
- **Road safety – first in series**
 - Gender differences
 - Age differences
 - Vulnerable road users
 - Trends since 2005
 - Relationship with road traffic activity

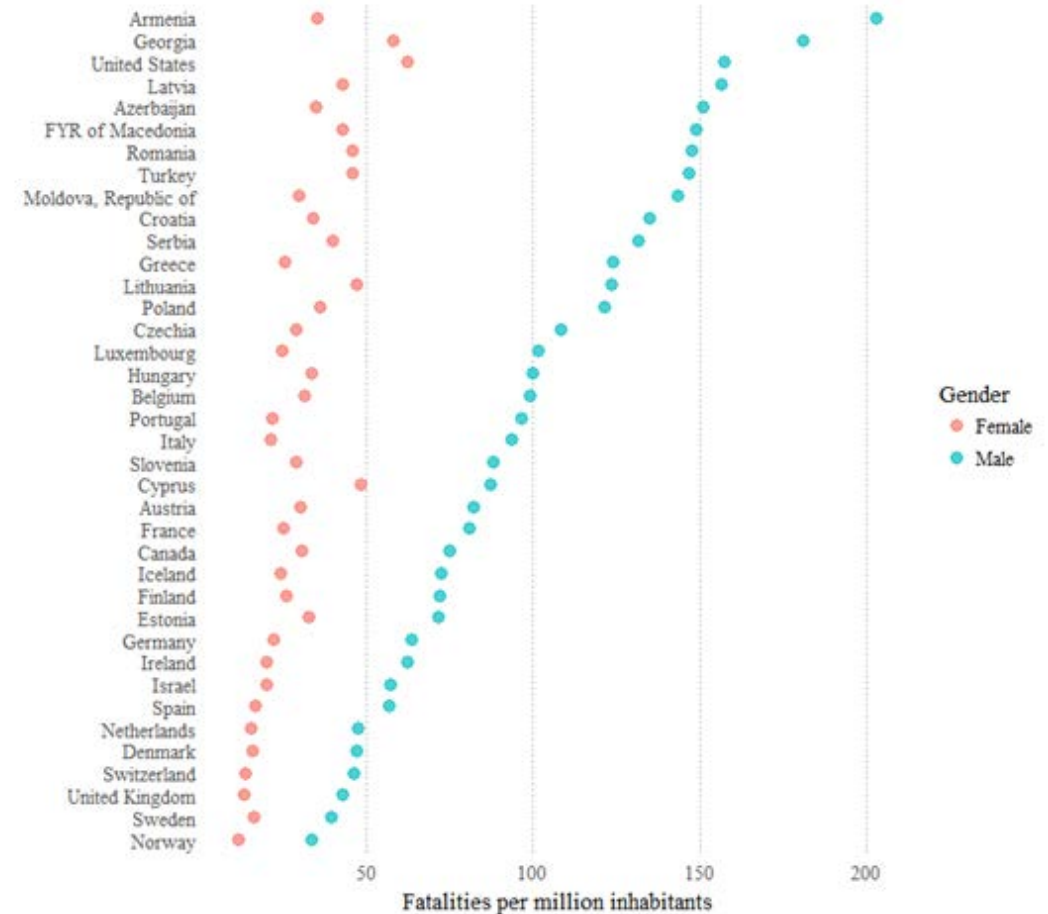
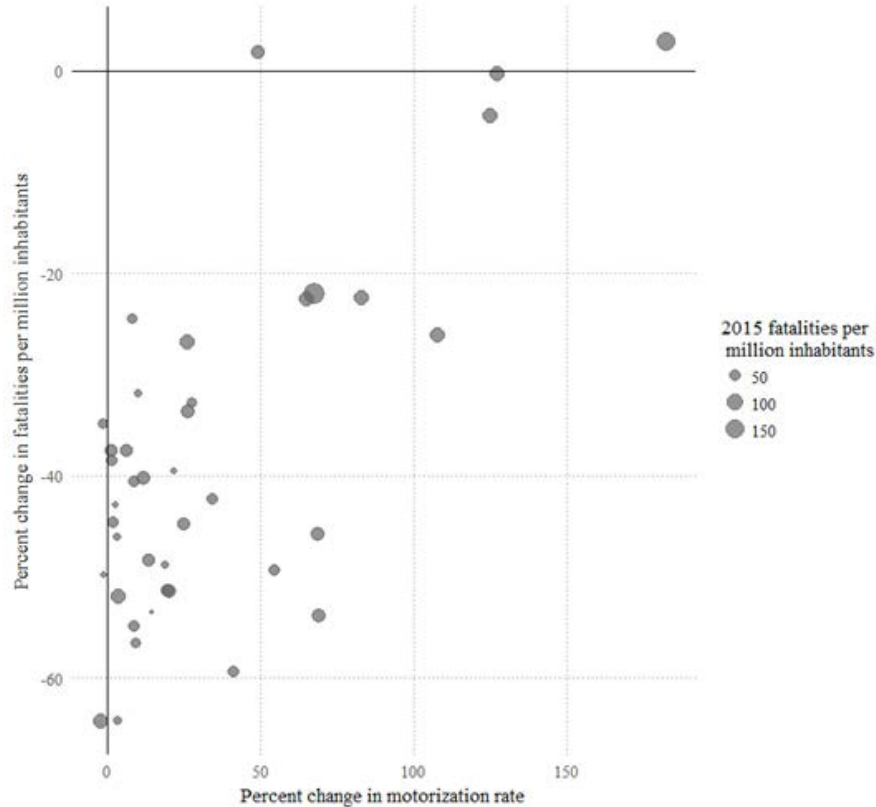


Assisting countries to monitor SDGs



UNECE

↑ motorization rates
≠
↑ road accident fatalities



Wide gender disparity in road accident fatalities

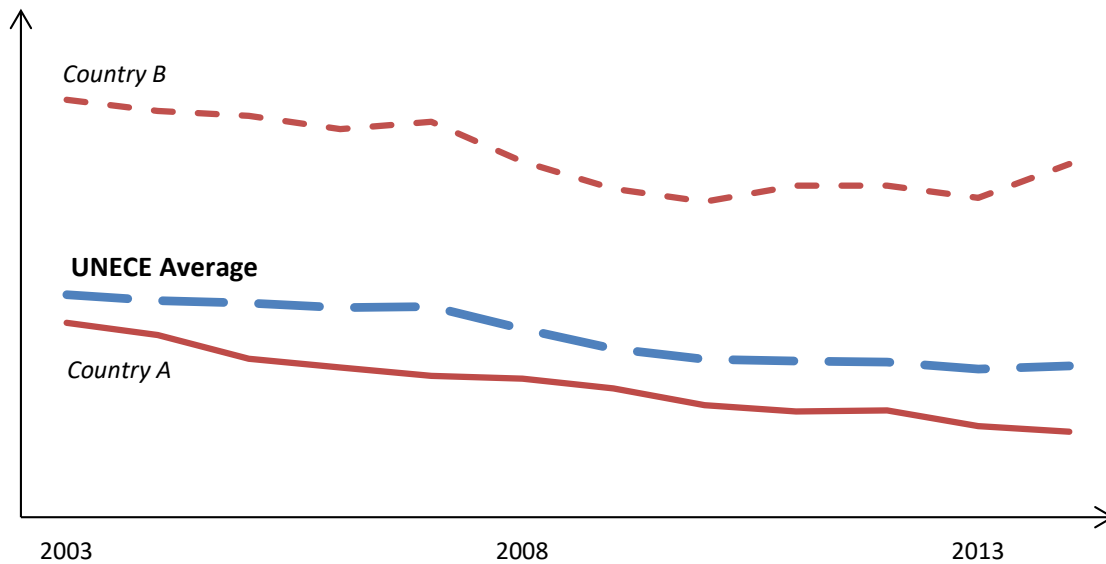
TRANSPORT



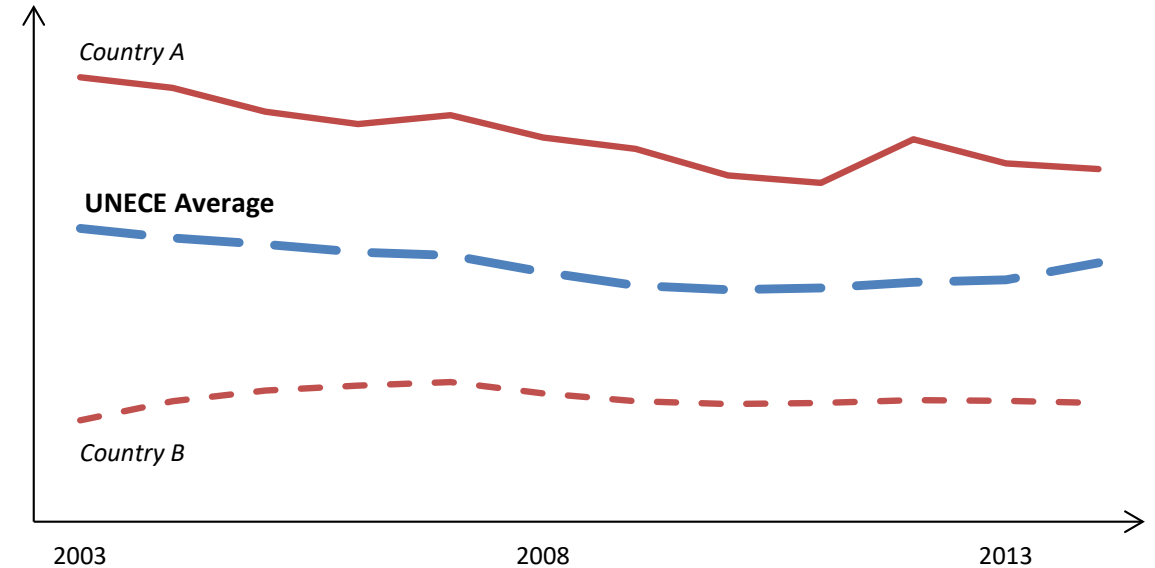


UNECE

Road accident fatalities per million inhabitants



Road accident injuries per million inhabitants



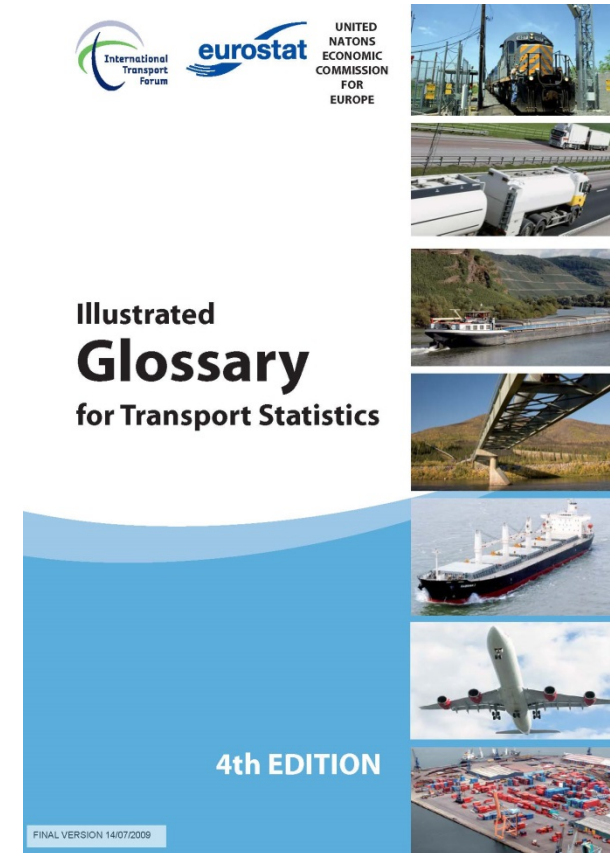
- Are road safety data from Countries A and B comparable?

- Higher accident severity in Country B? Differing definitions? Statistical capabilities?



Harmonization is a work in progress

- Common definitions in Eurostat/ITF/UNECE *Glossary for Transport Statistics*
 - Fifth revision ongoing – expected completion in early 2019
- Challenges remain in reporting road accident injuries in some countries
 - Different standards in place for administrative data,
 - Practical or even political reasons for other differences in data collection



www.unece.org/fileadmin/DAM/trans/main/wp6/pdfdocs/glossen4.pdf



UNECE

B.VI-01 Injury accident

Any accident involving at least one road vehicle in motion on a public road or private road to which the public has right of access, resulting in at least one injured or killed person.

- *A suicide or an attempted suicide is not an accident but an incident caused by a deliberate act to injure oneself fatally. However, if a suicide or an attempted suicide causes injury to another road user, then the incident is regarded as an injury accident.*
- *Included are: collisions between road vehicles; between road vehicles and pedestrians; between road vehicles and animals or fixed obstacles and with one road vehicle alone. Included are collisions between road and rail vehicles. Multi-vehicle collisions are counted as only one accident provided that any successive collisions happen within a very short time period. Injury accidents exclude accidents incurring only material damage.*
- *Excluded are terrorist acts.*





B.VI-05 Person killed

Any person killed immediately or dying within 30 days as a result of an injury accident, excluding suicides.

- *A killed person is excluded if the competent authority declares the cause of death to be suicide, i.e. a deliberate act to injure oneself resulting in death. For countries that do not apply the threshold of 30 days, conversion coefficients are estimated so that comparisons on the basis of the 30 day-definition can be made.*

B.VI-06 Person injured:

Any person who as result of an injury accident was not killed immediately or not dying within 30 days, but sustained an injury, normally needing medical treatment, excluding attempted suicides.

- *Persons with lesser wounds, such as minor cuts and bruises are not normally recorded as injured.*
- *An injured person is excluded if the competent authority declares the cause of the injury to be attempted suicide by that person, i.e. a deliberate act to injure oneself resulting in injury, but not in death.*





UNECE

Suggestions?

Comments?

Contact UNECE

stat.trans@unece.org

TRANSPORT

