

SUSTAINABLE
mobility™
FOR ALL

MOBILITY FOR THE FUTURE

WHO WE ARE

A global partnership platform of over 50 leading actors representing all modes of transportation with a shared ambition to achieve sustainable mobility



OUR SHARED VISION

A world where the global mobility system is an important part of the solution to addressing 21st century global challenges



OUR AMBITION

Transforming the global mobility system, across modes

POLICY GOALS



UNIVERSAL ACCESS

Connect all people, including women, and communities to economic and social opportunities.



EFFICIENCY

Optimize its predictability, reliability and cost-effectiveness



SAFETY

Drastically reduce fatalities, injuries, and crashes (SDG Target 3.6)



GREEN

Abate the environmental footprint of mobility (GHG emissions, noise and air pollution)

OUR GOALS

A sustainable mobility system



ASPIRATIONAL TARGETS

- **100%** access to transport in rural areas
- Rapid transit to resident ratio of **100 km/million**
- Females to represent **50%** of workforce in transport

- Logistics Performance Index score of **5**

- **Halve** the number of global deaths arising from road traffic crashes
- Reduce by **10 percent** the human fatalities in rail and maritime modes
- Achieve **zero** deaths in commercial passenger aviation.

- **Zero** transport-related GHG emissions per capita from domestic and international, road, rail, air and maritime transport
- **0%** annual exposure to PM 2.5 air pollution from all modes of transport
- Transport related noise levels not exceeding **50db**

WHERE ARE WE?



ADVOCACY

Global Tracking Framework

Global Mobility Report

Global Transport
Stakeholder Mapping

Our Global Presence

External Website

Monthly Newsletter



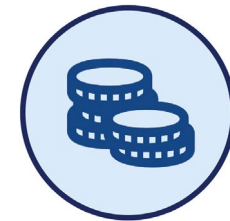
ACTION

Global Roadmap of Action
toward Sustainable Mobility

High level Policy Advisory
Council

SuM4All Projects

New Dialogue with Countries
and Private Sector on Mobility



FINANCING

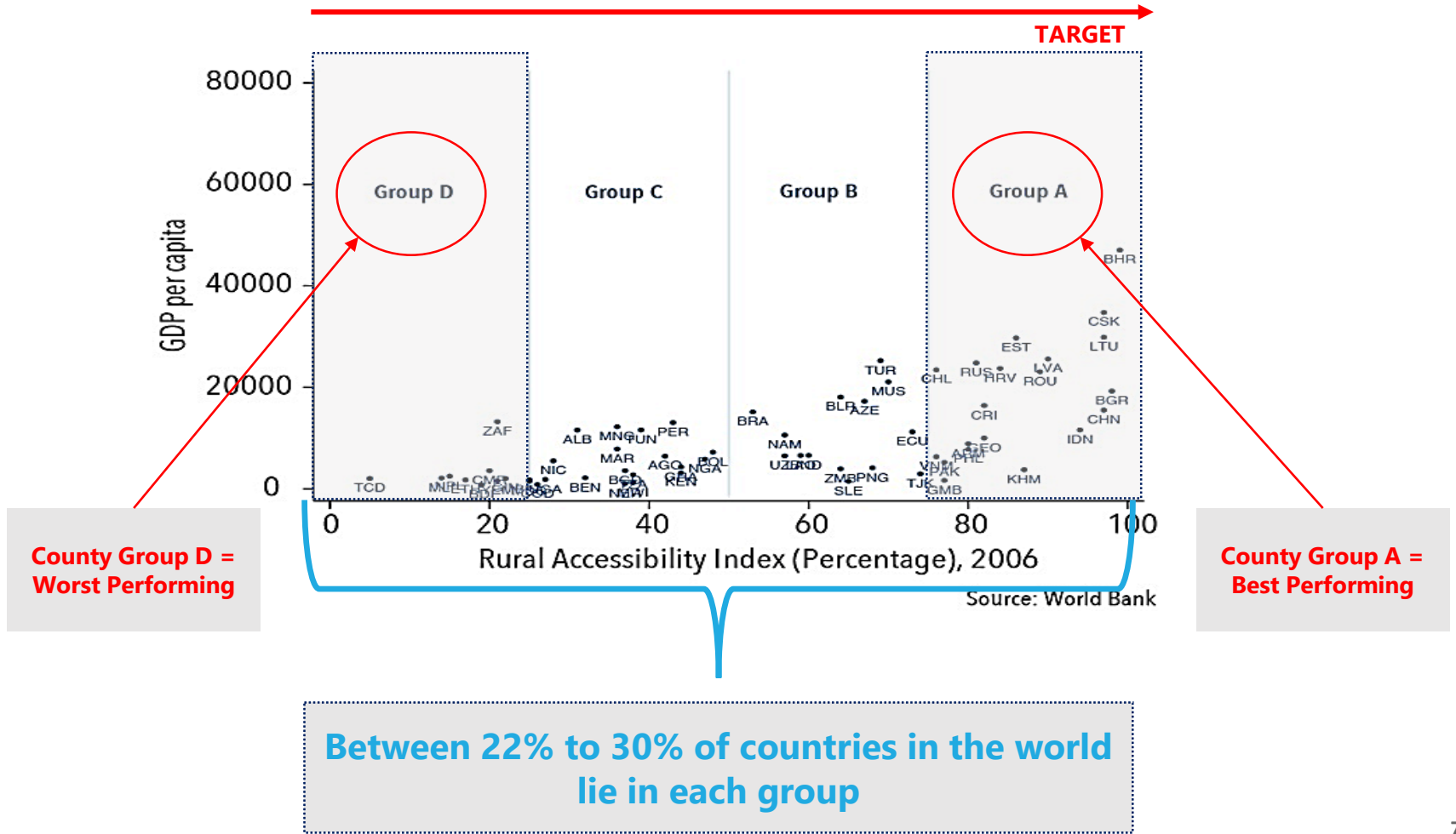
New Financing for
Sustainable Mobility

Green Climate Investment
Fund

Climate Investment Fund

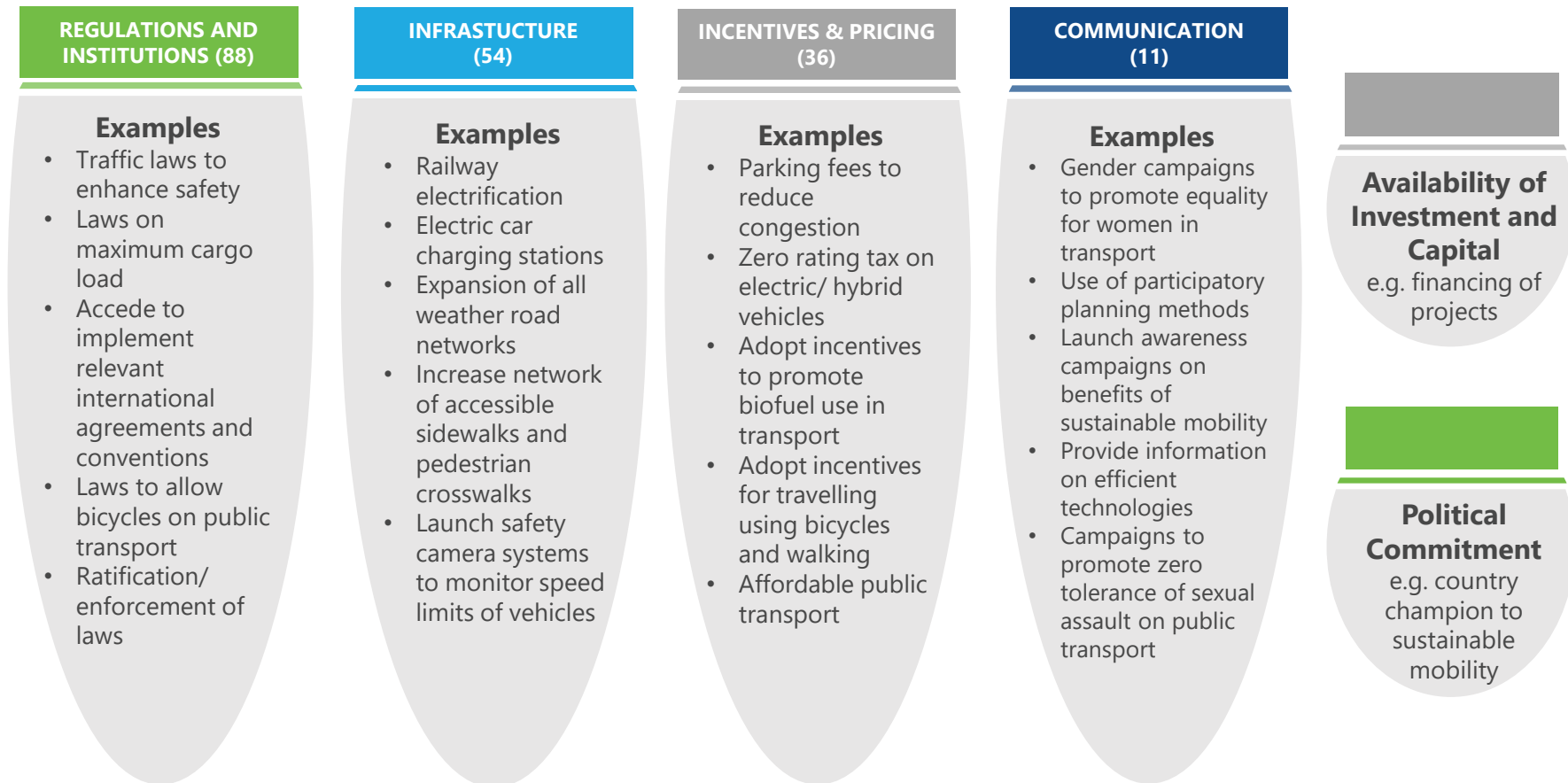
IMPERATIVE FOR ACTION

UNIVERSAL ACCESS (RURAL)



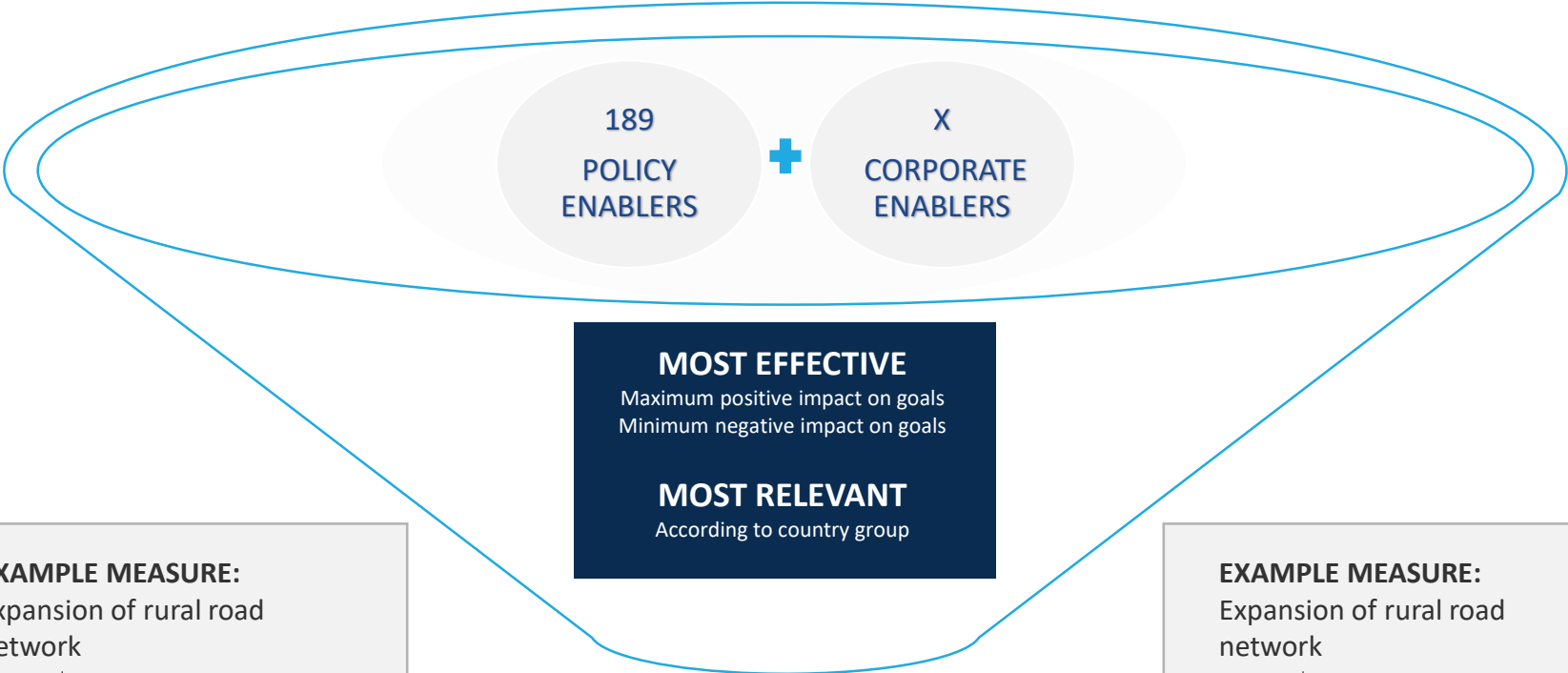
DEFINING THE ACTION LANDSCAPE

189 policy measures to transform the mobility system



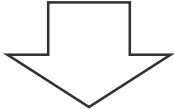
*These enablers are exclusively policy oriented. Enablers for corporate action and public-private collaboration will be updated after the consultation stage of GRA

FILTERING THE "ENABLERS"



EXAMPLE MEASURE:
Expansion of rural road network

GOAL	IMPACT
	++
	+
	-

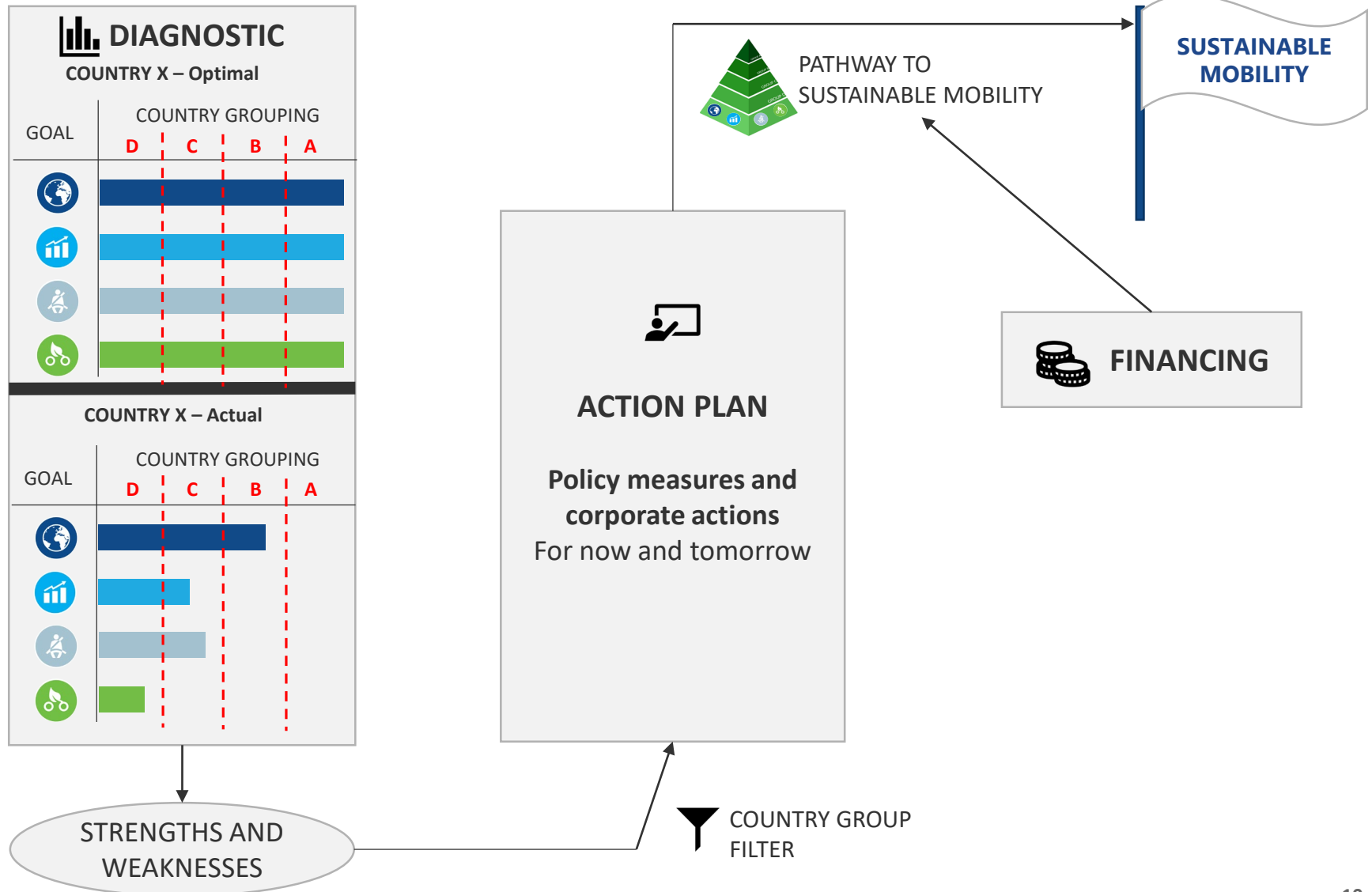


TOP 20 ENABLERS FOR EACH COUNTRY GROUP

EXAMPLE MEASURE:
Expansion of rural road network

GROUP	RELEVANCE
A	
B	×
C	× ×
D	× ×

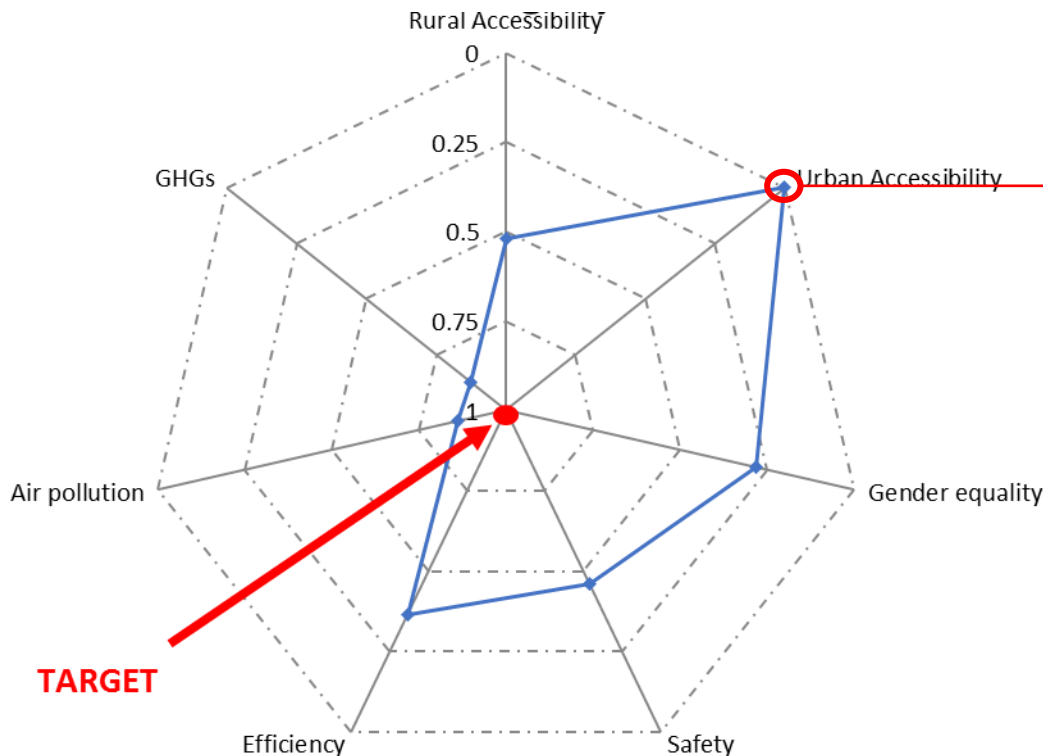
TRANSFORMING THE COUNTRY ENGAGEMENT



PATHWAYS TO SUSTAINABLE MOBILITY

COUNTRY X EXAMPLE

DIAGNOSTIC Sustainable Mobility Performance



Action Plan

Universal Urban Access

Priority Measures for Country Group D

Examples

- Affordable public transport fare
- Ensure physical integration between all modes, including public transport and bicycles
- Improve public transport coverage with a special emphasis on equitable access
- Increasing the network of accessible sidewalks
- Creating explicit policy for freight in urban areas
- Increase standards of public transport operations
- Implement vision zero policy for road safety
- Hire well-trained government transport and land use staff
- Implement awareness and behavior change (ABC) strategies
 - Design roads for lower speeds and enforce speed limits

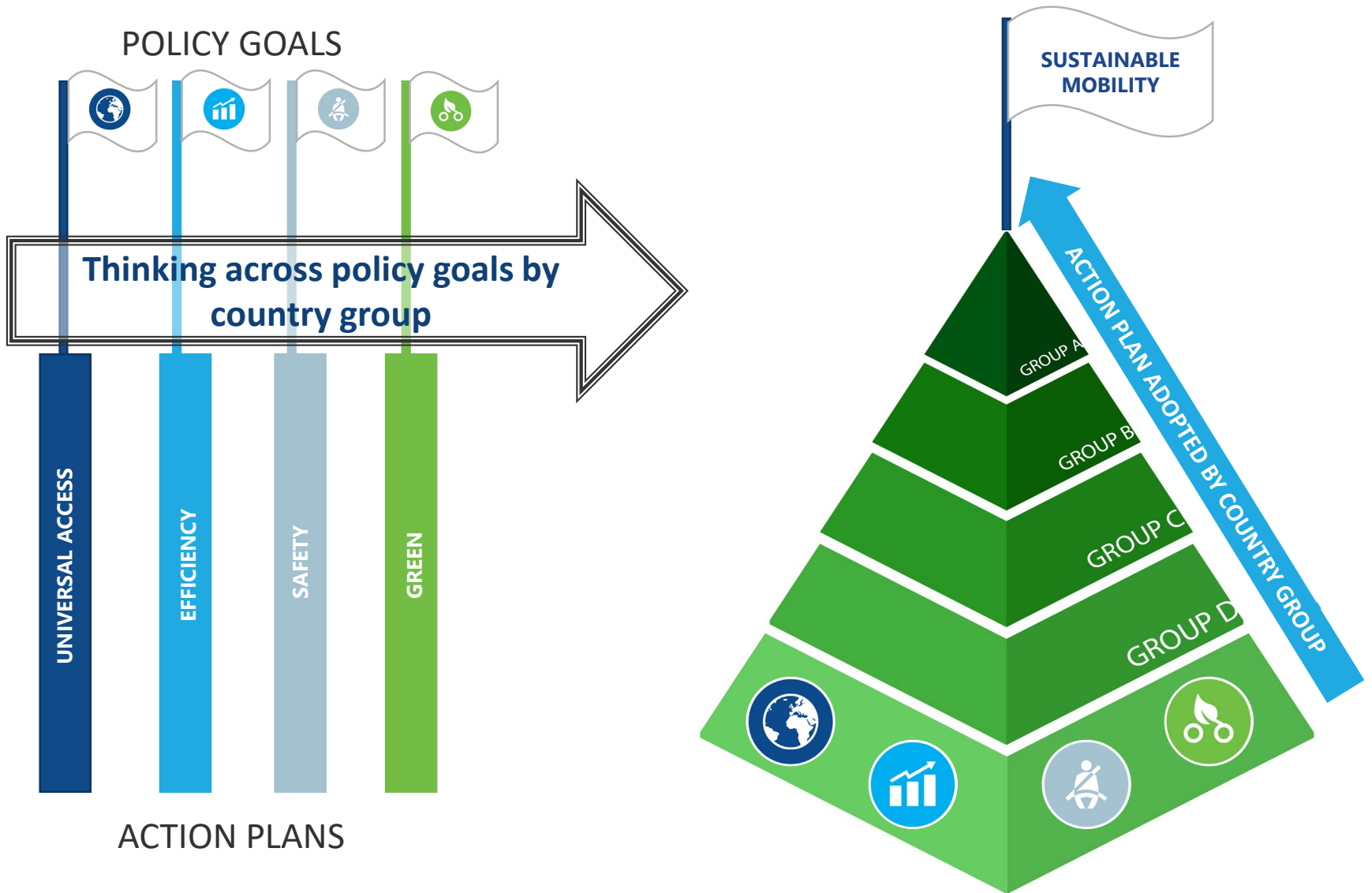
STRENGTHS: Country X is closer to the target in terms of green mobility (air pollution and GHG emission). It is at an intermediate level in terms of rural accessibility, efficiency and safety, but far from the goal in terms of urban accessibility and gender equality.

* 0 represents the largest distance to the goal and 1 representing the best performing country



ANNEX

ENABLERS FOR A SYSTEMIC CHANGE



OPENING UP **NEW SOLUTIONS**

- ✓ Mobility planning integrated (4 policy goals)
- ✓ “Optimal” cost-benefit project analysis
- ✓ Mobility-as-a-service (mode complementarity)
- ✓ Data collaboratives
- ✓ 6th Transportation mode
- ✓ Virtual mobility
- ✓ 30 new technology enhanced mobility system
- ✓ Shipping and aviation included
- ✓ Mobility to accelerate the energy transition



SUM4ALL PRODUCTS

OUR GLOBAL PRESENCE



2017
World Bank Annual Meetings
October 2017,
Washington DC, USA



2017
UN High Level Political Forum on Sustainable Development
July 2017,
New York, USA



2018
World Transport Convention
June 2018,
Beijing, China



2017-2018
International Transport Forum Summit
May 2017 & 2018,
Leipzig, Germany



2018
World Economic Forum Meetings
November 2018,
Dubai, UAE

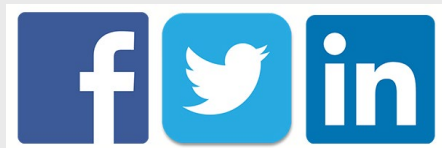
THE GLOBAL MOBILITY REPORT 2017

First-ever multi-agency assessment of the state of the mobility system, across modes and globally.

<http://www.sum4all.org/publications/global-mobility-report-2017>

3.1+ Million

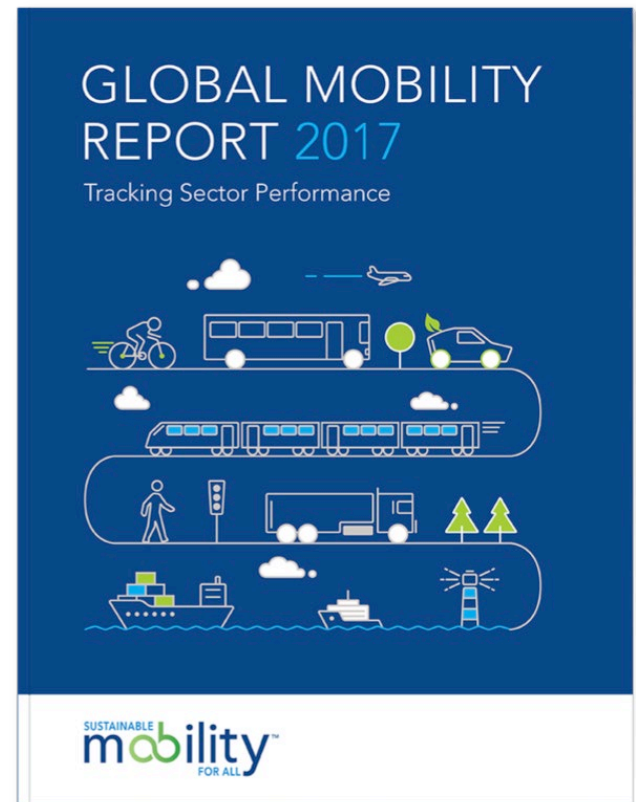
Potential Impressions



40+



News Outlets
Around the World



THE GLOBAL TRACKING FRAMEWORK

A multi-agency global dashboard to monitor country-level progress towards sustainable mobility and provide a basis for benchmarking


<http://www.sum4all.org/global-tracking-framework>

SOUTH AFRICA – COUNTRY SNAPSHOT

GDP (current US\$ million)	314,572	Region	Sub-Saharan Africa
Population, total thousand	54,957	Income Group	Upper middle income


UNIVERSAL ACCESS


Indicator	Year	Value	Median in	
			Region	Income Group
Quality of roads [rank]	2015	34	92	86.5
Quality of railroad infrastructure [rank]	2015	42	81.5	61
Quality of port infrastructure [rank]	2015	36	101	76
Quality of air transport infrastructure [rank]	2015	14	113	70.5
Railways, passengers carried (million passenger-km)	2014	14,689	178	1,702
Air transport, passengers carried	2015	17,188,888	438,556	1,970,751

	5.85	Quality of air transport infrastructure [value: 1 = worst to 7 = best]
	4.87	Quality of port infrastructure [value: 1 = worst to 7 = best]
	3.63	Quality of railroad infrastructure [value: 1 = worst to 7 = best]
	4.96	Quality of roads [value: 1 = worst to 7 = best]

EFFICIENCY

Indicator	Year	Value	Median in	
			Region	Income Group
Energy consumption of transport relative to GDP (PPP) (GOE per dollar)	2012	26	18.78	25.10
Logistics performance index - customs [value: 1 = low to 5 = high]	2016	3.60	2.31	2.39
Logistics performance index - customs [rank]	2016	18	115.0	102.5
Good governance index - Undue influence [value: 1 = worst to 7 = best]	2015	4	3.45	3.10
Good governance index - Undue influence value [rank]	2015	40	74	92
Liner Shipping Connectivity Index	2015	41	10.62	11.27

Air transport, freight (million ton-km)	
	2010 1,026
	2011 1,073
	2012 1,175
	2013 1,123
	2014 1,043

Container port traffic (TEU: 20 foot equivalent units)	
	2010 3,806,427
	2011 4,392,975
	2012 4,360,100
	2013 4,694,500
	2014 4,831,462

THE GLOBAL TRANSPORT STAKEHOLDER MAPPING

A mapping effort of the mobility system of more than 150 transport organizations and their influence globally and locally.

<http://www.sum4all.org/stakeholder-map>



The screenshot shows the SUM4ALL Stakeholder Mapping page for the European Cyclists' Federation (ECF). The page features the SUM4ALL logo and the ECF logo. It lists the organization's type as Global Civil Society Organizations, its sector as Active Transport, and its region as Global. Below this, it identifies the SUM4ALL Objectives Supported: Universal Access, Efficiency, Safety, and Green Mobility. The page also states the Main Objective and Impact Ambition of the Initiative: Supporting the Global Goals (Sustainable Development Goals), adopted by the General Assembly of the UN in September 2015 by ECF's and WCA's advocacy for and promotion of Cycling. Finally, it lists the SDG Supported, which includes goals 1, 2, 3, 5, 7, 8, 9, 10, 11, 12, 13, 15, 17, and 18.



THE SUM4ALL MONTHLY NEWSLETTER

Reporting on the latest advances on sustainable mobility, progress of the initiative and events.

More than 3800 subscribers across the world

<http://www.sum4all.org/news-blogs>



EXTERNAL WEBSITE

An external platform which is viewed by more than 1,000 users per month.

www.sum4all.org



THE GLOBAL ROADMAP OF ACTION TOWARD SUSTAINABLE MOBILITY

First-ever attempt to look across the four policy goals and identify policy and corporate actions that are most appropriate for countries relative to how they fare on mobility performances.

Co-created using an iterative process to ensure relevance, it lays out a pathway for planners, public decision-makers and the private sector to follow to further world's progress toward sustainable mobility.

<https://www.sum4all.org/global-roadmap-action>

