

**ECONOMIC COMMISSION FOR EUROPE**

Informal document WP.24 No.4 (2008)

**INLAND TRANSPORT COMMITTEE**

4 August 2008

Working Party on Intermodal Transport and  
Logistics

Fiftieth session  
Geneva, 6-7 October 2008

Item 4 of the provisional agenda

**ENGLISH ONLY**

---

**FIFTIETH SESSION OF THE WORKING PARTY:  
LOOKING BACK AND PEERING FORWARD**

1967 Catalogue of equipment used for combined transport

Note: The secretariat reproduces below excerpts of a catalogue of equipment used for combined transport that has been developed and maintained by the Working Party on Combined Transport in the 1960s.

The catalogue and the pictures below have been published by the UNECE in March and April 1967 in document W/TRANS/WP24/94 and Add.1. They provide an overview of the intermodal transport units (containers, swap bodies and semi-trailers) and transshipment equipment used in Europe and the United States 40 years ago.

---

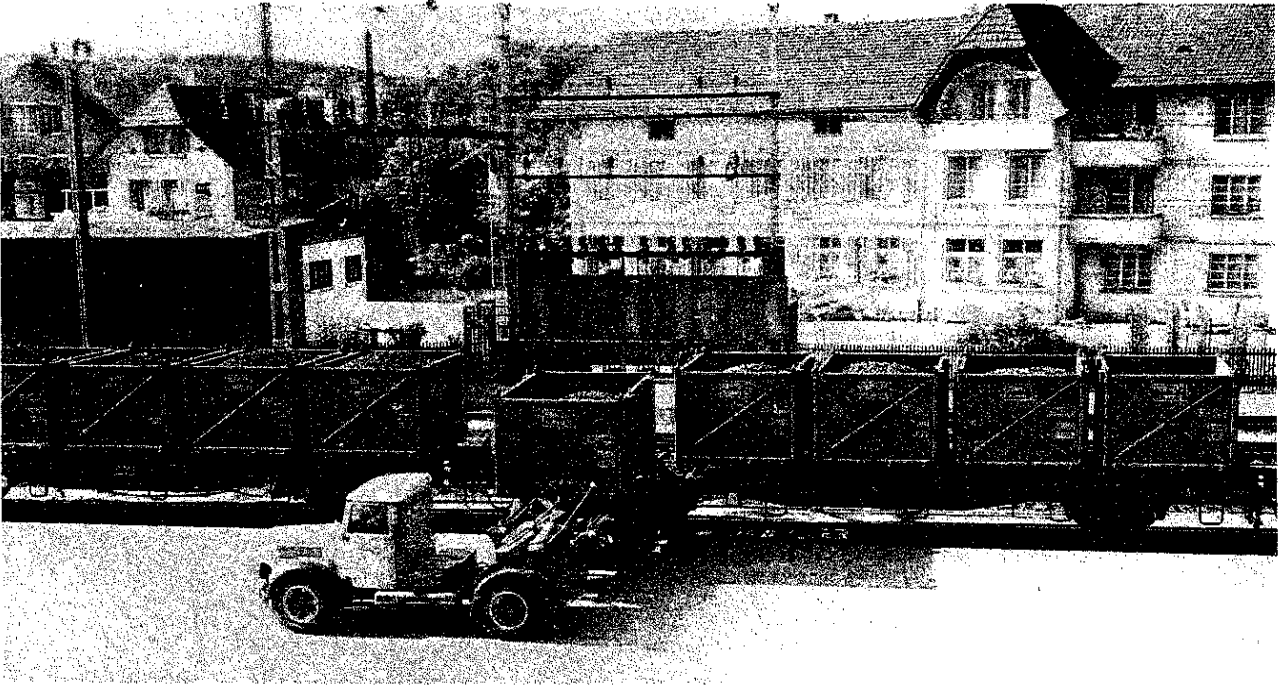


Fig. 5 - Suisse: grands containers "pa" ouverts

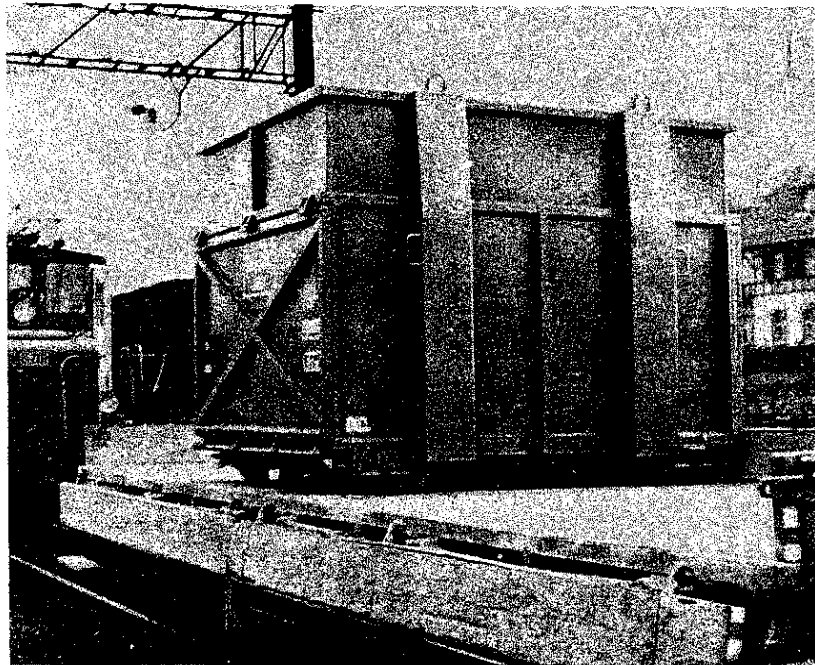


Fig. 6 - Suisse: grand container couvert muni de patins



Fig. 9 - France: grand container fermé (8m<sup>3</sup>)

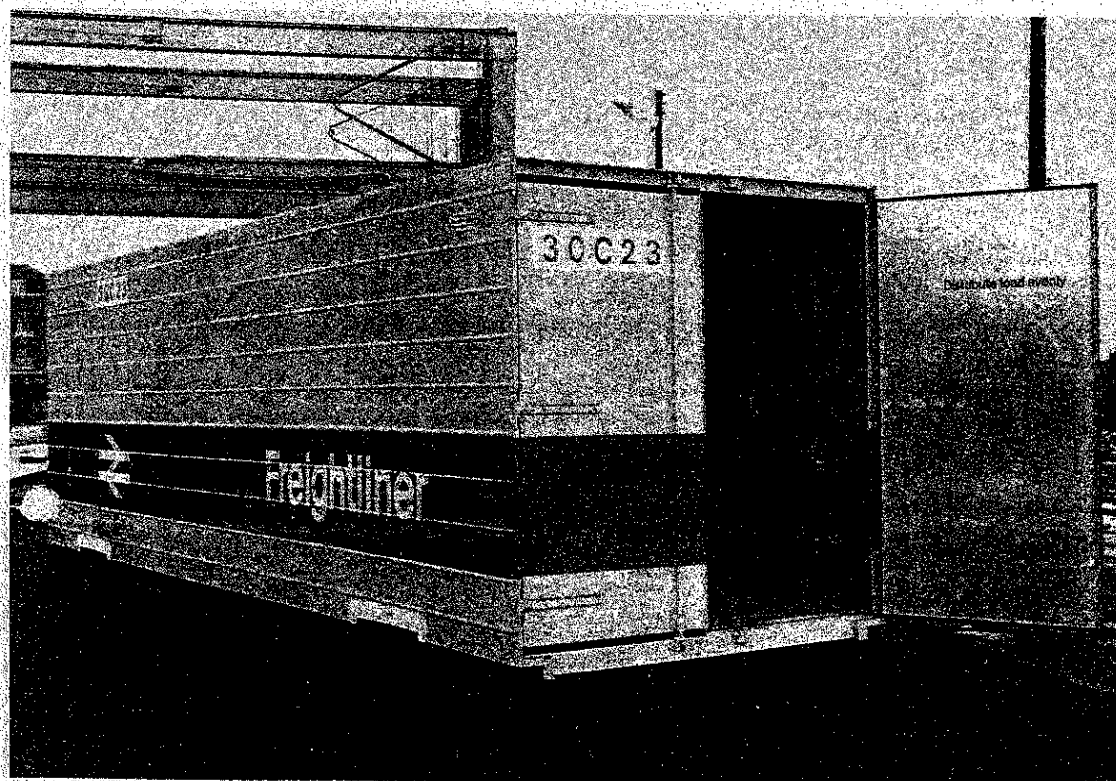


Fig. 10 - Grande-Bretagne: grand container fermé de 30,5 m<sup>3</sup> (Freightliner)



Fig. 11 - URSS: manutention à la grue d'un grand container de 5 t. de charge utile

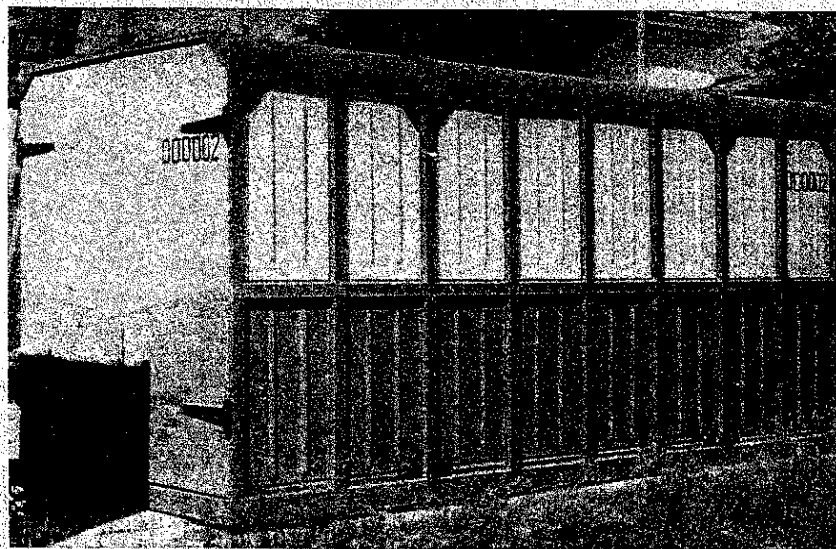


Fig. 12 - USSR: grand container fermé de 20 t. de charge utile



Fig. 13 - Suède: grand container "pa" fermé

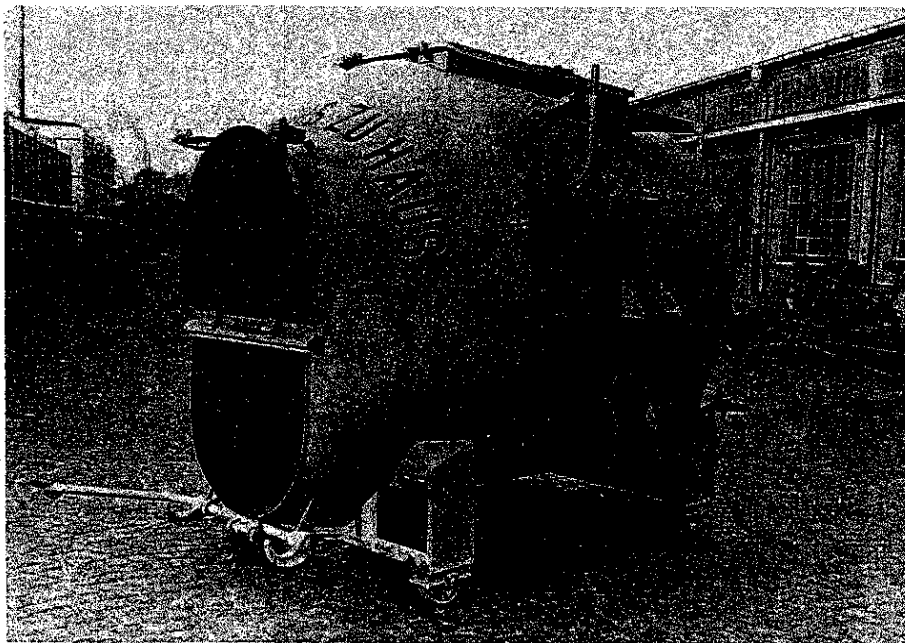


Fig. 14 - République fédérale d'Allemagne: grand container "pa" pour marchandises pulvérulentes

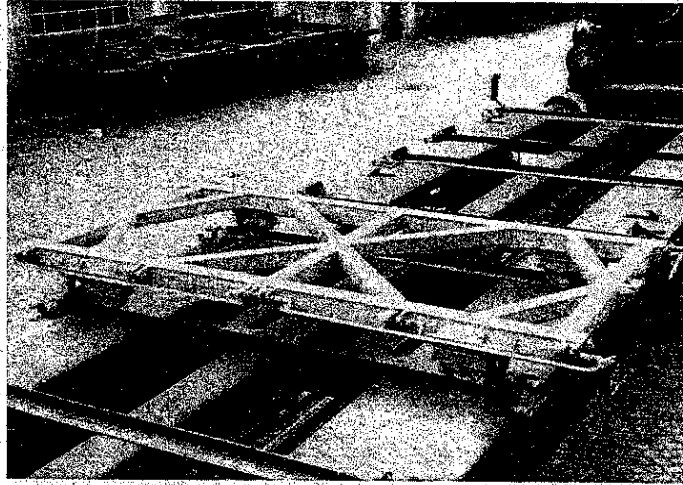


Fig. 59 - République fédérale d'Allemagne: accessoire de roulement "pa",  
dénommé "rollbock"

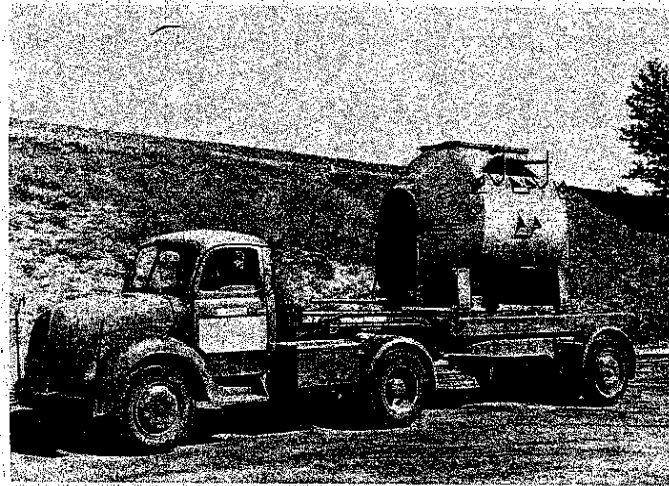


Fig. 60 - République fédérale d'Allemagne: véhicule routier spécial  
transportant un grand container "pa" pour marchandises pulvérulentes

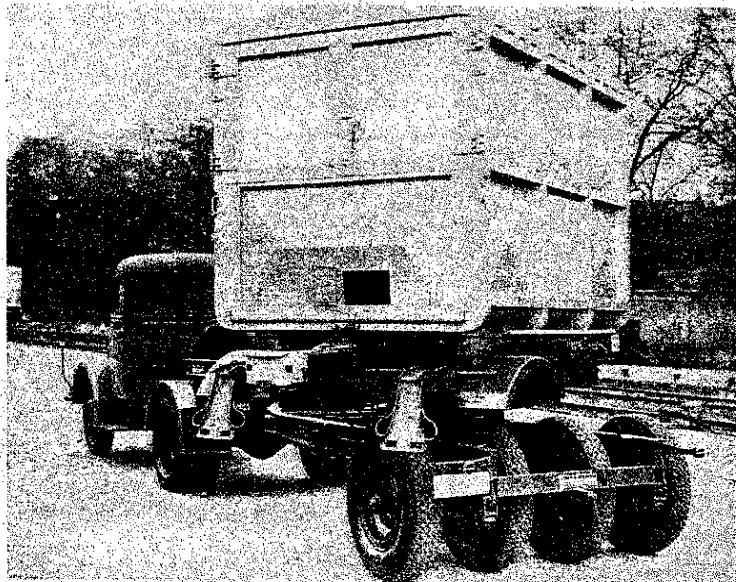


Fig. 61 - Suède: véhicule routier spécial conçu pour la livraison  
des grands containers "pa"

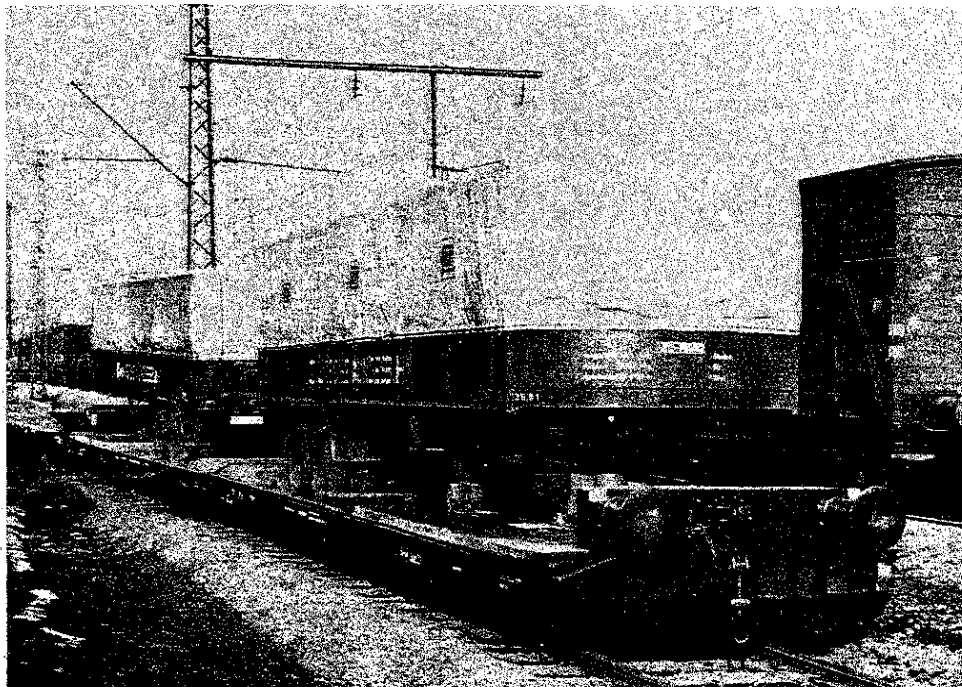


Fig. 82 - République fédérale d'Allemagne : wagon à plate-forme surbaissée du type "Aachen"

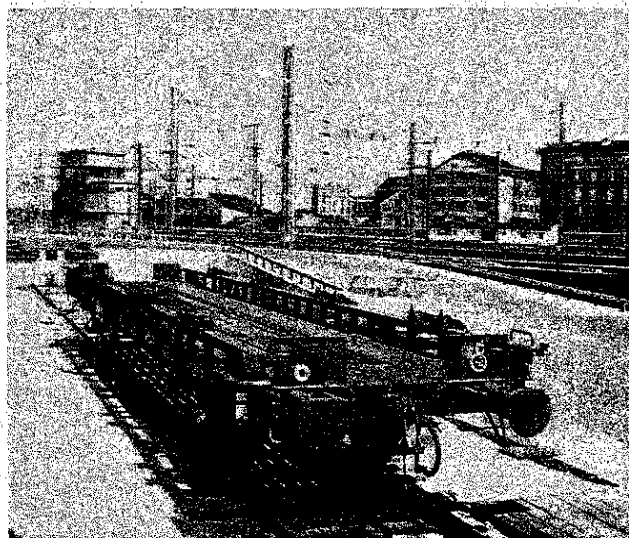


Fig. 83 - France : wagon porteur conçu pour le transport des semi-remorques "U.F.R."



Fig. 94 - Suède : grue à portique fixe



Fig. 95 - Grande-Bretagne : grue roulante à portique équipée de 4 roues pneumatiques pour le transbordement des Freightliners





Fig. 3. Driver has pivoted tractor using nose wheel. When tractor is at a right angle to the trailer the nose wheel is raised and tractor backs up until it is as close as possible to the flat-car. The driver extends hydraulic ram to push trailer on flat-car.



Fig. 4. Four 20 foot containers, operating under the Flexi-Van system, on an 85 foot rail flat-car.

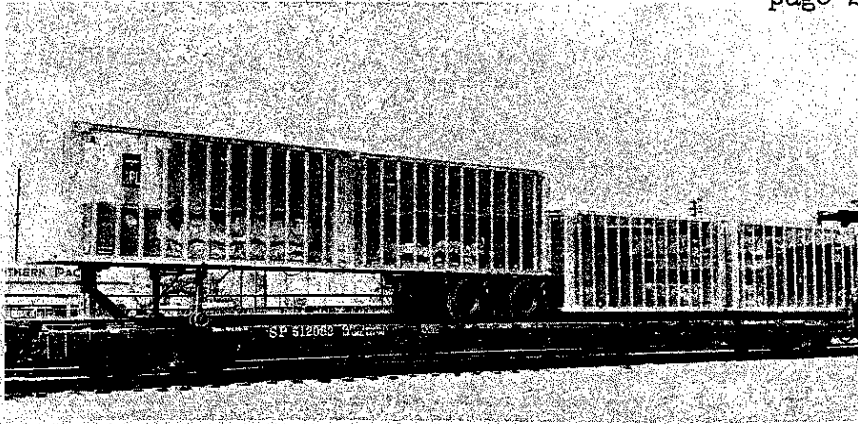


Fig. 28. A G-85 flat-car used simultaneously for container and piggy-back transport.

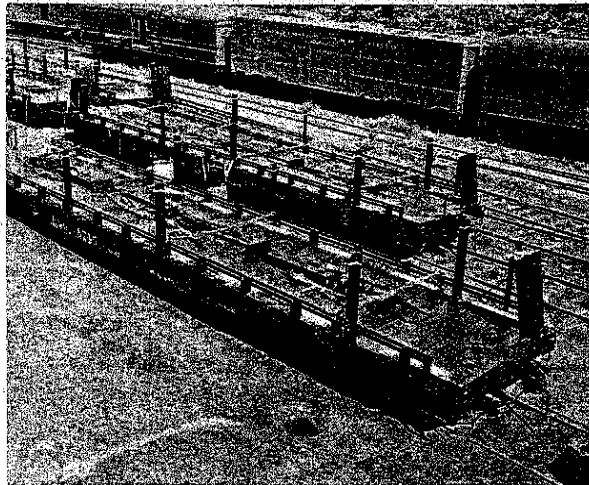


Fig. 29. B. and O. Railway - Wagon equipped for piggy-back service.\*

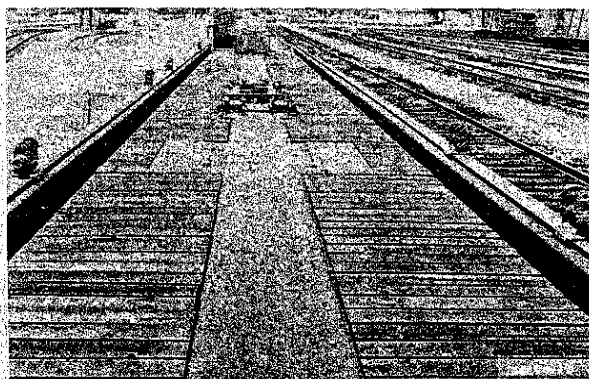


Fig. 30. A.T. and S.F. Railway - Wagon equipped for piggy-back service.\*

\* By courtesy of "Railway Age".