



UN/CEFACT

SIMPLE, TRANSPARENT AND EFFECTIVE PROCESSES
FOR GLOBAL BUSINESS

BUSINESS REQUIREMENTS SPECIFICATION (BRS)

Business domain: Agriculture

Business process: cattle registration information exchange

Document identification: CEFACT/Forum/2008

Title : electronic bovine animal registration exchange

UN/CEFACT International Trade and Business Processes Group: TBG 18

Version draft: 1.0

Release: November 12 2008

Document Change history log

Date of change	Version	Paragraphs changed	Summary of changes
16/07/2008	0.1	Initial document	
31/10/2008	0.2	5.2.2 5.3 5.4	<p>Comment of the September meeting in Lyon:</p> <p>Scope is specified to approved certified document;</p> <p>Use case diagram is extended with 3th country import export and a link to eCERT.</p> <p>The activity diagrams are adjusted.</p> <p>The class diagrams are redesigned. More classes are defined to meet requirements of other livestock business processes.</p>
12/11/2008	0.3		Class diagrams modified according tbg17 specs (black diamonds
12/11/2008	1.0	Final version	Approved by TBG 18.

Business Requirements Specification

Table of contents

1	PREAMBLE	4
2	REFERENCES	4
3	OBJECTIVE	5
4	SCOPE	6
5	BUSINESS REQUIREMENTS	7
5.1	Business requirements view	7
5.2	Business process elaboration	7
5.3	Information flow definition (activity diagram, description)	11
5.4	Information model definition (class diagram)	17
5.5	Business Information Entities	37
5.6	Business rules	37
5.7	Definition of terms	37

1 Preamble

The objectives of this document is

- Harmonization of the definitions of the technical data in order :
 - to speak the same language
 - to be able to exchange information between heterogeneous Information Systems
- Development of consensual data dictionaries which could to be used as a basis for all use in livestock farming
- Installation of a standardized animal registration data message to facilitate the transmission of information between cattle registration offices in case of international life animal movements
- Development and installation of an electronic animal passport.

The purpose of this document is to define the animal registration data exchange processes for all animal registration offices, and the development and installation of an electronic animal passport, using the UN/CEFACT Modeling Methodology (UMM) approach and Unified Modeling Language to describe and detail the business processes and transactions involved.

The structure of this document is based on the structure of the UN/CEFACT Business Requirements Specification (BRS) document reference CEFACT/ICG/005.

2 References

UN/CEFACT Modelling Methodology User Guide (CEFACT/TMG/N093)

UN/CEFACT Business Requirement Specification Document Template (CEFACT/ICG/005)

UN/CEFACT E-CERT BRS

UN/CEFACT E-DAPLOS BRS

3 Objective

The objective of this document is to standardize the Business Processes, the Business Transactions and the Information Entities of the technical description and information of the bovine livestock farming.

The Business Process is the detailed description of the way partners intend to play their respective role, establish business relationship and share responsibilities to interact efficiently with the support of their respective information system.

The business documents are composed of Business Information Entities (BIE), which when available, are taken from the library of reusable business information entities and when not found, are proposed as new Business Information Entities. The contents of the business documents and the Business Information Entities are presented using class diagrams.

4 Scope

This section describes the extent and limits of the business process within the information chain being described in this document. The class diagram of the import / export cattle registration and of electronic animal passport has been developed to specify the cross border exchange of information to enable business information to be re-used. It includes business information entities specifically required by governmental regulators as cattle registration, cross border animal transport.

Categories	Description and Values
Business Process	Cattle registration information exchange process Electronic animal passport
Product Classification	Livestock animal data
Industry Classification	Agricultural sector
Geopolitical	Global
Official Constraint	European Regulations National regulation Local applicable regulation
Business Process Role	Cross border animal registration regulation
Supporting Role	None
System Capabilities	Agreed level of security to protect data integrity

The cattle registration information exchange process is used between cattle registration offices and with EU authorities, in case of the international movement of bovine animals.

The electronic animal passport is used by inspectors of authorities to identify and verify individual animals. The electronic animal passport is a special type of an e-Certificate.

5 Business requirements

5.1 Business requirements view

The cattle registration information exchange contains two basic cases, the intent to export or the import notification. The process is started by the exporting country registration office, or by the importing country registration office. In both cases the information exchange is based on the same basic message.

The electronic passport is an e-certificate. A livestock inspector can request the animal passport data from his own (national) cattle registration office. In case the animal is not in the national database the cattle registration office can request and retrieve the data from the issuing cattle registration office.

The core information load is equal to the core information exchange between the cattle registration offices. The electronic animal passport can be used both on national and international level.

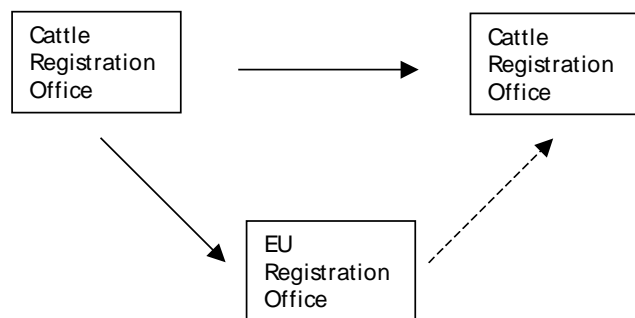
5.2 Business process elaboration

5.2.1 the cattle registration office information exchange

Scope:

This process details the mutual cattle registration data transmission between the cattle registration offices and the administrative partners like authorities (Min of Agriculture, EU-Traces).

The cattle registration data is created by the cattle registration office and is send to another administrative partner in cattle registration issues.



Principles

If a bovine animal is moved from one country to another (export – import) the registration data of this animal has to be transferred from the cattle registration office in the exporting country to the cattle registration office of the importing country. Part of this information can be transferred to EU authorities.

Use case: Cattle registration information exchange

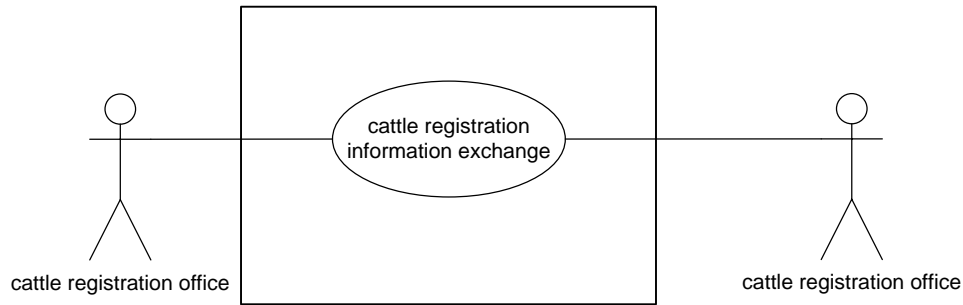


Figure 1a: Use case diagram

Use case description

Business process name	Cattle registration information exchange
Identifier	CRIE
Actors	Cattle registration offices, authorities
Description	The exporting cattle registration office sends the cattle registration data to the importing cattle registration office, and optionally to the EU authority.
Pre-condition	No obligation to set up a precondition
Post-conditions	Success: the cattle registration office sends the data of the exported animal. Failure: the data of the animal is not transferred. The animal registration in the national database is not updated.
Scenarios	Intent to export Notification of import
Remarks	

5.2.2 the electronic animal passport

Scope:

This process details the verification of animal to the cattle registration office and the administrative partners like authorities, by a veterinarian inspector, by an approved certified official document.

Principles

The inspector can request the data of the animal, issued by the national cattle registration office. The registration office submits the data, in case the animal is in the national registration. In case of an animal which is on an international transport or is imported, registration office retrieves the data from the registration office of the export country. If the country is unknown, the tracing will start in the country the animal is born.

The electronic animal data is certified by the registration office. The electronic animal data retrieval can be equivalent to the paper animal passport information.

Use case: electronic passport

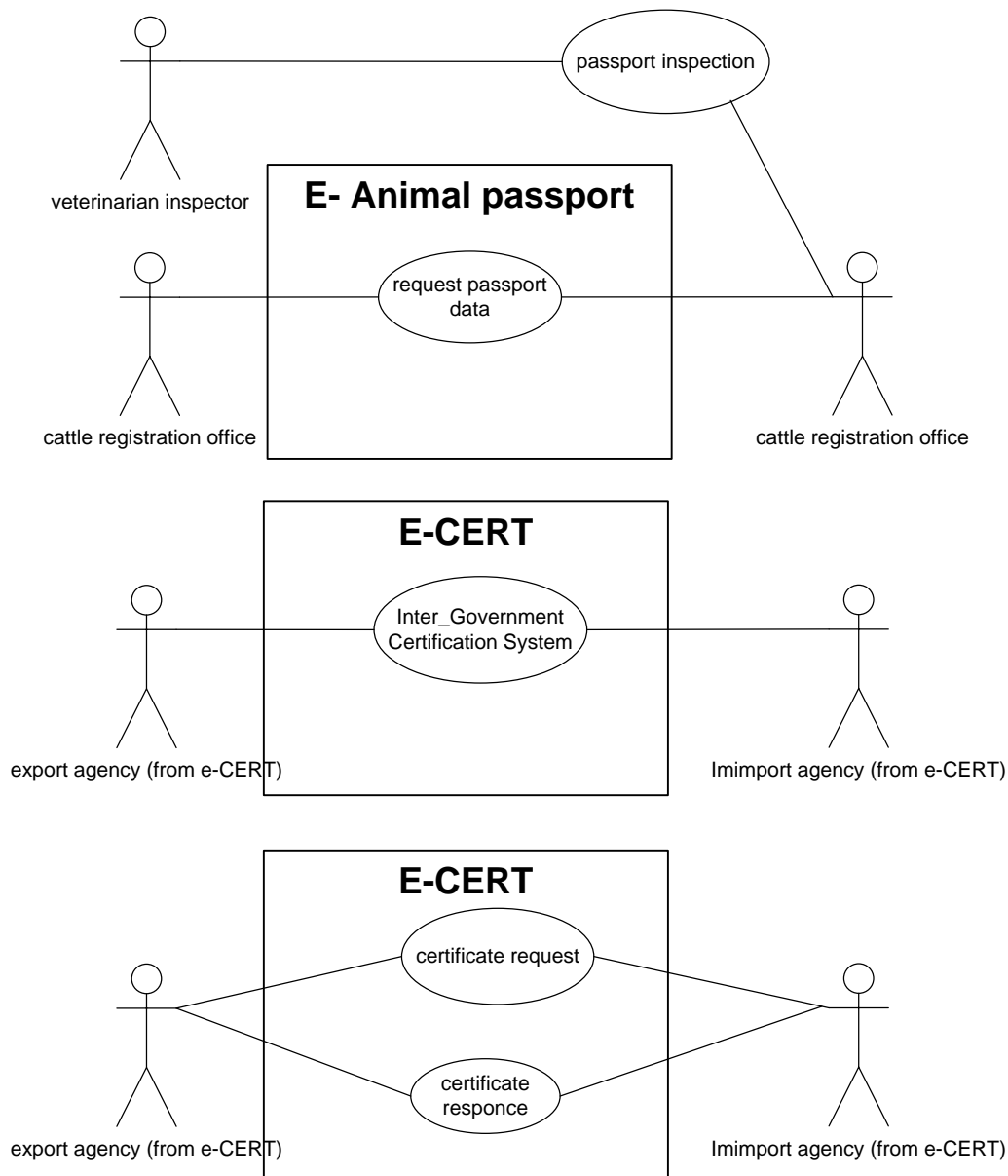


Figure 1b: Use case diagram animal passport and e-CERT

Use case description

Business process name	Electronic Animal Passport
Identifier	EAP
Actors	Inspectors, Cattle registration offices, Authorities
Description	<p>The inspector requests animal identification information from the Cattle Registration Office. The CRO issues the information to the inspector. In case the CRO is not the original issue office, the CRO will retrieve the passport information from the CRO who issued the passport.</p> <p>In the e-CERT process the animal passport is the document to describe and identify the 'product' as a part of the inter government certification system</p>
Pre-condition	No obligation to set up a precondition
Post-conditions	<p>Success: the electronic passport data is available for the inspector</p> <p>Failure: The identification of the animal can not be completed by use of the electronic animal passport</p>
Scenarios	Request for electronic animal passport data
Remarks	

5.3 Information flow definition (activity diagram, description)

The cattle registration office information exchange

The activity diagram allows identifying all the significant information flows between the cattle registration offices and their partner.

Activity Diagrams

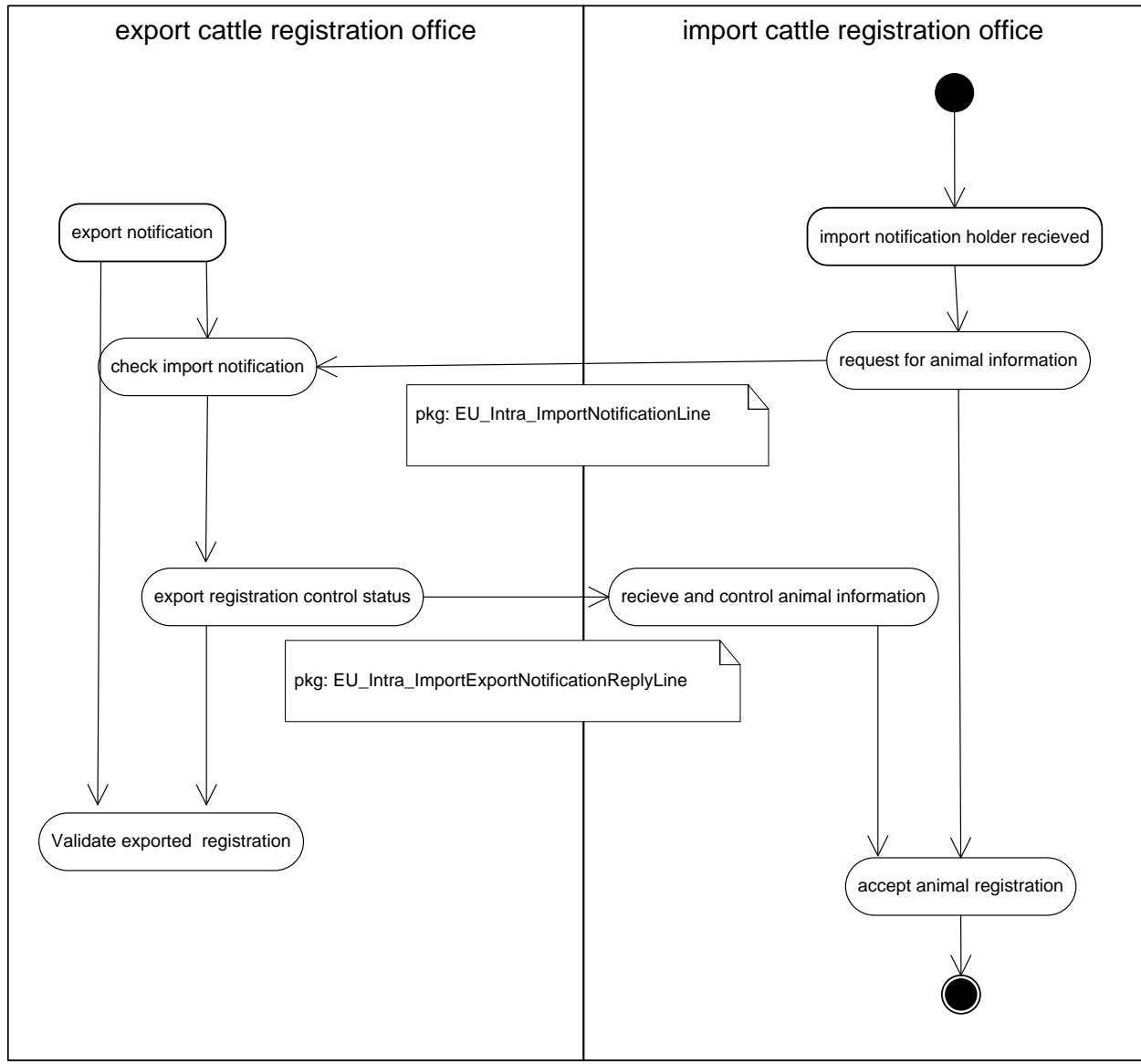


Figure 2a: Activity diagram information process import notification

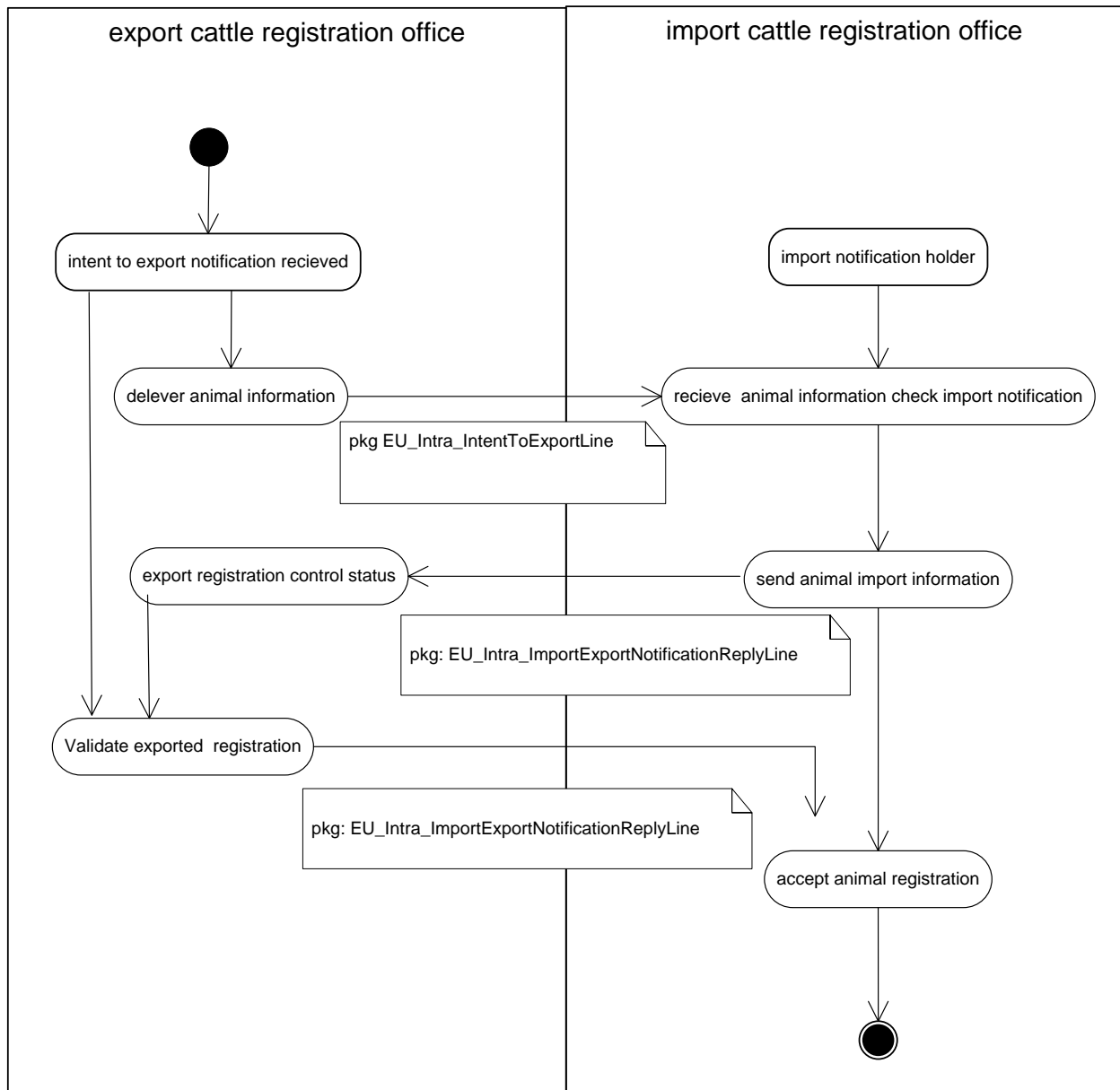


Figure 2b: Activity diagram- information process intent to export

Activity diagram description:

Import notification.

The holder of the animal notifies the cattle registration office about the arrival of the imported animal. The cattle registration office sends a import notification message with a request for the animal data to the cattle registration office of the country of export. The exporting cattle registration office checks the animal data about the export and replies to the importing cattle registration office by sending import notification status message and animal information. Both cattle registrations can update their registration. The export cattle registration office can close

the file of the exported animal. The importing registration office checks the received status and animal data and accept the animal registration.

Intent to export.

The exporter of the animal informs the cattle registration office about his intent to export the animal. The cattle registration office sends a export notification message, including animal data, to the cattle registration office in the country of import.

The holder of the animal in the importing country informs his cattle registration office about the arrival of the imported animal. This cattle registration office checks the arrival information with the received export notification message. Then it sends an export notification status message including animal data to the exporting cattle registration office. The exporting cattle registration office verifies the export and replies with an export notice status message including animal data. Both cattle registrations can update their registration. The export cattle registration office can close the file of the exported animal. The importing registration office checks the received status and animal data and accepts the animal registration.

Business collaboration

Business collaboration	
Identifier	Cattle registration office information exchange
Description	<p>a. The importing cattle registration office sends a notification of import message and receives an import notification status message. or</p> <p>b. The exporting cattle registration office sends an intent to export message. The importing cattle registration office sends an import notification status message, and receives an import notification status message.</p> <p>After completing and checking these messages the export cattle registration office closes the file of the exported animal. The import cattle registration office registers the animal.</p>
Partners types	Cattle Registration Office Administrative partners (authorities regional registration offices, EU Traces, EU Sanref)
Authorized Roles	Cattle Registration Office
Legal Steps/Requirement	None
Economic consequences	None
Initial/Terminal Events	

Scope	Initial: the Cattle Registration Office sends a import notification message or an intent to export message. Terminal: the Cattle Registration Offices updates the animal registration
Boundary	None
Constraints	None

The electronic animal passport

The activity diagram allows identifying all the significant information flows between the veterinarian inspector, the cattle registration offices and their partner.

Activity Diagram

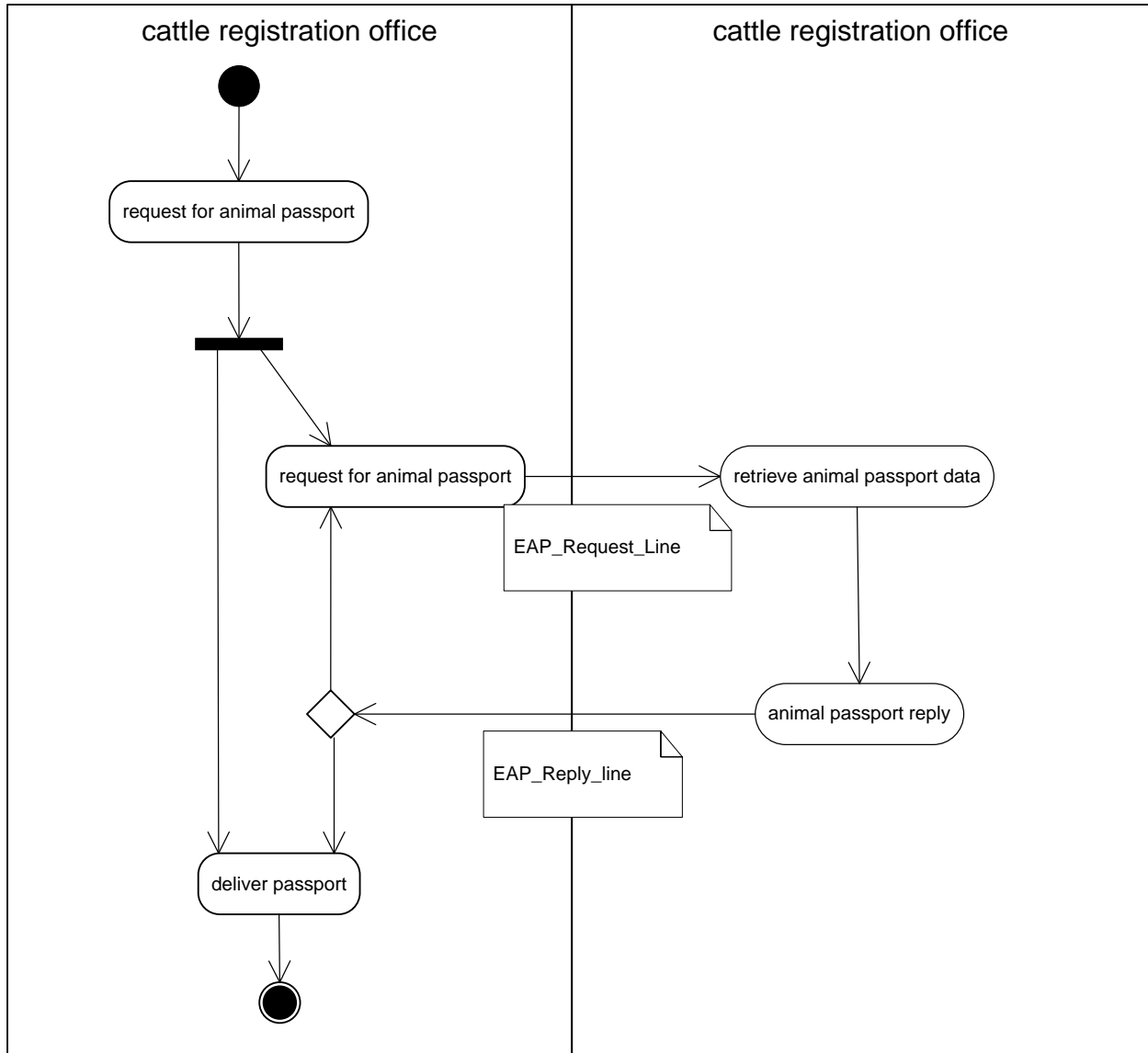


Figure 2c: Activity diagram information process animal passport

Activity diagram description:

Business collaboration

Business collaboration	
Identifier	EAP Electronic Animal Passport
Description	<p>A veterinarian inspector request his Cattle Registration Office for the electronic animal passport. His request is based on the Animal ID, which can be the eartag number.</p> <p>The cattle registrations office sends all passport information to the inspector.</p> <p>Incase the registration office is not the issueing authority, it request the passport data from the issueing cattle registration office. The tracing for the issueing office start at the cattle registration office in the country of birth of the animal.</p>
Partners types	Veterinarian Inspector, Cattle Registration Office / Passport Issueing Authority
Authorized Roles	Veterinarian Inspector, Cattle Registration Office,
Legal Steps/Requirement	<p>EU regulation 911/2004 and 64/432/EEG</p> <p>Documents describes legal requirements of the animal passport in the EU</p>
Economic consequences	None
Initial/Terminal Events	
Scope	Animal identification by veterinarian inspection on location and / or on transport (within EU territory)
Boundary	None
Constraints	None

5.4 Information model definition (class diagram)

Class diagram describes all the necessary classes of information for a flow of information exchange for the cattle registration case

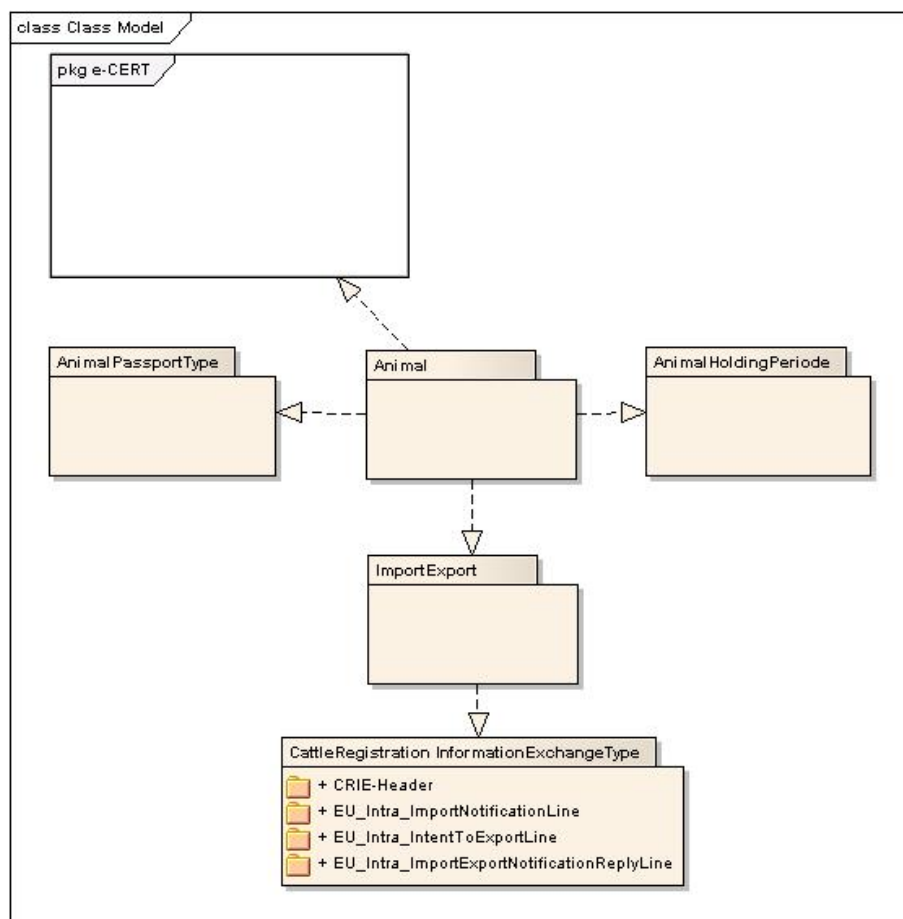


Figure 3:

Mult.	Business term	Rel.	Type	Description
1	CRIE Header	Ass	CRIE Header	The entity contains the general information (party details, date)
1..*	EU_Intra Intent to Export Line	Ass	CRIE Line	The entity contains the breakdown of 1to n animal data sheets contained in the exchange
1..*	EU_Intra Import Notification Line	Ass	CRIE Line	The entity contains the breakdown of 1 to n animal data sheets contained in the exchange
1..*	EU_Intra Import Export Notification Reply Line	Ass	CRIE Line	The entity contains the breakdown of 1to n animal data sheets contained in the exchange

CRIE Header:

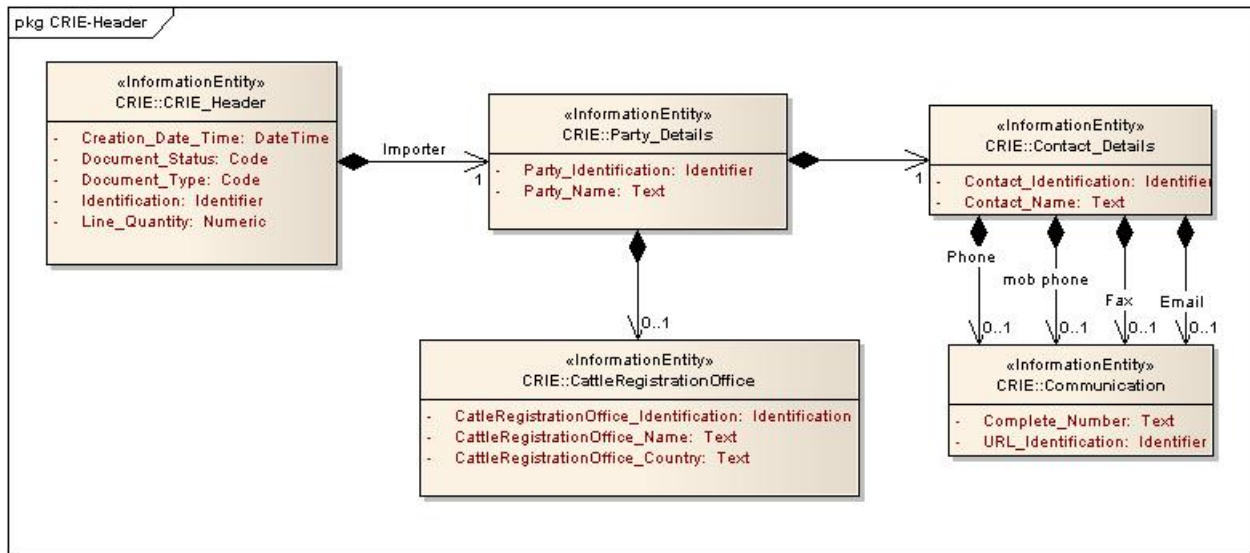


Figure 4: class diagram CRIE header

CRIE Header:

Description: The entity contains the general information (party details, date)

Mult.	Business term	Rel.	Type	Description
1	Identification	Att	Identifier	The unique number assigned by the issuer to identify an CRIE message
1	Creation_DateTime	Att	Date	The date when the document is issued
0..1	Line_Quantity	Att	Numeric	The number of message lines
	Document_Status	Att	Code	
1	Exporter	ass	<u>Party_Details</u>	The entity contain the details of the exporting office
1	Importer	Ass	<u>Party_Details</u>	The entity contains the details of the importing office

Party details

Description: the entity contains the details of the name and the prime identification of a party.

Mult.	Business term	Rel.	Type	Description
1	Party_Identification	Att.	Identifier	The code identifying a party involved in the exchange
0..1	Party_Name	Att.	Text	The name of the party involved in a transaction.

Cattle Registration Office

Description: the entity contains the details of the Cattle Registration Office.

Mult.	Business term	Rel.	Type	Description
1	CattleRegistrationOffice_Identifier	Att.	Identifier	The code identifying the cattle registration office
0..1	CattleRegistrationOffice_Name	Att.	Text	The name of the party involved in a transaction.
1	CattleRegistrationOffice_Country	Att.	Text	The country of the cattle registration office

Contact details

Description: The entity contains the details of the contact person or department.

Mult.	Business term	Rel.	Type	Description
0..1	Contact_Identifier	Att.	Identifier	The unique identifier of a contact person or department.
0..1	Contact_Name	Att.	Text	The name of a contact person.
0..1	Direct_Phone_Number	Att.	Communication	The number of the direct phone.
0..1	Mobile_Phone_Number	Att.	Communication	The number of the mobile phone.
0..1	Telefax_Number	Att.	Communication	The number of the facsimile.
0..1	E-Mail_Address	Att.	Communication	The E-Mail address.

Communication

Description: The entity contains the details of the communication numbers

Mult.	Business term	Rel.	Type	Description
0..1	Complete_Number	Att.	Text	The complete communication number
0..1	URL_Identifier	Att.	Identifier	The URL Identification for the email

Authority

Description: The entity contains the details of the Authority issuing the animal passport

Mult.	Business term	Rel.	Type	Description
1	Authority_Name	Att.	Text	The name of the authority

Country

Description: The entity contains the details of the country

Mult.	Business term	Rel.	Type	Description
1	ISO_Country_Code	Att.	Code	The ISO Country code (2 char code, ISO 3166-1-Alpha-2)
1	ISO_Country_Name	Att.	Text	The ISO country name (ISO 3166-1-Alpha-2)

Animal

Class diagram

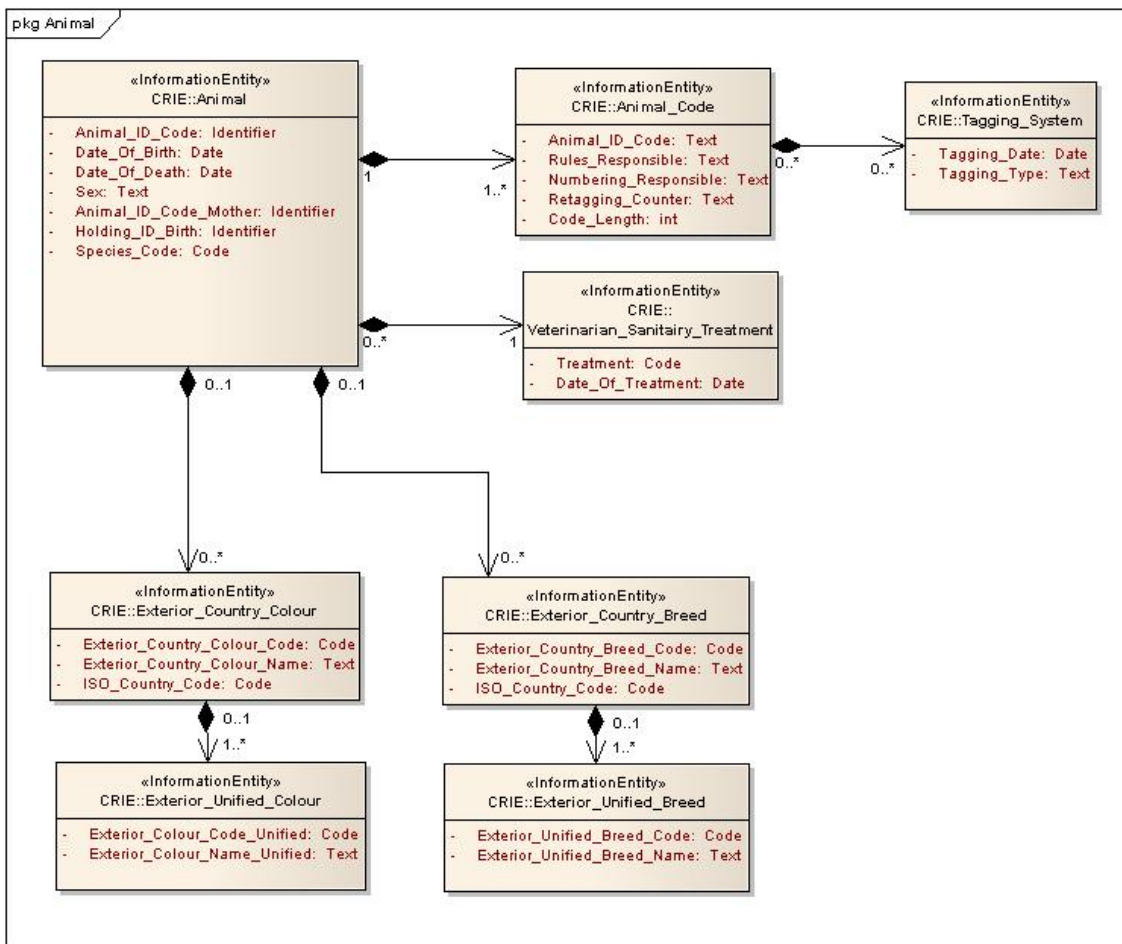


Figure 5 class diagram Animal

Description; the entities contain the breakdown of a single animal data sheet, belonging to one unique bovine animal

Animal.

Mult.	Business term	Rel.	Type	Description
1	Animal_ID_Code	att	Identification	The animal identification code, by example the number appearing on the eartag
1	Date_Of_Birth	Att	Date	Date birth of the animal
1	Date_Of_Death	Att	Date	Date death of the animal
1	Sex	Att	Text	Sex of the animal
0..1	Animal_ID_Code_Mother	Att	Identifier	Identification code of the mother (eartag number mother)
0..1	Holding_ID_Birth	Att	identifier	Identifier of the premise where the animal is born or found
1	Species_Code	Att	Code	Code for the specief of the animal (Bovine, Sheep, Goat)

Exterior_Country_Breed

Mult.	Business term	Rel.	Type	Description
0..1	Exterior_Country_Breed_Code	Att	Code	Code for breed look al like of the animal, as registrated in country according to the national breedcode list
0..1	Exterior_Country_Breed_Name	Att	Text	Name of the breed look a like of the animal, as registrated in country according to the national breedcode list
1	ISO_Country_Code	Att.	Code	The ISO Country code (2 char code, ISO 3166-1-Alpha-2)

Exterior_Unified_breed

Mult.	Business term	Rel.	Type	Description
0..1	Exterior_Unified_Breed_Code	Att	Code	Code for breed look al like of the animal, as registrated accoprding to the international breedcode list
0..1	Exterior_Unified_Breed_Name	Att	Text	Name of the breed look a like of the animal, as registrated according to the international breedcode list

Exterior_Country_Colour

Mult.	Business term	Rel.	Type	Description
0..1	Exterior_Colour_Breed_Code	Att	Code	Code for Colour look al like of the animal, as registrated in country according to the national breedcode list

0..1	Exterior_Colour_Breed_Name	Att	Text	Name of the Colour look a like of the animal, as registrated in country according to the national breedcode list
1	ISO_Country_Code	Att.	Code	The ISO Country code (2 char code, ISO 3166-1-Alpha-2)

Exterior_Unified_Colour

Mult.	Business term	Rel.	Type	Description
0..1	Exterior_Unified_Colour_Code	Att	Code	Code for Colour look al like of the animal, as registrated accoprding to the international Colour code list
0..1	Exterior_Unified_Colour_Name	Att	Text	Name of the Colour look a like of the animal, as registrated according to the international Colour code list

Animal_Code

Mult.	Business term	Rel.	Type	Description
1	Animal_ID_Code	Att	Text	The animal identification code, by example the number appearing on the eartag
1	Rules_Responsibile	Att	Text	Specification of regulation under which the animal is marked and identified
1	Numbering_responsible	Att	Text	Authority responsible for the issueing of the identification code
0..1	Retagging_Counter	Att	Text	The serial number indicating replacement of the transponder/tag
1	Code_Length	Att	Integer	Length of the identification code

Tagging_System

Mult.	Business term	Rel.	Type	Description
1	Tagging_Date	Att	Date	Date when the identification tag ,transponder, tattoo is applied on the animal
1	Tagging_Type	Att	Text	Type of the identification object (ear tag, tattoo, EID in eartag, bolus, inserts...)

Veterinarian Treatment

Mult.	Business term	Rel.	Type	Description
1	Treatment	Att	Code	The code for the type of treatment (eg. A vaccination or other sanitary indicators)
1	Date_Of_Treatment	Att	Date	Date of the treatment eg the date of vaccination, or of setting a veterinarian sanitary flag.

Animal Holding Period

Class diagram

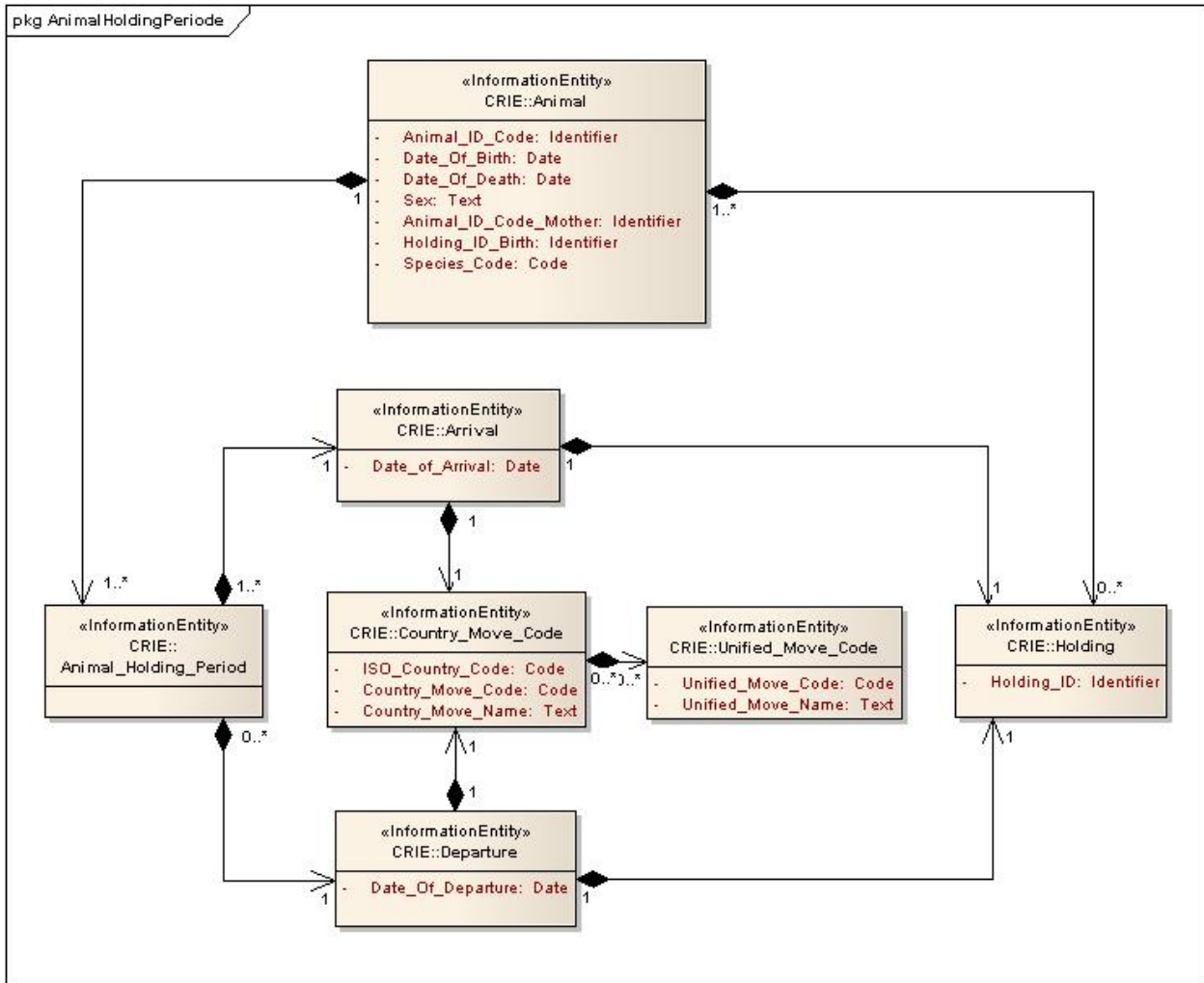


Figure 6 class diagram Animal holding period.

Description: The entities contain the breakdown of the premise where the animal is hold for a certain period.

Arrival

Mult.	Business term	Rel.	Type	Description
1	Date_Of_Arrival	Att	Date	Date of arrival of the animal at the premise

Departure

Mult.	Business term	Rel.	Type	Description
0..1	Date_Of_Departure	Att	Date	Date of departure of the animal from the premise

Country_Move_Code

Mult.	Business term	Rel.	Type	Description
1	ISO_Country_Code	Att.	Code	The ISO Country code (2 char code, ISO 3166-1-Alpha-2)
1	Country_Move_Code	Att	Code	Code of the type of movement (birth, found, arrival, departure, slaughter, death) according to the country list
1	Country_Move_Name	Att	Text	Description of the type of movement (birth, found, arrival, departure, , slaughter, death) according to the country list

Unified_Move_Code

Mult.	Business term	Rel.	Type	Description
1	Unified_Move_Code	Att	Code	Code of the type of movement (birth, found, arrival, departure, slaughter, death) according to the international list
1	Unified_Move_Name	Att	Text	Description of the type of movement (birth, found, arrival, departure, slaughter, death) according to the international list

Holding

Mult.	Business term	Rel.	Type	Description
1	Holding_ID	Att	Identifier	The identification number of the premise the animal arrived or left, eq the premise the animal is hold for a certain periode

Import Export

Class diagrams

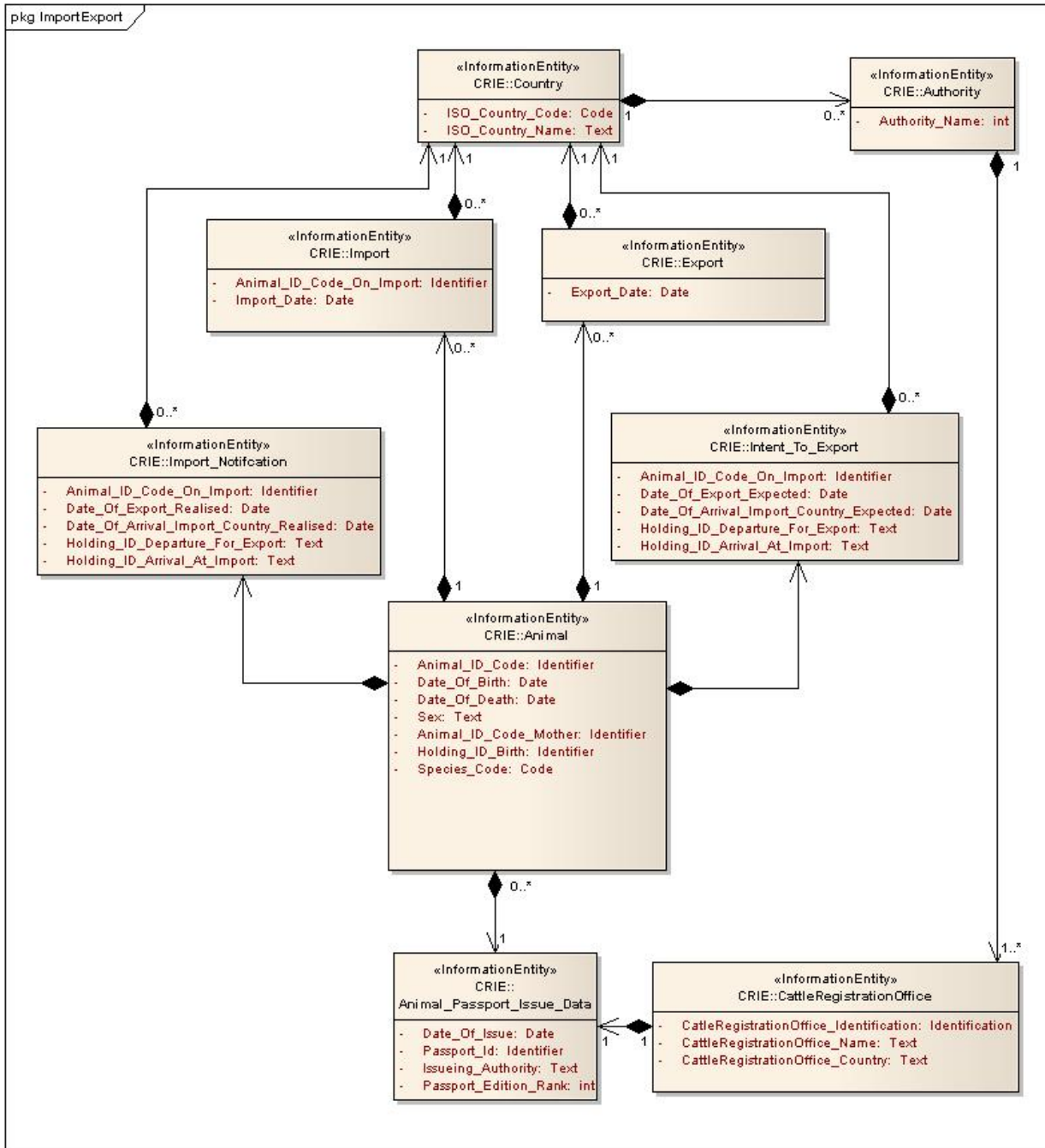


Figure 6 class diagram import export

Description: The entities contain the breakdown of the general information related to import and export of a bovine animal.

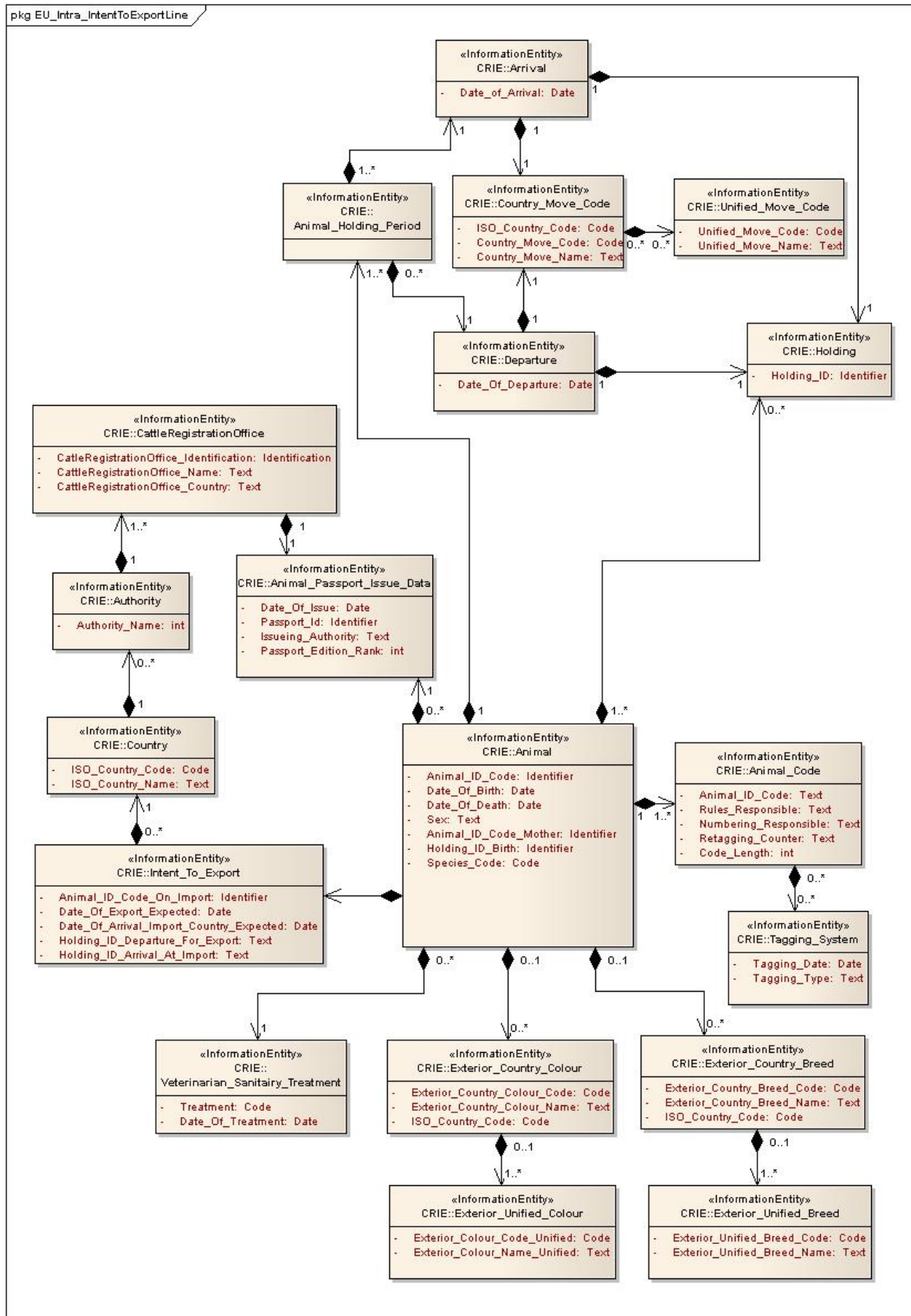


Figure 7 class diagram intent to export

Description: the entity contains the list of export notification announcement with the related bovine_animal data sheets

Intent_To_Export

Mult.	Business term	Rel.	Type	Description
0..1	Animal_ID_Code_On_Import	Att	Identifier	Animal ID code, as the animal is identified and tagged at the moment of export .
0..1	Date_Of_Export_Expected	Att	Date	Expected data of departure of the animal from the exporting country
0..1	Date_Of_Arrival_Import_Country_Expected	Att	Date	Expected date of arrival of the animal in the importing country
0..1	Holding_ID_Departure_For_Export	Att	Text	The ID of the holding, in the exporting country, from which the animal is exported. (holding of departure)
0..1	Holding_ID_Arrival_AT_Import	Att	Text	The ID of the holding, in the importing country, to which the animal is exported. (holding of destination)

CRIE:Import_Notification_Line

Classdiagram

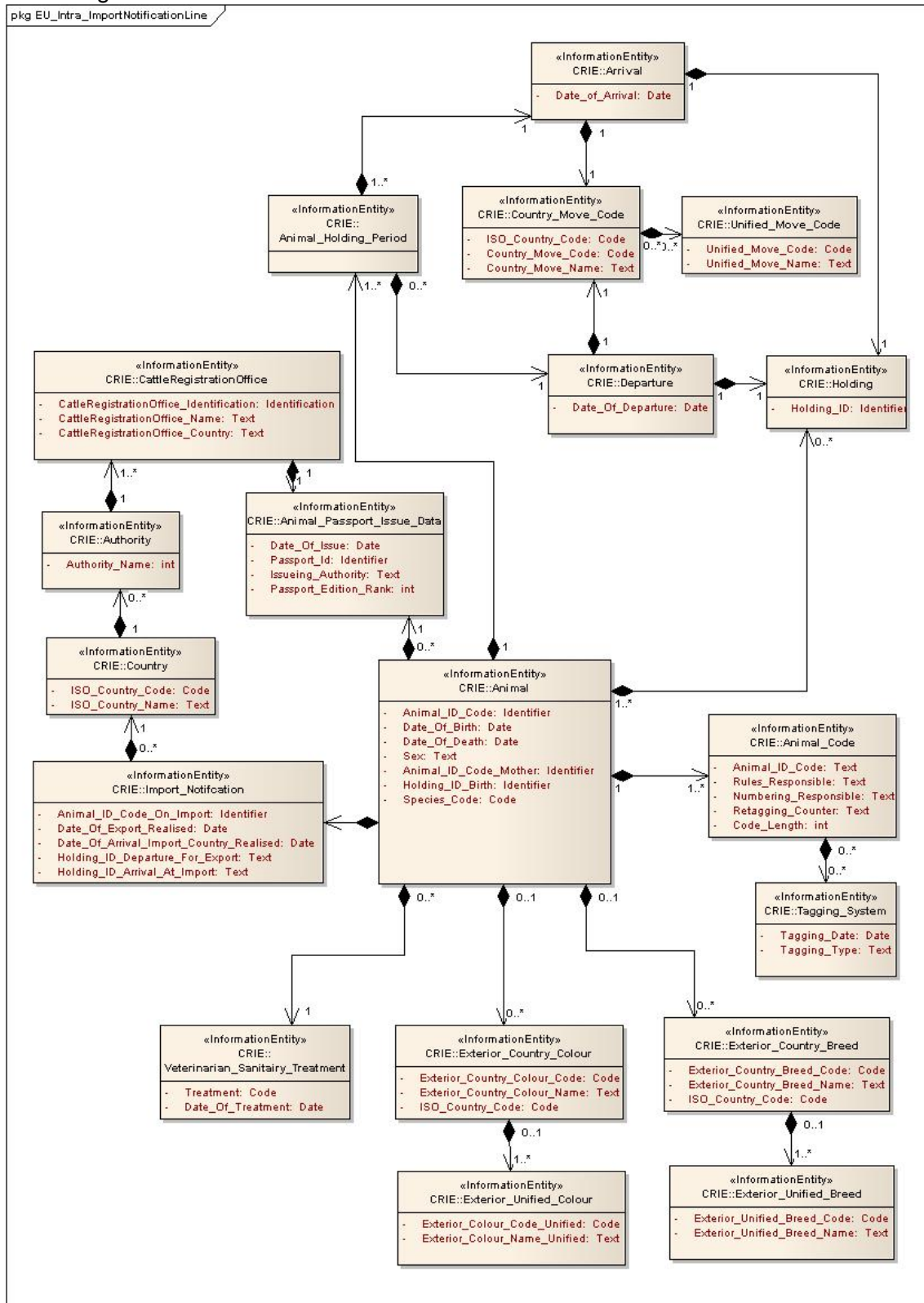


Figure 8 class diagram import notification

Import_Notification

Description: the entity contains the list of import notification announcement with the related bovine_animal data sheets

Mult.	Business term	Rel.	Type	Description
0..1	Animal_ID_Code_On_Import	Att	Identifier	Animal ID code, as the animal is identified and tagged at the moment of export .
0..1	Date_Of_Export_Realised	Att	Date	Date of export of the animal from the exporting country
0..1	Date_Of_Arrival_Import_Country_Realised	Att	Date	Date of import of the animal in the importing country
0..1	Holding_ID_Departure_For_Export	Att	Text	The ID of the holding, in the exporting country, from which the animal is exported. (holding of departure)
0..1	Holding_ID_Arrival_AT_Import	Att	Text	The ID of the holding, in the importing country, to which the animal is exported. (holding of destination)

Import Export Notification Reply Line

Description: The entity contains the list of bovine animal data sheets. The line is the reply on the initial intent to export message or to the initial notification of import message. The animal data sheets in this reply message are composed of data extracted from the animal registration databases. The data can be used to verify the data of the initial received or collected animal data about the import or export, and to complete the animal data in the animal registration database.

In case there is no valid bovine animal data available at the responding cattle registration office, an Import_Export_Notification_Error line for the individual animal is send.

No valid bovine animal data available can be caused by:

- The Animal_ID_Code does not exist in the registration of the cattle registration office
- The animal registration file is closed because the animal is registered as
 - slaughtered
 - dead
 - exported on earlier occasion

Optionally the out of date Animal_Holding_Periode data are send.

Class diagram

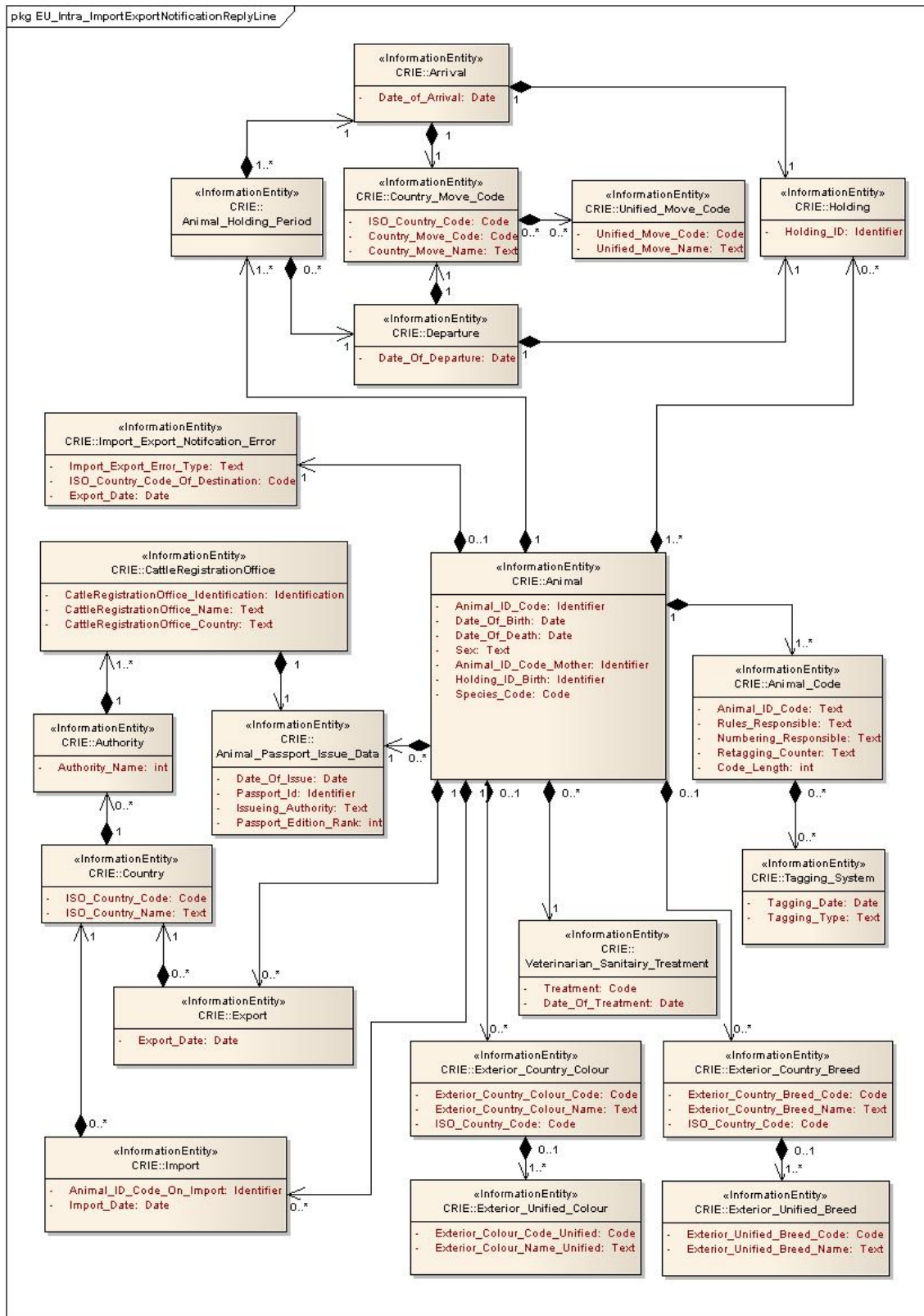


figure 9 class diagram import export notification reply line

Import_Export_Notification_Error

Mult.	Business term	Rel.	Type	Description
1	Import_Export_Error_Type	Att.	Text	The Animal_ID_Code is not registrated / has no valid registration at the sending Cattle Registration Office <ul style="list-style-type: none"> - not registrated - dead - slaughtered - exported to country, at earlier date.
0..1	Country_Of_Destination	Att	Text	Name of Country animal is exported to.
0..1	Date_Of_Departure	Att	Date	Date of departure from country

Export

Mult.	Business term	Rel.	Type	Description
1	Export_Date	Att.	Date	- Date of export of the animal from the exporting country

Import

Mult.	Business term	Rel.	Type	Description
1	Import_Date	Att.	Date	- Date of import of the animal from the exporting country

EAP Animal Passport

Class diagram Animal_Passport

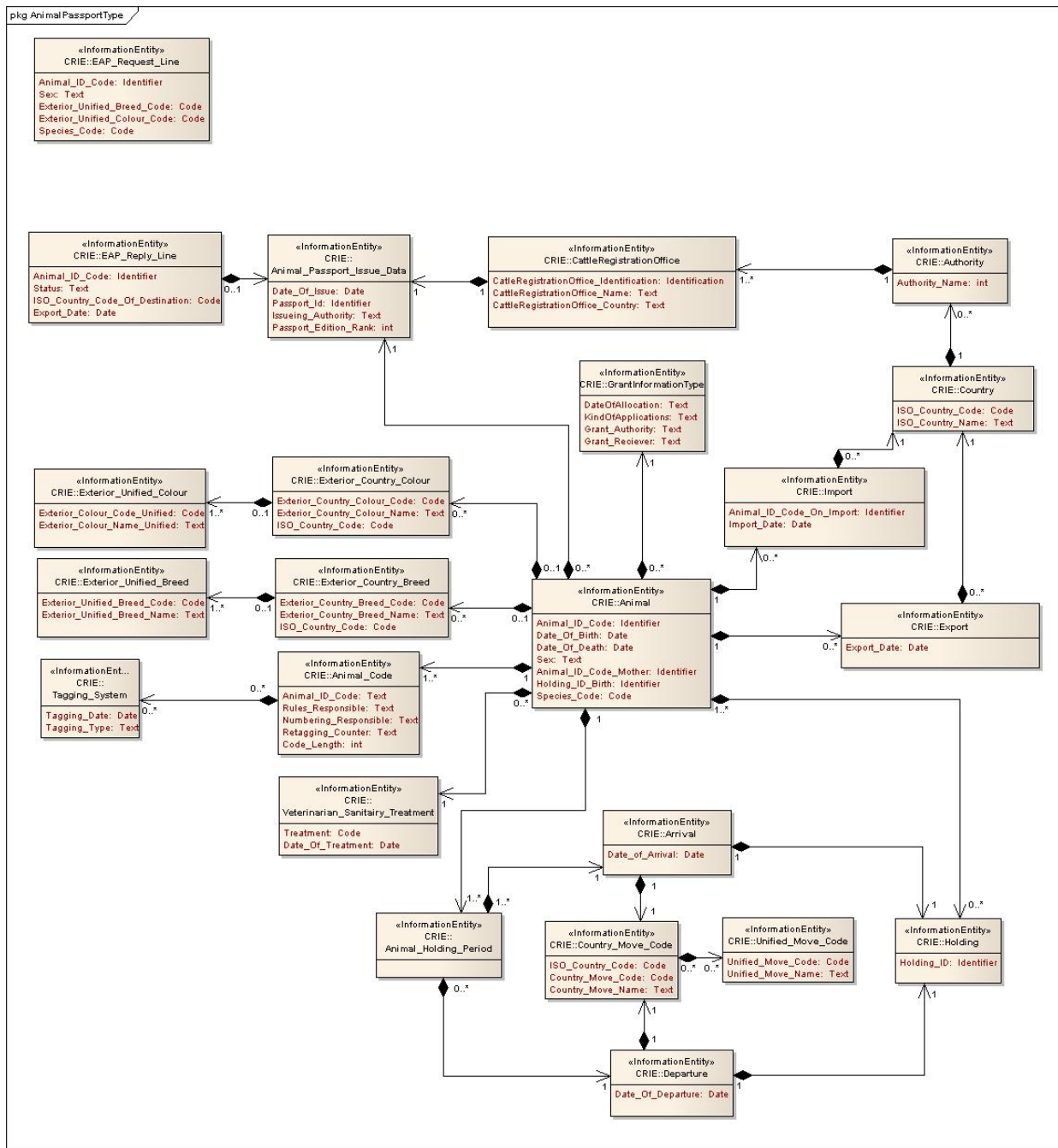


Figure 10 class diagram electronic animal passport

Animal_Passport

Class diagram describes all the necessary classes of information for a flow of information exchange for the Animal passport case.

Mult.	Business term	Rel.	Type	Description
1	CRIE Header	Ass	EAP Header	The entity contains the general information (party details, date)
0..n	EAP Request Line	Ass	EAP_Request_line	The entity contains the breakdown of a request for electronic animal passports for one or more animals, identified by their eartag numbers
0..1	EAP Reply Line	Ass	EAP Reply_Line	This entity contains the breakdown of the replies containing the e-passport data for one or more animals, and /or the error lines incase no passport is issued or a passport is rejected

EAP_Request_Line

Mult.	Business term	Rel.	Type	Description
1	Animal_ID_Code	Att.	Identifier	The eartag number
0..1	Sex	Att	Text	Sex of the animal
0..1	Exterior_Unified_Breed_Code	Att	Code	Breed of the animal, as assumed by inspector
0..1	Exterior_Unified_Colour_Code	Att	Code	Colour of the animal, as assumed by inspector
1	Species_Code	Att	Code	Code for the species of the animal (Bovine, Sheep, Goat)

EAP_Reply_Line

Mult.	Business term	Rel.	Type	Description
1	Animal_ID_Code	Att.	Identifier	The eartag number
1	Status	Att	Text	<p>The status of the animal passport</p> <ul style="list-style-type: none"> • Passport available, passport sheets are included • Animal in registration, passport not issued • Animal in registration, animal blocked for moving • Animal not in registration: • Animal dead • Animal slaughtered • Animal exported to country

0..1	ISO_Country_Of_Destination	Att	Code	Name of Country animal is exported to.
1	Export_Date	Att.	Date	- Date of export of the animal from the exporting country

Animal_Passport_Issue_Data

Description: the entity describes the administrative attributes of the e-Animal Passport, ie the date of issue and the Issuing Authority.

Mult.	Business term	Rel.	Type	Description
1	Date_Of_Issue	Att.	Date	Date the passport is issued by the authority
1	Passport_ID	Att	Identifier	Passport number
1	Issueing_Authority	Att	Text	The issueing authority of the passport, ie. the CattleRegistrationOffice (in EU countries)
1	Passport_Edition_Rank	Att	Integer	Edition rank when several passport have been issued for the same animal by the same country

Grant Information Type

Description: This entity describes the applications and / or grants related to an animal. Applications and grants are practiced in the EU as part of the Common Agriculture Program.

Both the Authority issuing the grant and the receiver of the grant are listed on the passport.

Mult.	Business term	Rel.	Type	Description
1	Date_Of_Allocation	Att.	Date	Date of allocation of the application or grant
1	Kind_Of_Application	Att	Text	Type of application or Grant (bull, steer 9 month, steer 21 month, heifer....)
1	Grant_Authority	Att	Party_Details	Authority responsible for issueing grant
1	Grant_Reciever	Att	Party_Details	Party receiving the grant

e-CERT

The next product inspection entities are not required for animal passports in case of EU intra trade. They become part if the animal is exported outside the EU. Then the animal passport is part of the consignment documents as defined in the e-CERT specifications.

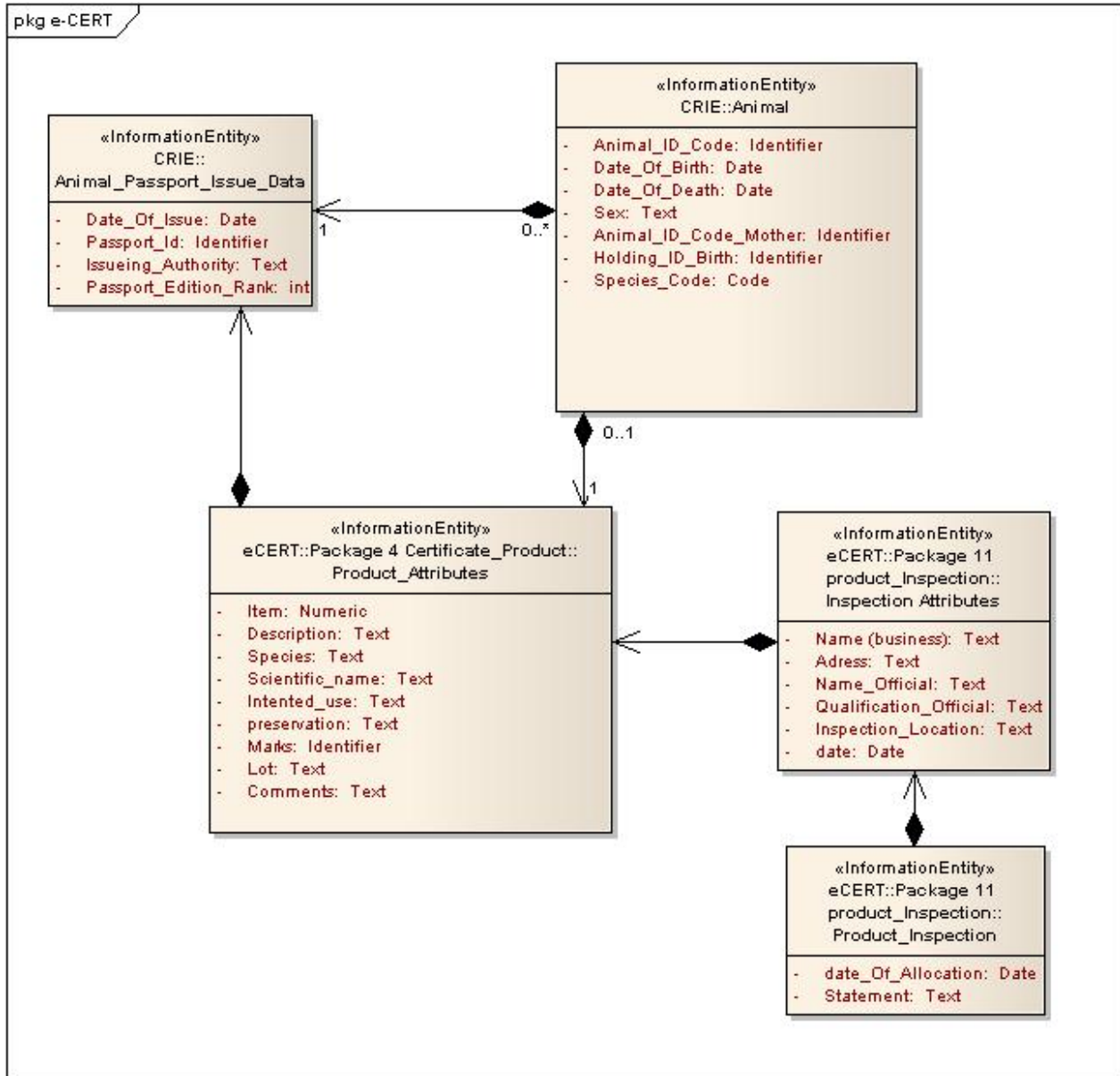


Figure 11 class diagram e-CERT

In that case the e animal passport contains data elements which are defined in the e-CERT in the packages 4 Certificate_Product::Product. and in package 11 Product_Inspection::inspection and Product_Inspection::Declaration

Certificate_Product::Product Attributes

Mult.	Business term	Rel.	Type	Description
1	Item	Att.	numeric	Sequential reference number for the product item in this consignment, starting with number 1 for each consignment.
1	Description	Att	Text	Description of the product , in this case life animal - bovine species
1	Species	Att	Text	Description of the species of the product
1	Scientific_name	Att	Text	Scientific description of the species of the product
1	Intented use	Att	Text	Indicator for use of product
0..1	Preservation	Att	Text	<Not in use for life animals>
1	Marks	Att	Identifier	The eartag number
1	Lot	Att	Text	<Not in use for life animals>
0..1	Comments	Att	Text	Any statement relevant for the certification of the product

Product_Inspection: Inspection_Attributes

Mult.	Business term	Rel.	Type	Description
1	Name (business)	Att.	Text	Official business name of the inspection premises
1	Address	Att	Text	Official business address of the inspection premises
1	Name_Official	Att	Text	Name of the official who approved the animal passport
1	Qualifications_Official	Att	Text	Relevant qualifications of the apporved official
1	Inspection_Location	Att	Text	Location(City and Country) of approval
1	Date	Att	Date	Date that the official approved the passport to export the animal

Product Inspection: Inspection_Declaration

Mult.	Business term	Rel.	Type	Description
1	Date_Of_Allocation	Att.	Date	Date of allocation of the application or grant
0..n	Statement	Att	Text	Single statement certifying compliance twith the specific requieremetns of the importing country, or its translation ((by example health certificate..?)

5.5 Business Information Entities

5.6 Business rules

The CRIE message is used to exchange information between Cattle Registration Authorities among themselves and other concerned authorities.

The e-Animal passport is used to provide an inspector with the identification documents of the inspected animal. The parties involved are the inspector, his (national) cattle registration offices, and the e-Animal passport issuing office.

The e-Animal passport can be issued for identification of the animal in his country of birth, country of holding and in cases the animal is on (international) transport.

The e-Animal passport is the electronic equivalent of the present Paper Animal passport used in the EU.

5.7 Definition of terms

Parties and party roles

Terms	Definitions
Cattle Registration Office	Authority who keeps the registry of bovine animals. In the EU the cattle registration authority is based upon the EU regulation 1760/2000, as the authority who keeps a computerized register. In the EU this authorities issue the animal passport.
Animal passport	Official document which identifies an individual animal. The passport is defined in the EU regulation 911/2004 and regulation 64/432/EEG.

Appendix the overview of all Classes

