



**EUROPEAN ENVIRONMENT
AND HEALTH PROCESS**



Seventh Ministerial Conference on Environment and Health

Accelerating action for healthier people, a thriving planet, a sustainable future



Budapest, 5-7 July 2023

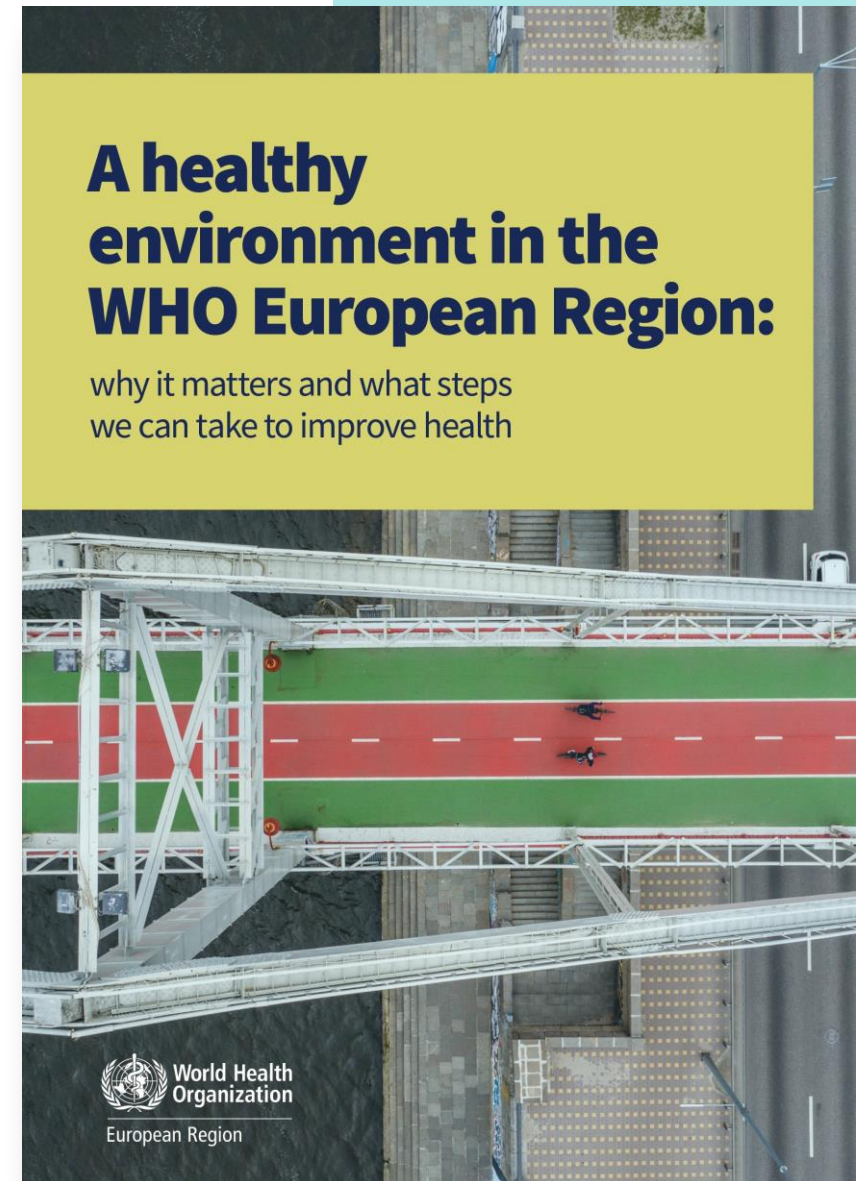
Nino Sharashidze
WHO

Where are we coming from?

Scan QR code to read the full report



<https://apps.who.int/iris/handle/10665/368160>

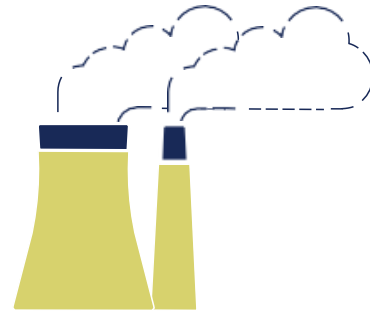


Ambient and household air pollution Key risks to health

In the WHO European Region in 2019:



97% of the population
were exposed to PM_{2.5}
concentrations above the
WHO air quality guidelines.



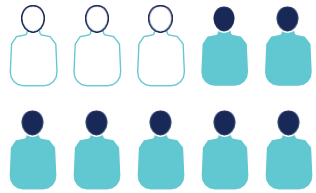
569 000 premature
deaths can be attributed
to ambient air pollution.



154 000 deaths
can be attributable to
household air pollution.

WASH Key risks to health

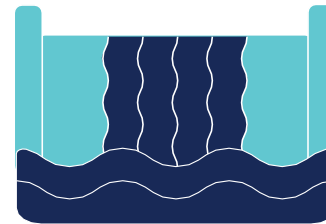
Access to adequate WASH services is still limited in the Region.
Data from 2020 and 2021 showed that:



Only **7/10** people used safely managed sanitation services².



About **77** million people lacked safely managed drinking-water.

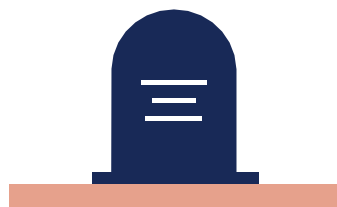


2.7 million people relied on surface water as their main drinking source.



Around **350 000** people still practiced open defecation³.

Chemicals Key risks to health



In 2019 in the WHO European Region,
269 500 deaths
were attributable to exposure to chemicals
or groups of chemicals such as pesticides,
occupational carcinogens, lead and
occupational particles.



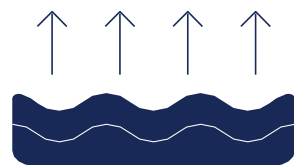
However, as this assessment is
based on only a specified and,
therefore, limited list of particular
chemicals and groups, the true
burden is considerably larger.

Climate change Key risks to health

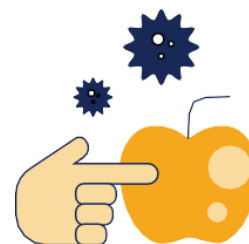
In the last 50 years, 1 672 reported disasters in the Region have led to 159 438 deaths and economic losses of US\$ 476.5 billion.



Floods, at **38%** and storms, at **32%** were the most-reported causes of disasters.



16-44 million more people globally, will be affected by high water stress by the 2070s.



An increase of **17%** was seen in the reproductive rate of dengue between 1986 and 2020.



148 109 lives were lost due to extreme temperatures, led to the highest proportion of disaster-related deaths (93%).



**Progress in the WHO European Region
towards the SDGs in the context of the
Ostrava Declaration on Environment
and Health**
Mid-way to 2030



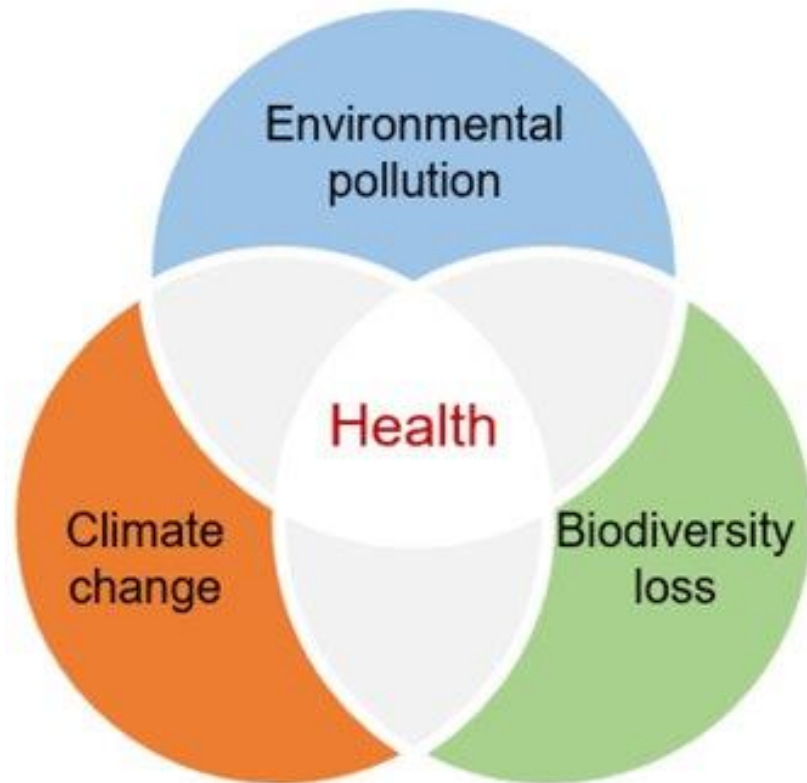
<https://apps.who.int/iris/handle/10665/368166>



The Conference in a nutshell:

Addressing the health dimension of the “triple environmental crisis” while recovering from COVID-19

Focus on accelerating action to:



Tackle climate change, environmental pollution and loss of biodiversity

Build Forward Better from COVID-19 pandemic, including actions for urban resilience

Protect vulnerable populations and vulnerable life stages



7MCEH at a glance

- > 600 participants
- 43 Member States
- 35 senior political officials



- 7 plenary sessions
- Ministerial lunch
- 20 parallel sessions
- 33 posters' area
- Exhibition area
- Press conference
- Social programme

7MCEH outcomes

The **Budapest Declaration** and its **Road Map to 2030** accelerate progress and **action** towards **addressing health challenges** related to

- ✓ climate change
- ✓ environmental pollution
- ✓ loss of biodiversity

while recovering from the COVID-19 crisis





EHP Partnerships



Human Biomonitoring in the WHO European Region

(led by Germany and co-led by
Georgia)

Health Sector Climate Action

(led by Ireland and supported by
Austria, Belgium, the
Netherlands Norway and UK)

THE PEP/EHP Partnership on Healthy Active Mobility

(led by Austria, France and the
Netherlands)

Youth in the WHO European Region

(led by Slovenia and co-led by
the International Youth Health
Organization)

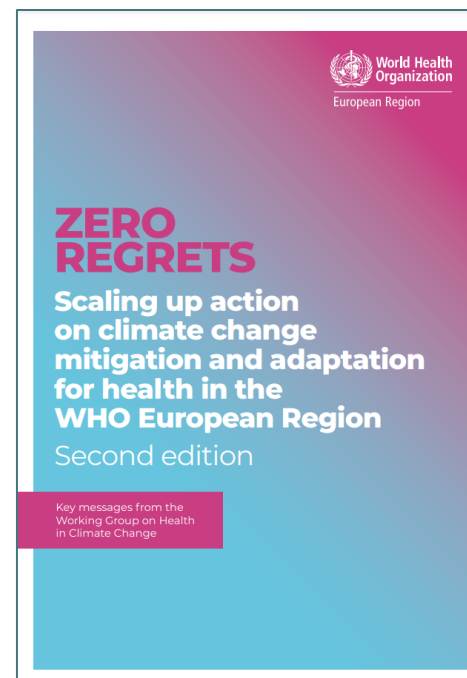
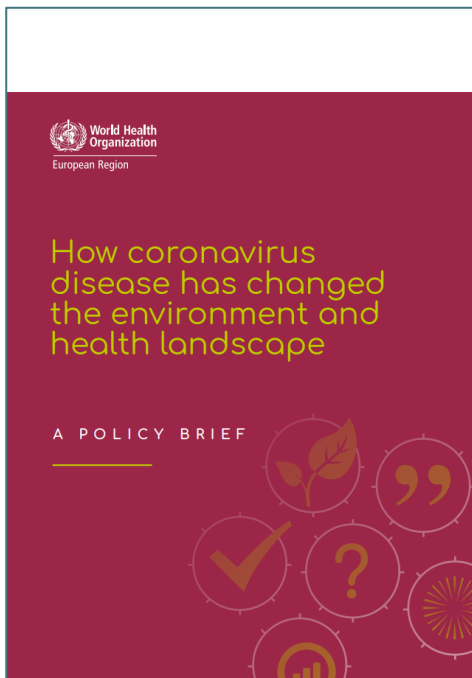
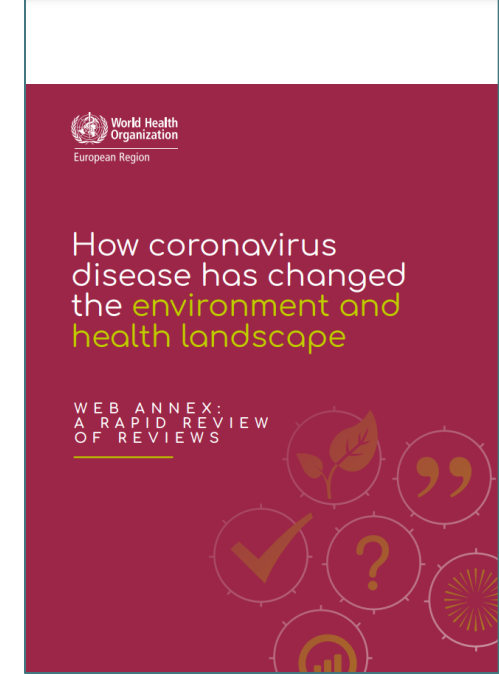
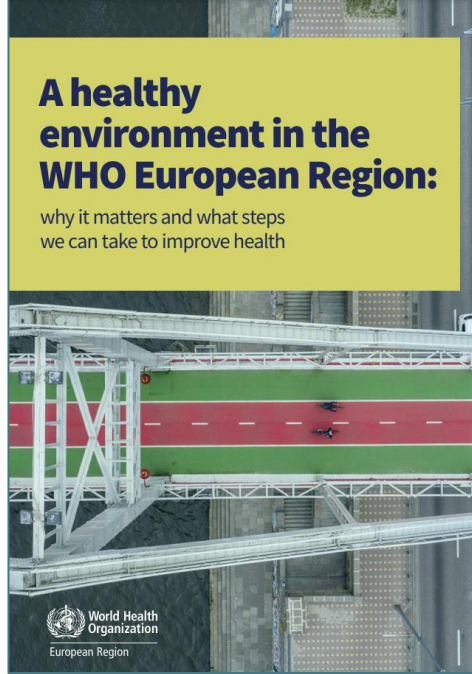


7MCEH and youth: Budapest Youth Declaration

The Youth Declaration calls to:

- Adopt concrete strategies to engage youth in addressing EH issues and encourage their active participation in decision-making processes;
- Provide high-quality information and education on the EH that is easily accessible to youth groups;
- Implement a comprehensive set of measures to tackle the "triple crisis," including addressing mental health issues.





New evidence and assessments



[Publications](#)

[EH scorecards](#)

Inspiring videos



Multimedia



For more information about the 7MCEH



<https://www.who.int/europe/news-room/events/item/2023/07/05/default-calendar/seventh-ministerial-conference-on-environment-and-health>



euceh@who.int



Link:

