

THE IMPORTANCE OF INDUSTRY TO MOBILIZING METHANE ACTION

The Danone Impact Journey

&

Dairy Methane

Chris Adamo, VP Public Affairs &
Regenerative Agriculture Policy



DANONE LEADS THE WAY GLOBALLY, WITH A UNIQUE HEALTH-FOCUSED PORTFOLIO IN FOOD & BEVERAGES

OUR MISSION

**BRINGING HEALTH
THROUGH FOOD TO
AS MANY PEOPLE
AS POSSIBLE.**

OUR VISION

ONE PLANET, ONE HEALTH

SUSTAINABLE PROFITABLE GROWTH AND VALUE CREATION LED BY OUR ROADMAP:

The Danone Impact Journey

3 pillars: **Health, Nature and People & Communities.**



**IMPACT
JOURNEY**



METHANE REDUCTION BENEFITS: CLIMATE, FOOD SECURITY AND FARMER LIVELIHOODS AND RESILIENCE

DANONE COMMITTED TO REDUCING METHANE EMISSIONS FROM FRESH MILK 30% BY 2030.



1st Food company to align with the **Global Methane Pledge**.



Methane is critical to Danone's **1.5°C SBTi target**.



Methane reduction is key to supporting **farmers' livelihoods and resilience**.

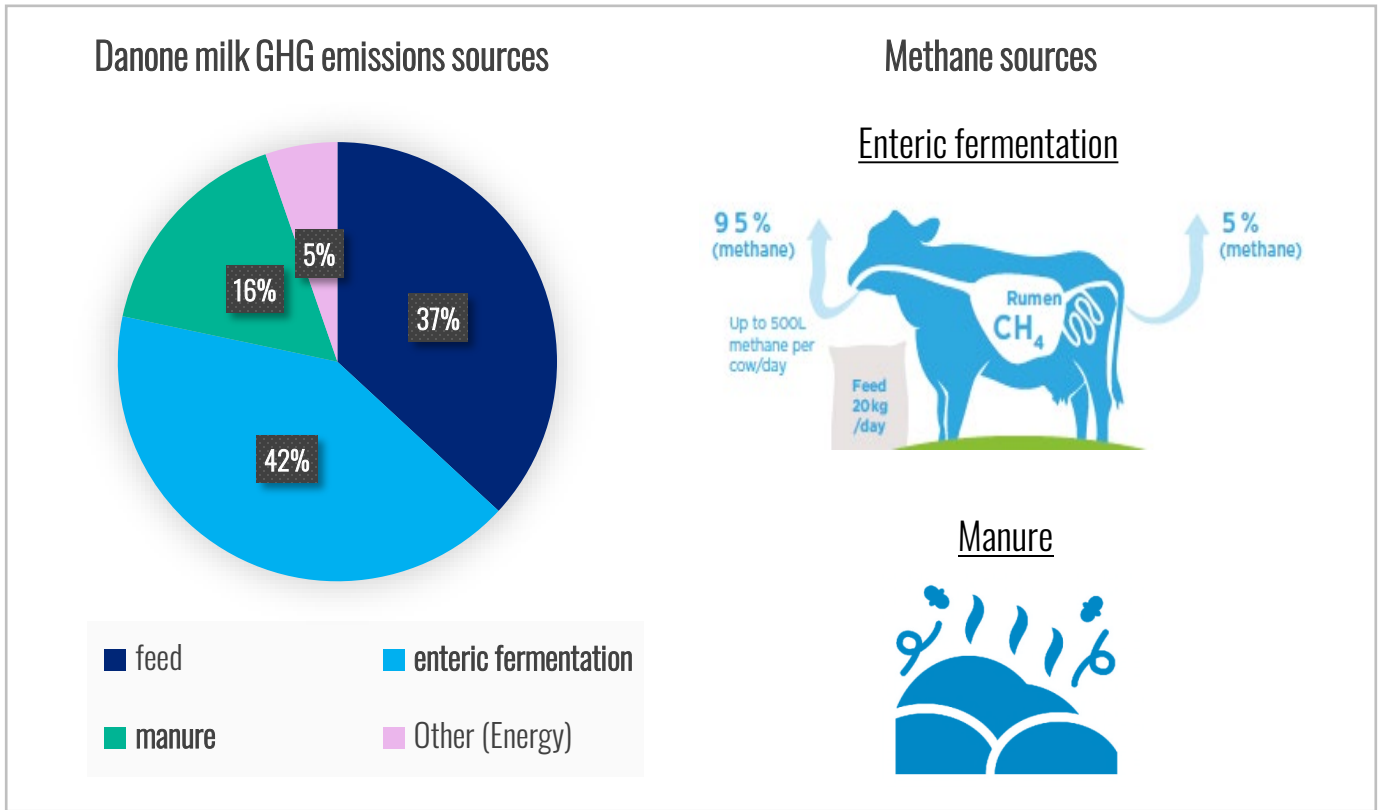


Helping create dietary options that are **affordable, sustainable, and provide nutrient rich protein**



DAIRY METHANE REDUCTION STRATEGY CONSISTENT WITH A REGENERATIVE AGRICULTURE FRAMEWORK

WHERE DOES METHANE COME FROM IN DAIRY?



THREE MAIN LEVERS

#1 Herd Management

#2 Manure management

#3 Enteric Fermentation Innovation

Agriculture = 60% total Danone GHG emissions
 Methane = 42% of agriculture emissions and 25% of total Danone emissions

LEVERAGING OUR EXPERIENCE TO IMPLEMENT LOCAL & FARM-CENTRIC STRATEGIES ACROSS OUR SUPPLY-CHAIN

PROMISING EARLY RESULTS WITH SMALLHOLDERS

- **Supporting Farmers through technical assistance and local infrastructure:**
 - Increasing average milk production per cow (yield), which means Improved revenue for farmers
 - Access to market for upgrade and capacity building of milk collection centers
- **Benefits:**
 - Increase in milk quality
 - Improved GHG and methane efficiency/L of milk
 - Adapting to local crop needs and water resilience

Projects supported by



~1 450



~4 000



~1600



~1500



~1 600

#farmers reached in supported projects to date

WE ARE ACCELERATING ACROSS MULTIPLE GEOGRAPHIES



Anerobic Digesters that work with local farm systems



Advancing a range of improved manure management practices through public-private partnerships



Scaling up 170 Milk collection centers to support ~10.000 farms alongside:

- Farmers trainings & improved heard management



Investing in feed additives to help early adapters of new technology.



INVESTING IN SECTORAL & SYSTEMATIC CHANGE

DAIRY COMPANIES PARTNERING WITH ENVIRONMENTAL DEFENSE FUND

The Dairy Methane Action Alliance (DMAA), led by Environmental Defense Fund, is a global initiative to spur action and accountability to drive down dairy methane emissions. It requires signatories to measure, report, and make a public action plan to reduce methane emissions.



INVESTING IN INNOVATIONS

GMH Accelerator

- Danone became the first company to join the Global Methane Hub Enteric Accelerator



Symbrosia and Cornell University

- We invested in seaweed with Symbrosia and are looking forward to seeing results of public trials at Cornell in the coming year.

