



## TAKING AMBITIOUS CLIMATE ACTION

Decarbonising  
inland transport  
by 2050



**UNECE**

# Monitoring Transport-Related Sustainable Development Goals in ECE region

Fadhah Achmadi, Secretary, WP.6

# Transport- Related Global Indicators



3.6.1: Death rate due to road-traffic injuries



9.1.1: % rural population within 2 km of all-season road

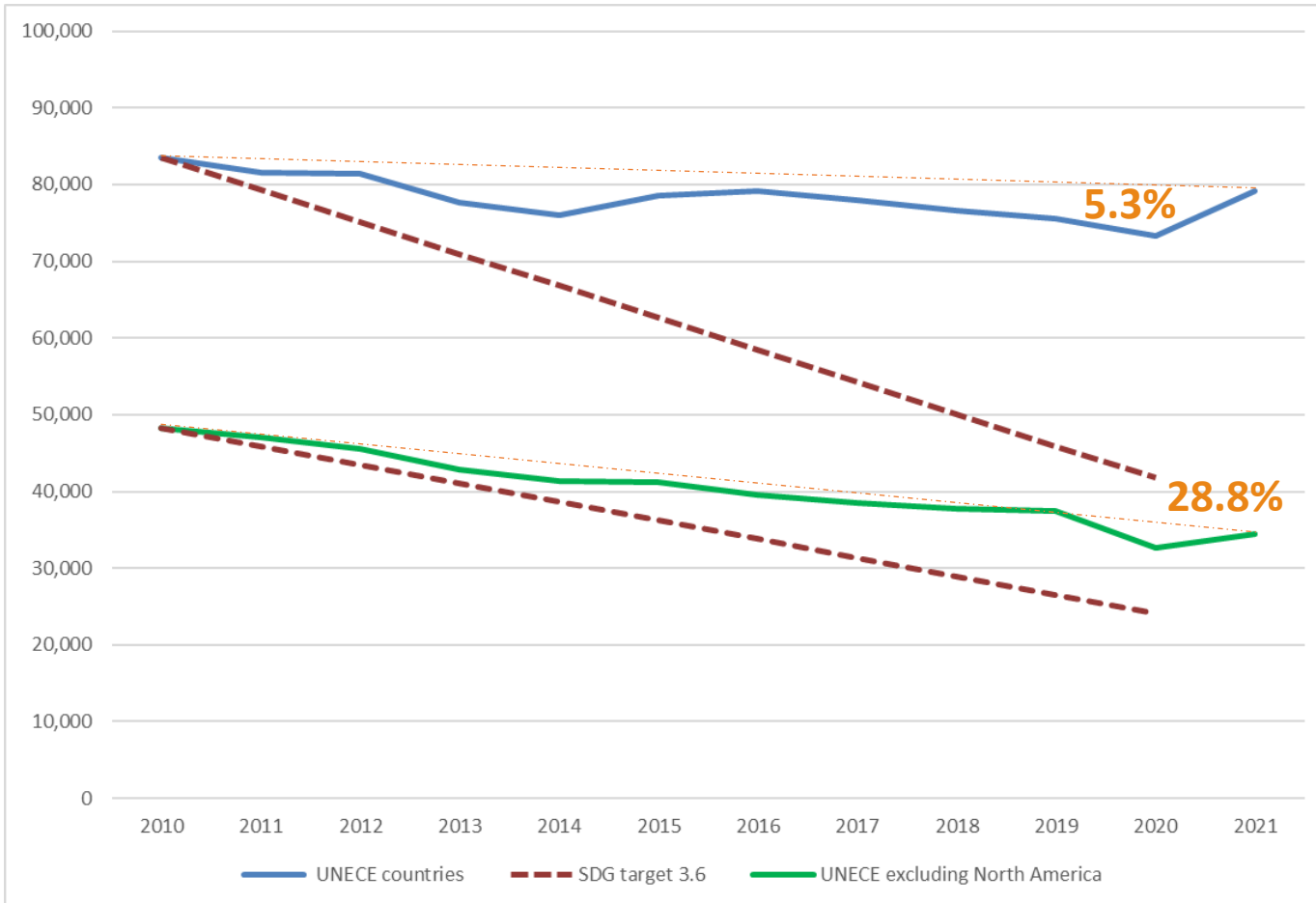
9.1.2: Passenger and freight volumes, by mode of transport



11.2.1: Population with convenient access to public transport



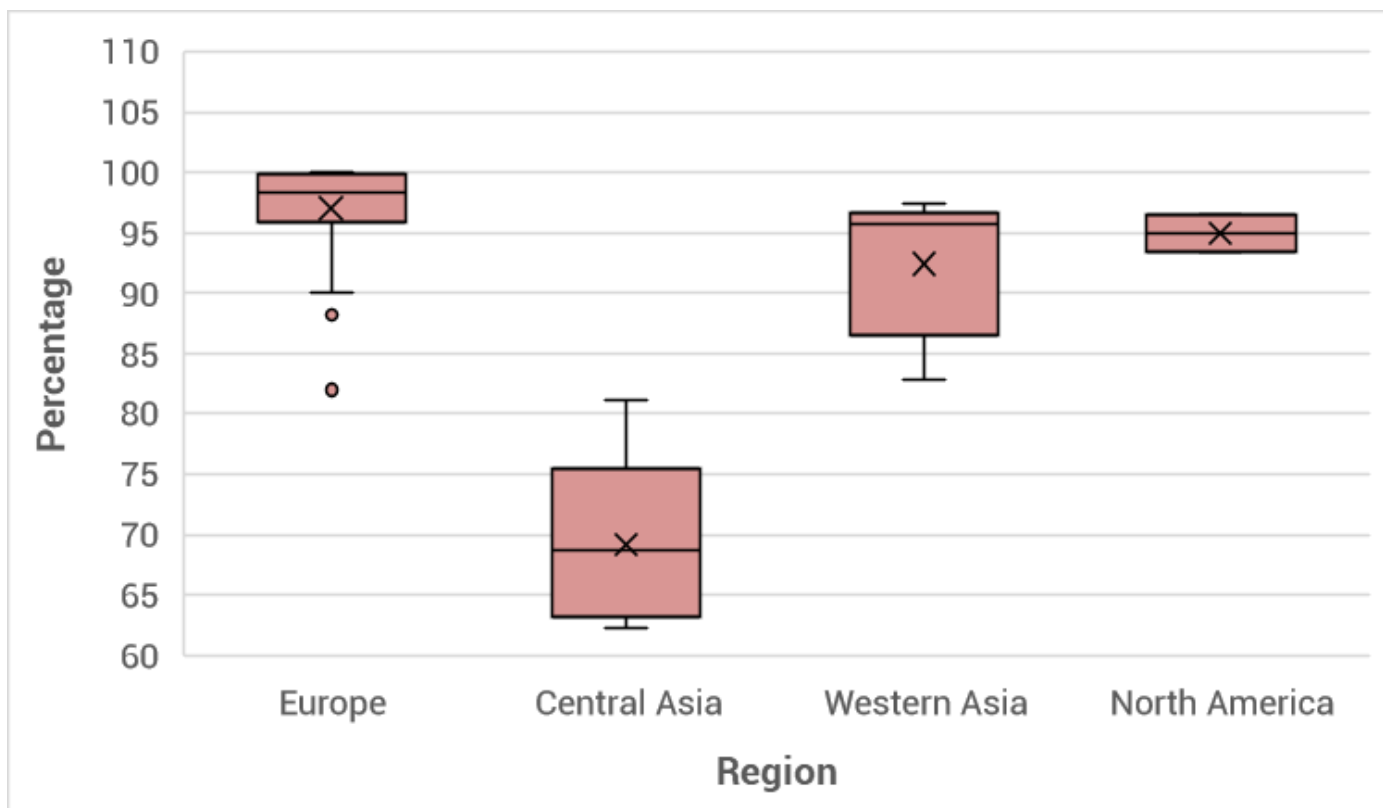
# Road Traffic Fatalities in UNECE Region



- Indicator 3.6.1: reduce the number of road fatalities by half
- Excellent data availability for UNECE countries
- Much better improvement in UNECE region excluding North America
- Right direction, but falls short of the objectives of SDG 3.6



# Rural Access

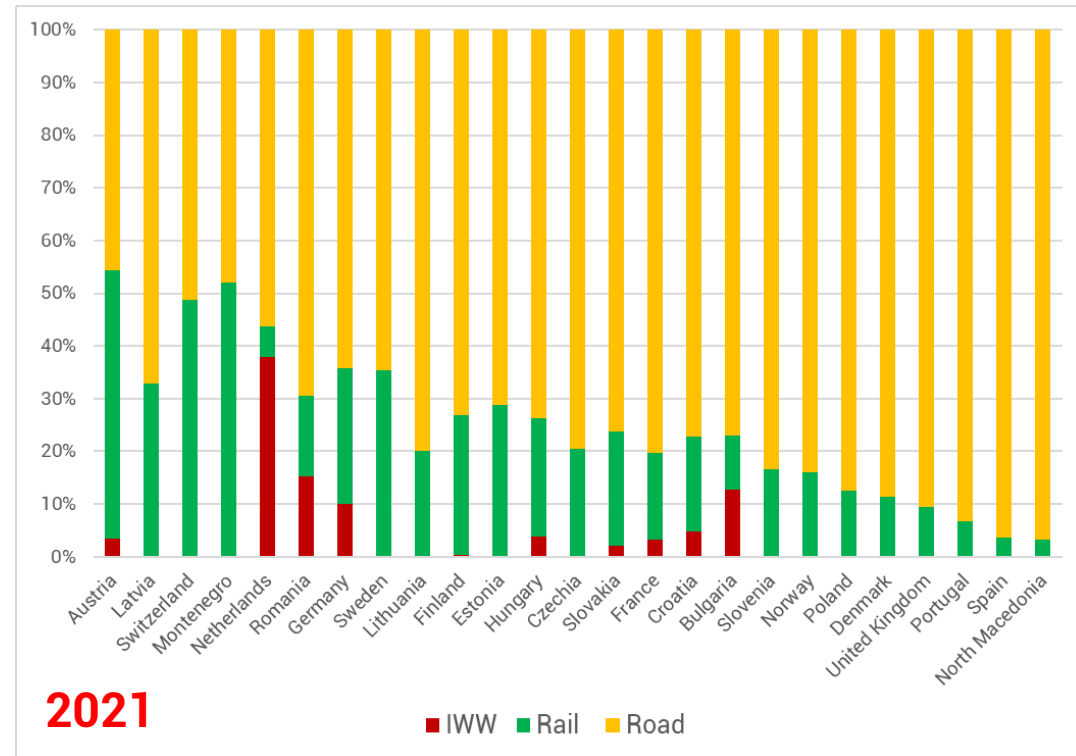
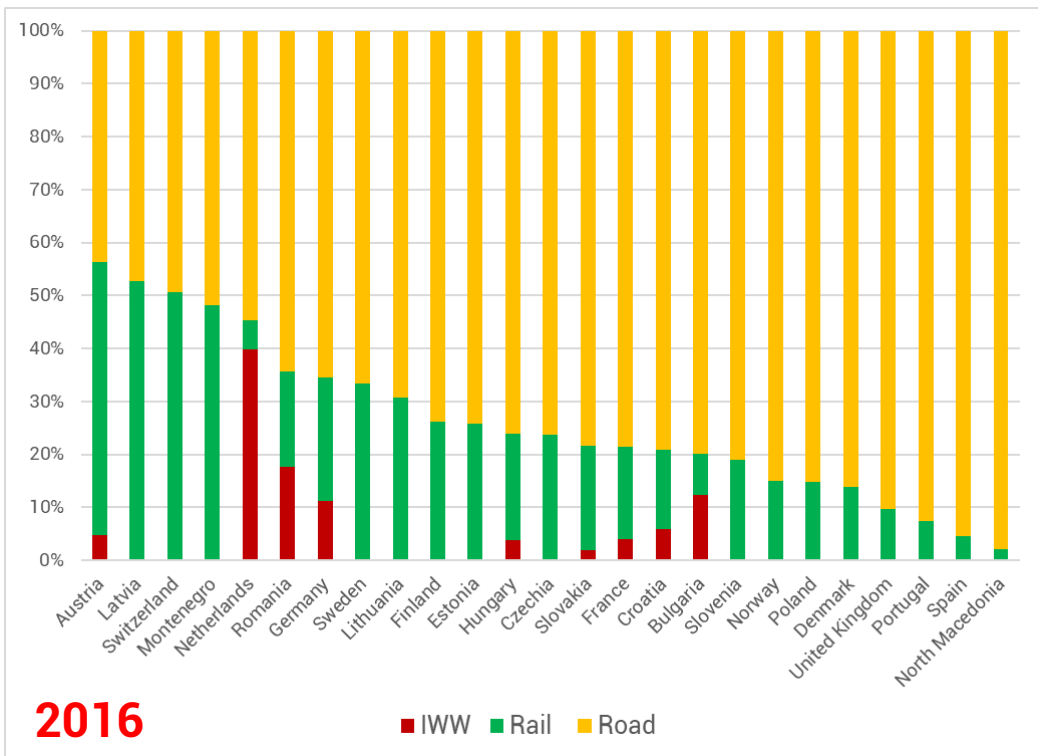


- Indicator **9.1.1**: proportion of rural population with access to an all-season road
- Data not collected by UNECE
- Limited data available on SDG Global Database (25 countries, one UNECE country)
- Reliance on academia?

2023 Release of SDG Indicators Data Sets, Center for International Earth Science Information Network – CIESIN – Columbia University



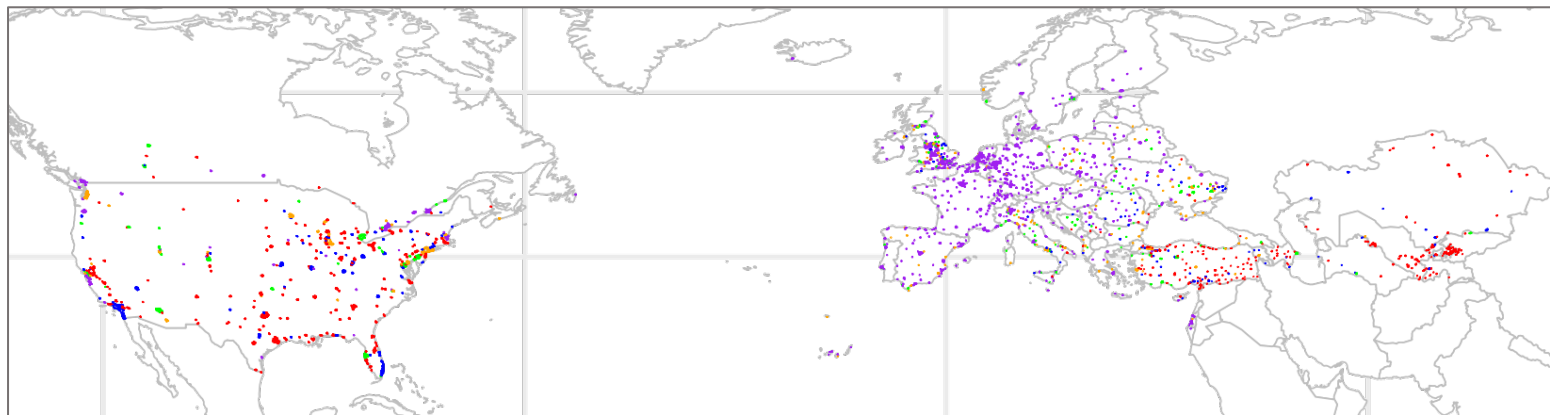
# Modal Split



- Indicator 9.1.2: passenger and freight volumes, by mode of transport
- Data collected through Common Questionnaire



# Access to Public Transport



category 0-20% 21-40% 41-60% 61-80% 81-100%

*Bubbles represent urban centres categorized by access to public transport*

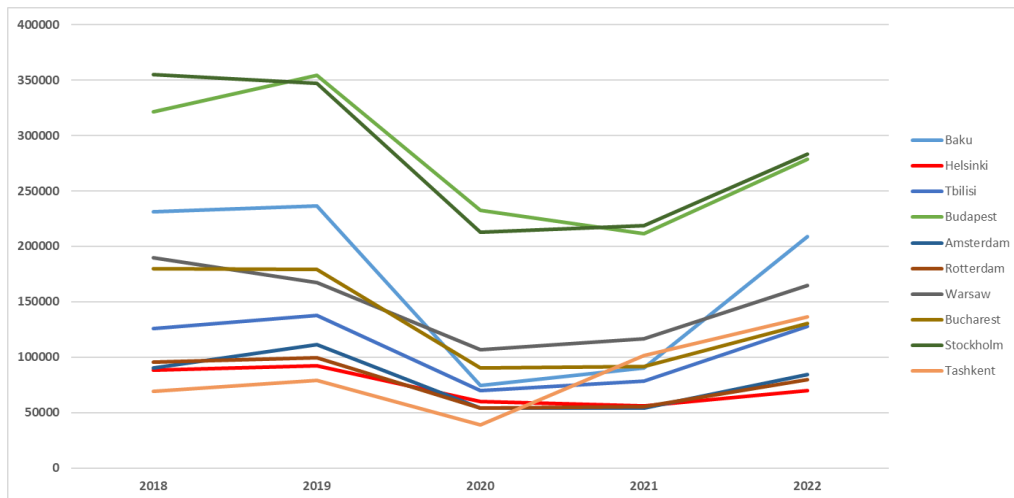
Source: Center for International Earth Science Information Network - CIESIN - Columbia University. 2023. SDG Indicator 11.2.1: Urban Access to Public Transport, 2023 Release. Palisades, New York: NASA Socioeconomic Data and Applications Center (SEDAC). <https://doi.org/10.7927/1a5z-3h71>. Accessed on 29 November 2023.

- Indicator **11.2.1**: proportion of population that has convenient access to public transport, by sex, age and persons with disabilities
- (Access)Data not collected by UNECE, but tram and metro data by city show public transport **use**

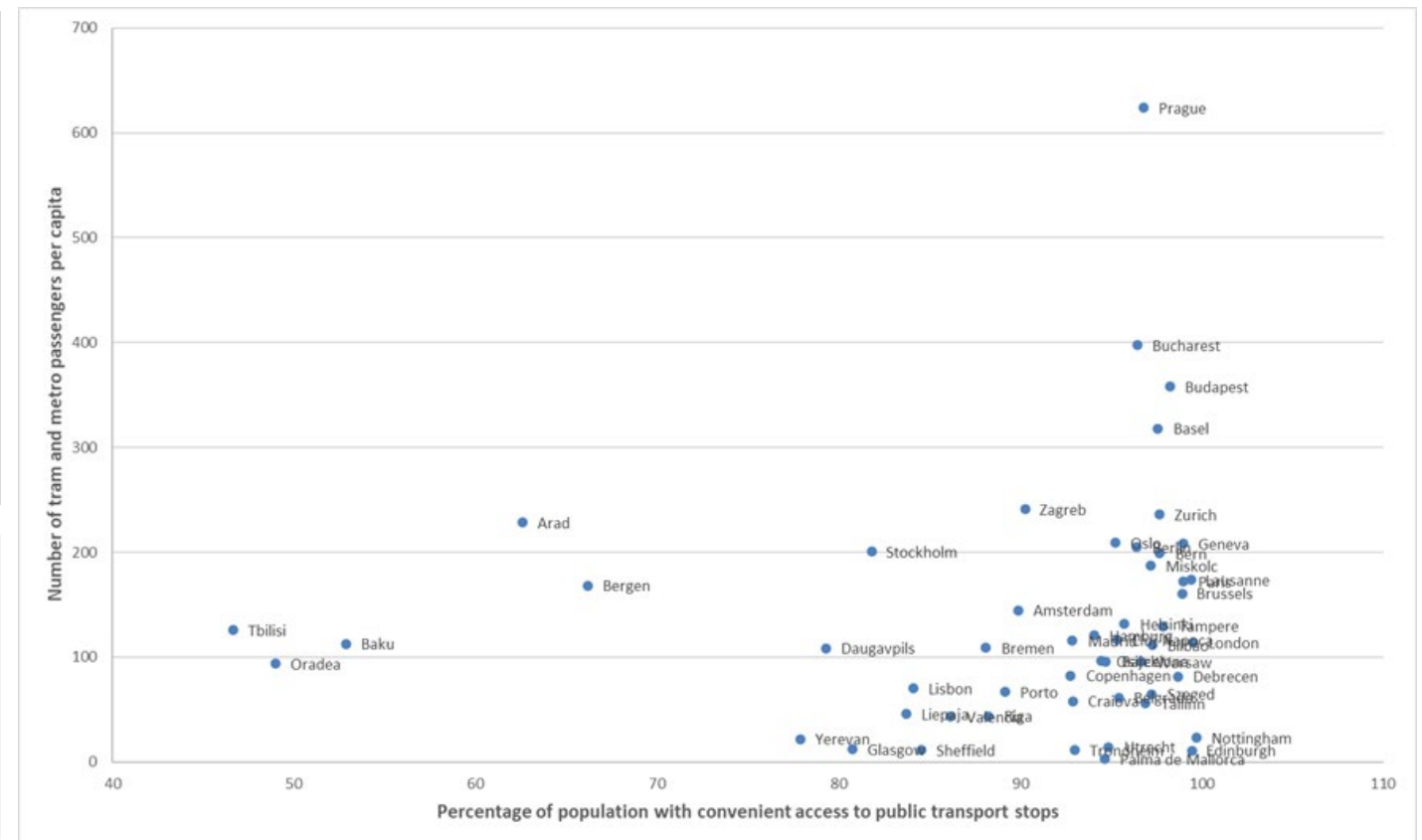


# Public Transport Use

Annual metro ridership in selected cities



Per capita public transport passengers vs population access, 2022



Most recent collection of tram and metro statistics:

- August – November 2023
- 162 cities, 29 member States

# Transport-Related Regional Indicators

Decided by the Working Party at the 74<sup>th</sup> session

**3** GOOD HEALTH AND WELL-BEING



Breakdown of road fatalities by type of road user

**11** SUSTAINABLE CITIES AND COMMUNITIES



**13** CLIMATE ACTION



Percentage of new passenger cars that are zero emissions

**13** CLIMATE ACTION



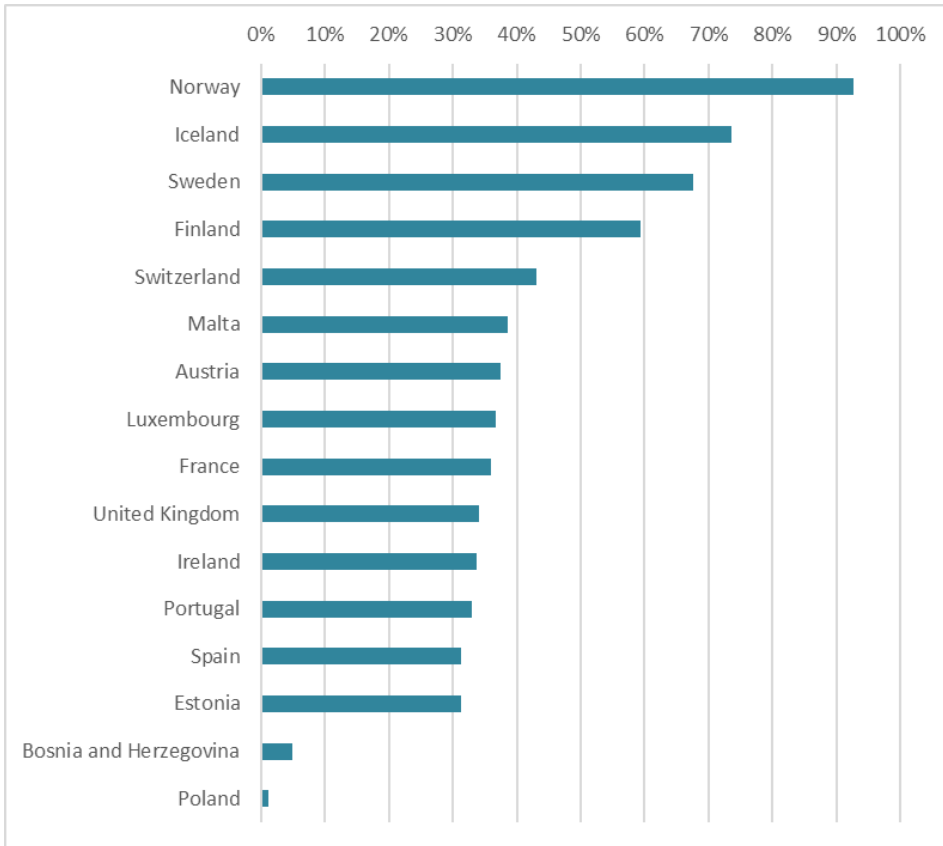
Trends in new passenger car vehicle weight





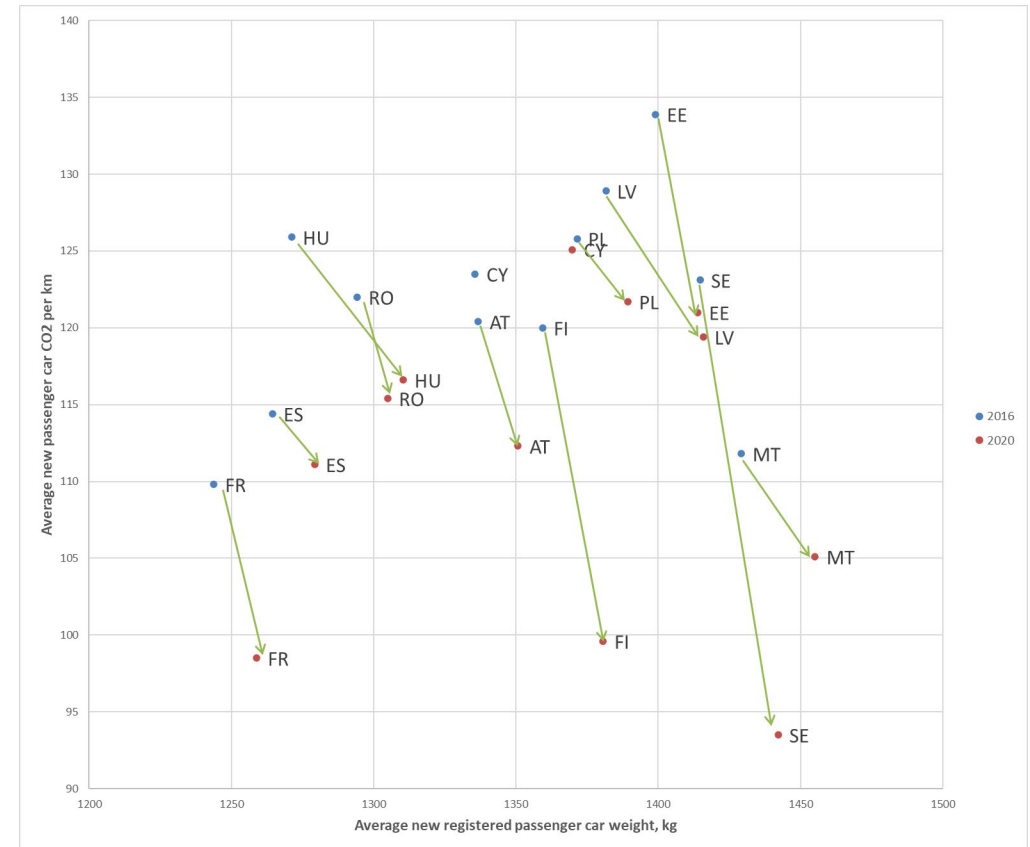
# New Passenger Cars

% New passenger car registrations (not fully petrol nor diesel), 2021



Source: UNECE Transport Database

New passenger car CO2 emissions vs average weights



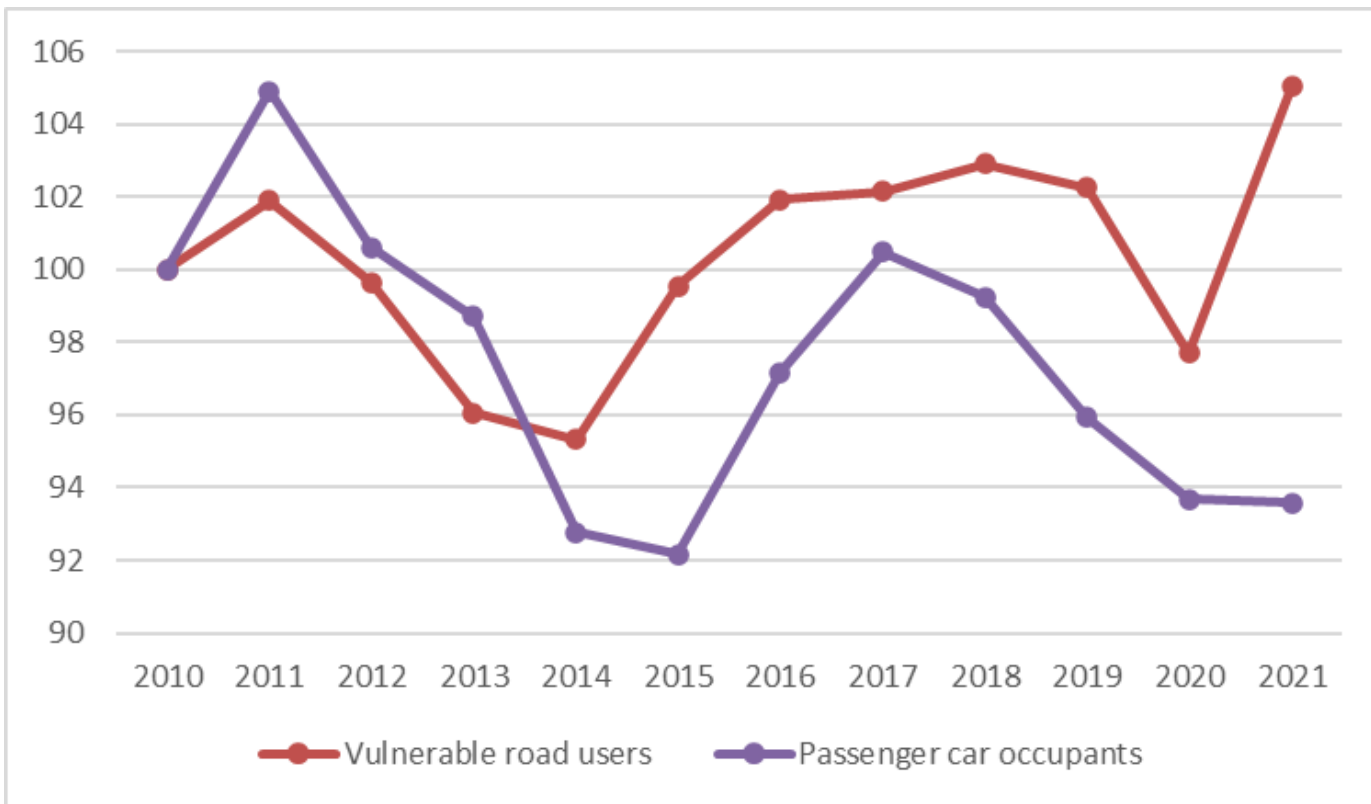
Source: Eurostat road\_eqr\_unlweig and sdg\_12\_30 tables



# Disaggregated Data by Type of Road User



## Index of fatalities, passenger car occupants vs VRUs



- Near-complete data availability and clear reference to transport safety
- Progress appears non-uniform between the two groups (data for 20 UNECE countries)
- Underreporting of VRU-related fatalities
- COVID-19 pandemic could increase VRU numbers

# Country-Specific Indicators

3 GOOD HEALTH AND WELL-BEING



% of population exposed to severe traffic nuisance and air pollution

9 INDUSTRY, INNOVATION AND INFRASTRUCTURE



% of GDP spent on transport infrastructure

Density of paved public roads

11 SUSTAINABLE CITIES AND COMMUNITIES



Independent use of public transport by persons with disabilities

Time lost due to traffic congestion and delays

Bicycle km per capita

13 CLIMATE ACTION



Final energy consumption in both goods and passenger transport

Share of non-motorized transport modes



## TAKING AMBITIOUS CLIMATE ACTION

Decarbonising  
inland transport  
by 2050



**UNECE**

# Thank you!

**Fadhah Achmadi**  
Secretary, WP.6

**UNECE**

Date 24 | 04 | 2024, Geneva